

REFERENCE PLAN OF EASEMENTS  
 OVER LOT 3, EXCEPT PLANS BCP 31381  
 AND BCP 32383, DISTRICT LOT 905,  
 CARIBOO DISTRICT, PLAN BCP22524.

PLAN NO. BCP 32385

Deposited in the Land Title Office at New  
 Westminster this 10 day of SEPT 2007.

Pursuant to Section 99(1)(e)  
 of the Land Title Act.

B.C.G.S. 93G.087

Scale: 1 : 750 (Distances are in metres)

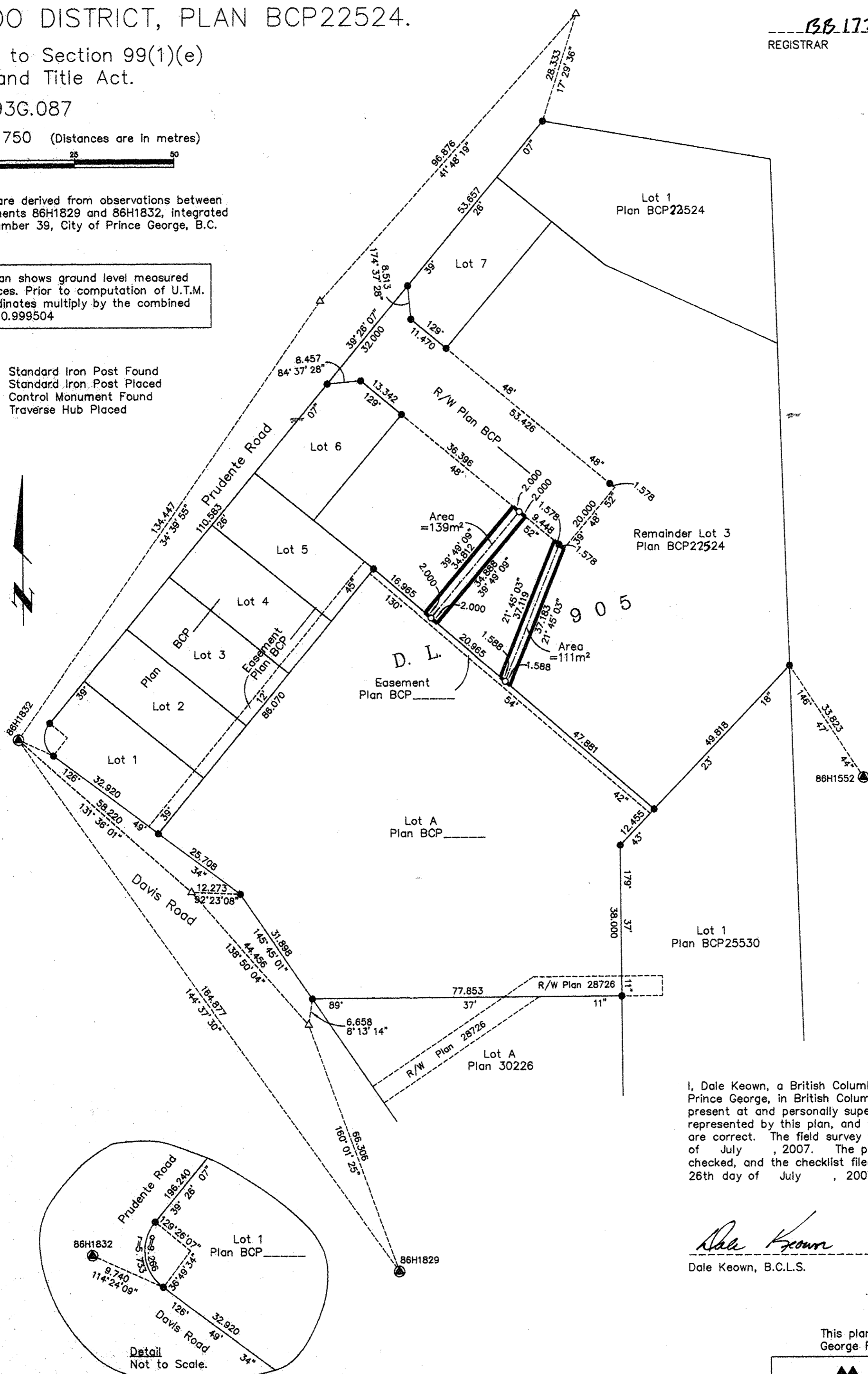


Grid bearings are derived from observations between  
 control monuments 86H1829 and 86H1832, integrated  
 survey area number 39, City of Prince George, B.C.  
 NAD83(CSRS)

Note: This plan shows ground level measured  
 distances. Prior to computation of U.T.M.  
 co-ordinates multiply by the combined  
 factor 0.999504

LEGEND

- Standard Iron Post Found
- Standard Iron Post Placed
- ⊙ Control Monument Found
- △ Traverse Hub Placed



I, Dale Keown, a British Columbia Land Surveyor, of  
 Prince George, in British Columbia, certify that I was  
 present at and personally superintended the survey  
 represented by this plan, and that the survey and plan  
 are correct. The field survey was completed on the 25th day  
 of July, 2007. The plan was completed and  
 checked, and the checklist filed under #68076, on the  
 26th day of July, 2007.

*Dale Keown*  
 Dale Keown, B.C.L.S.

This plan lies within the Fraser-Fort  
 George Regional District.

**McElhanney**  
 McElhanney Associates  
 Land Surveying Ltd.  
 Prince George, B.C.  
 Ph: (250) 562-1196 Fax: 563-1941

F.B.-	D.L.- 905	File No. - 5389-1E2
-------	-----------	---------------------