

REFERENCE PLAN OF STATUTORY  
RIGHT OF WAY THROUGH LOT 3,  
EXCEPT PLANS BCP 31387 AND  
BCP 32383, DISTRICT LOT 905,  
CARIBOO DISTRICT, PLAN BCP22524.

PLAN NO. BCP 32384

Deposited in the Land Title Office at New  
Westminster this 10 day of SEPT 2007.

BB 172200

REGISTRAR

Pursuant to Section 113  
of the Land Title Act.

B.C.G.S. 93G.087

Scale: 1 : 750 (Distances are in metres)

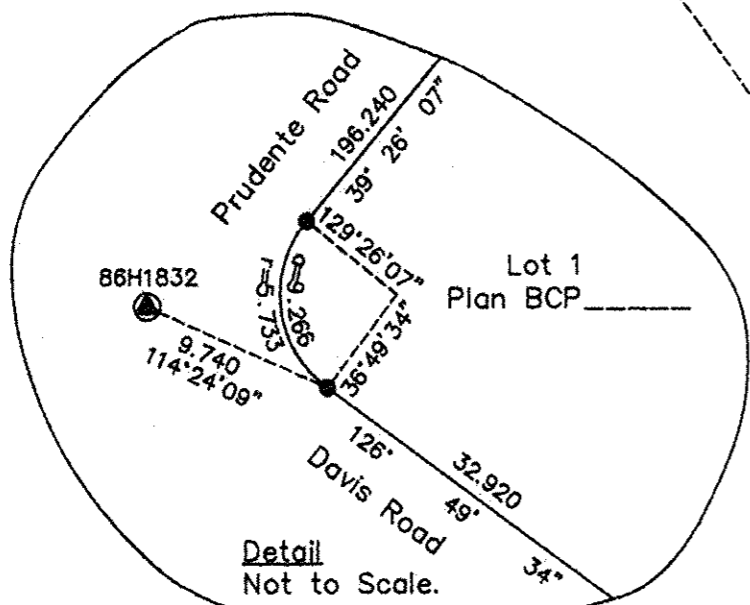
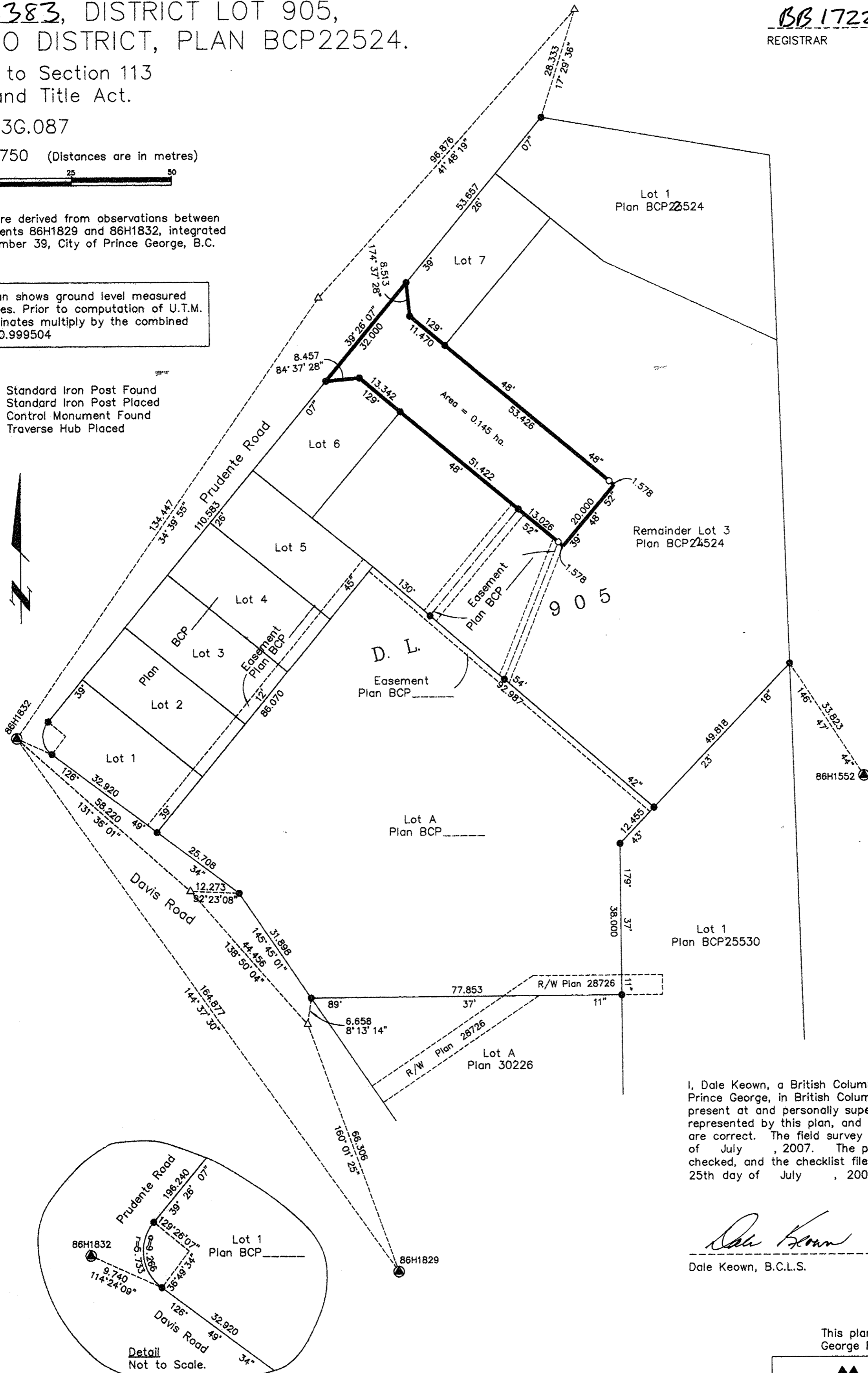


Grid bearings are derived from observations between  
control monuments 86H1829 and 86H1832, integrated  
survey area number 39, City of Prince George, B.C.  
NAD83(CSRS)

Note: This plan shows ground level measured  
distances. Prior to computation of U.T.M.  
co-ordinates multiply by the combined  
factor 0.999504

LEGEND

- Standard Iron Post Found
- Standard Iron Post Placed
- ⊙ Control Monument Found
- △ Traverse Hub Placed



I, Dale Keown, a British Columbia Land Surveyor, of  
Prince George, in British Columbia, certify that I was  
present at and personally superintended the survey  
represented by this plan, and that the survey and plan  
are correct. The field survey was completed on the 25th day  
of July, 2007. The plan was completed and  
checked, and the checklist filed under #67996, on the  
25th day of July, 2007.

*Dale Keown*  
Dale Keown, B.C.L.S.

This plan lies within the Fraser-Fort  
George Regional District.

**McElhanney**  
McElhanney Associates  
Land Surveying Ltd.  
Prince George, B.C.  
Ph: (250) 562-1196 Fax: 563-1941

F.B.-	D.L.- 905	File No. - 5389-1RW
-------	-----------	---------------------