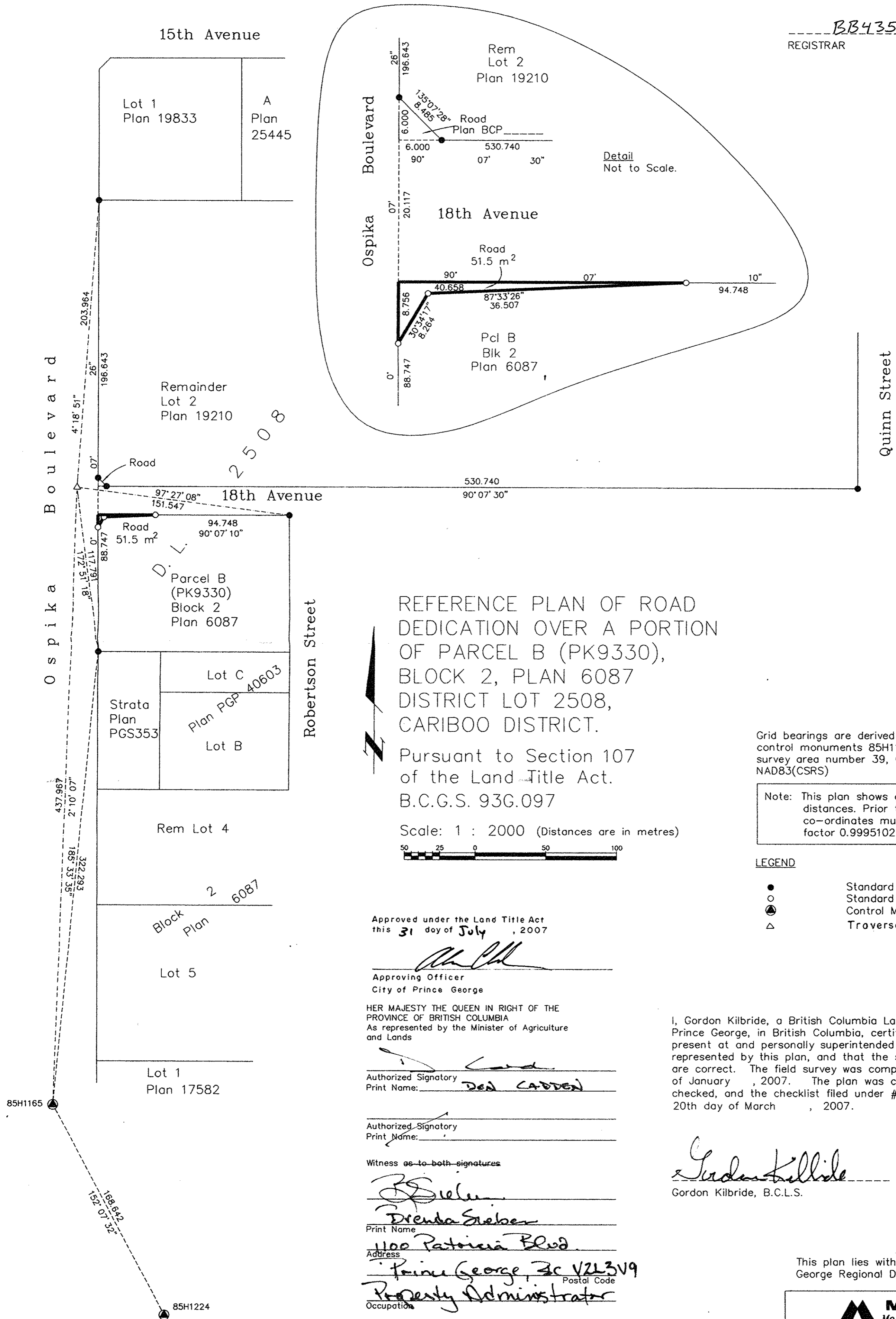


Deposited in the Land Title Office at New Westminster this 2ND day of AUGUST 2007.

BB435080
REGISTRAR



REFERENCE PLAN OF ROAD DEDICATION OVER A PORTION OF PARCEL B (PK9330), BLOCK 2, PLAN 6087 DISTRICT LOT 2508, CARIBOO DISTRICT.

Pursuant to Section 107 of the Land Title Act. B.C.G.S. 93G.097

Scale: 1 : 2000 (Distances are in metres)



Grid bearings are derived from observations between control monuments 85H1165 and 85H1224, integrated survey area number 39, City of Prince George, B.C. NAD83(CSRS)

Note: This plan shows ground level measured distances. Prior to computation of U.T.M. co-ordinates multiply by the combined factor 0.9995102

LEGEND

- Standard Iron Post Found
- Standard Iron Post Placed
- ⊙ Control Monument Found
- △ Traverse Hub

Approved under the Land Title Act this 31 day of July, 2007

Approving Officer
City of Prince George

HER MAJESTY THE QUEEN IN RIGHT OF THE PROVINCE OF BRITISH COLUMBIA
As represented by the Minister of Agriculture and Lands

Authorized Signatory
Print Name: Don Cadden

Authorized Signatory
Print Name:

Witness as to both signatures

Drenda Sieber
Print Name

1100 Patricia Blvd
Address
Prince George, BC V2L3V9
Postal Code

Property Administrator
Occupation

I, Gordon Kilbride, a British Columbia Land Surveyor, of Prince George, in British Columbia, certify that I was present at and personally superintended the survey represented by this plan, and that the survey and plan are correct. The field survey was completed on the 17th day of January, 2007. The plan was completed and checked, and the checklist filed under #62095, on the 20th day of March, 2007.

Gordon Kilbride
Gordon Kilbride, B.C.L.S.

This plan lies within the Fraser-Fort George Regional District.

McElhanney
McElhanney Associates
Land Surveying Ltd.
Prince George, B.C.

Ph: (250) 561-1196 Fax: 563-1941

F.B.- D.L.- 2508 File No. - 5460