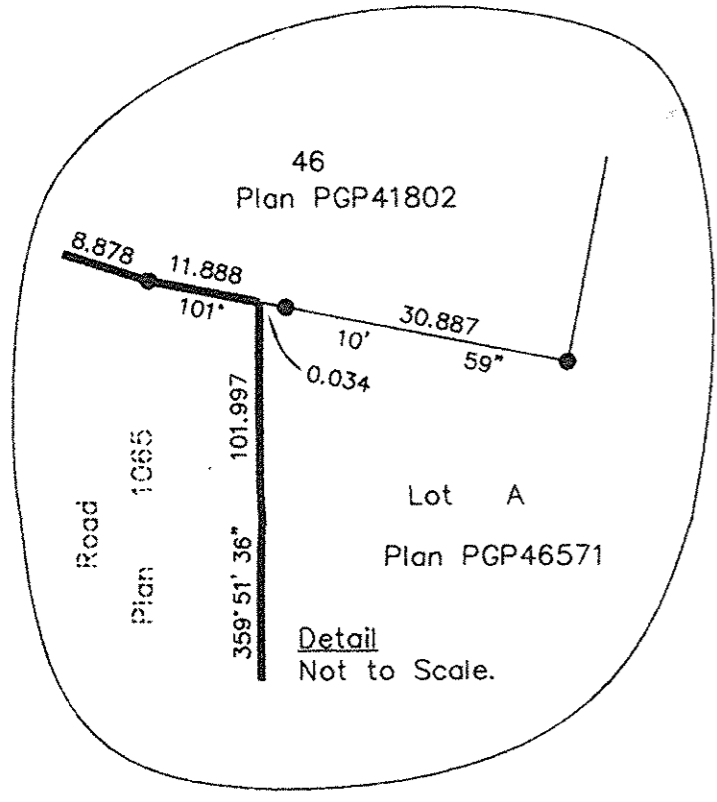
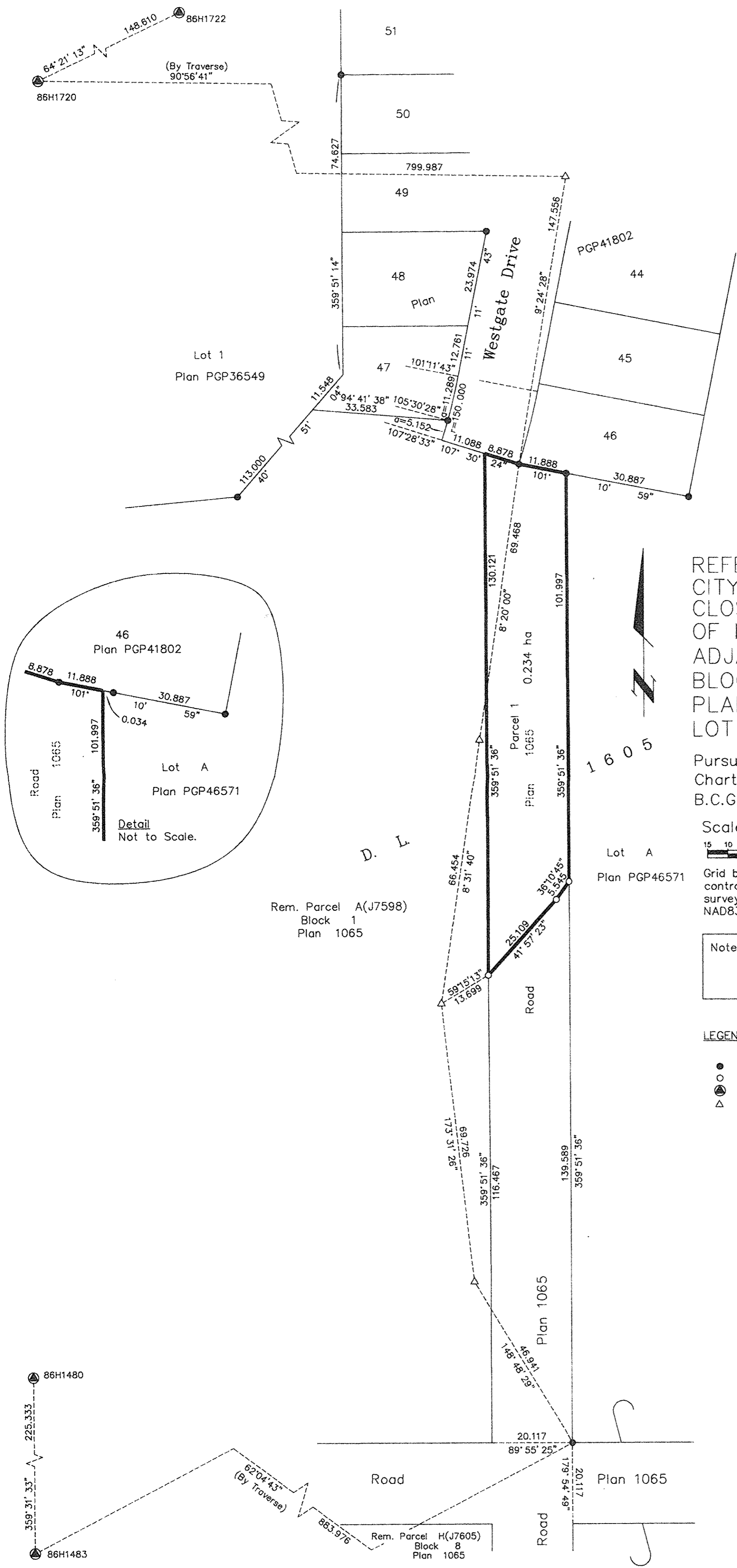


Deposited in the Land Title Office at New Westminster this 10 day of July 2007

REGISTRAR

REF. # BB 529812



REFERENCE PLAN TO ACCOMPANY CITY OF PRINCE GEORGE ROAD CLOSURE BYLAW 7838 AND REMOVAL OF HIGHWAY DEDICATION BY PLAN 1065 ADJACENT TO PARCEL A (J7598) BLOCK 1, PLAN 1065, AND LOT A, PLAN PGP46571, ALL DISTRICT LOT 1605, CARIBOO DISTRICT.

Pursuant to Section 40 of the Community Charter and Section 120 of the Land Title Act. B.C.G.S. 93G.086

Scale: 1 : 750 (Distances are in metres)



Grid bearings are derived from observations between control monuments 86H1720 and 86H1722, integrated survey area number 39, City of Prince George, B.C. NAD83(CSRS)

Note: This plan shows ground level measured distances. Prior to computation of U.T.M. co-ordinates multiply by the combined factor 0.9994885

LEGEND

- Standard Iron Post Found
- Standard Iron Post Placed
- ⊙ Control Monument Found
- △ Traverse Hub Placed

I, Dale Keown, a British Columbia Land Surveyor, of Prince George, in British Columbia, certify that I was present at and personally superintended the survey represented by this plan, and that the survey and plan are correct. The field survey was completed on the 16th day of May, 2006. The plan was completed and checked, and the checklist filed under # 48644, on the 17th day of May, 2006.

*Dale Keown*  
Dale Keown, B.C.L.S.

This plan lies within the Fraser-Fort George Regional District.

**McElhannoy**  
McElhannoy Associates  
Land Surveying Ltd.  
Prince George, B.C.

Ph: (250) 562-1196 Fax: 562-3656

F.B.- RA    D.L.- 1605    File No.- 05265-0BL