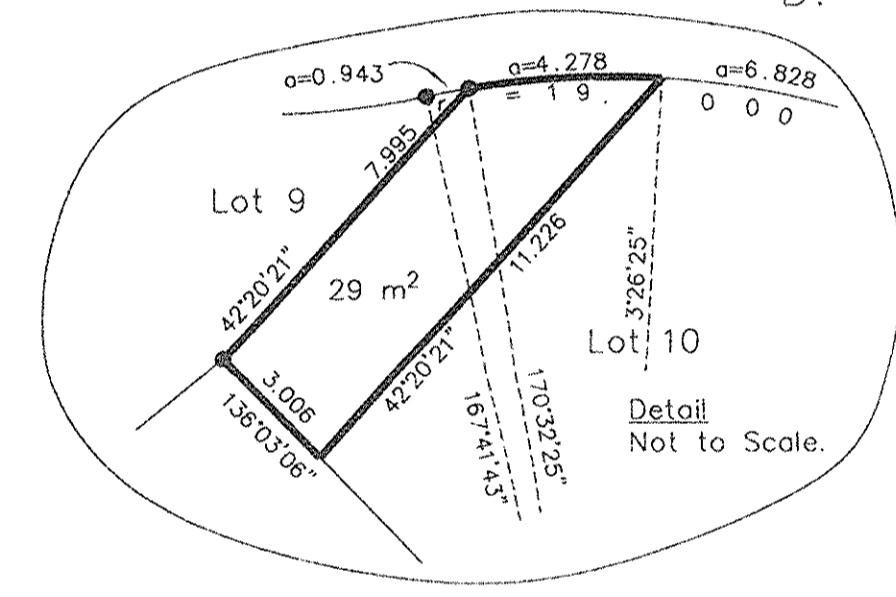


Deposited in the Land Title Office at New Westminster this 16 day of July 2007.

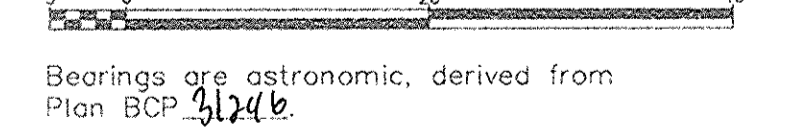
REGISTRAR *GB42760A*



REFERENCE PLAN OF EASEMENT OVER PORTIONS OF LOTS 1-2, 4, 10, 19-21, 24-26, 29-30 AND 33-37, PLAN BCP 31246 DISTRICT LOT 2003, CARIBOO DISTRICT.

Pursuant to Section 99(1)(e) of the Land Title Act. B.C.G.S. 93G.087

Scale: 1 : 500 (Distances are in metres)



Bearings are astronomic, derived from Plan BCP 31246.

LEGEND

● Standard Iron Post Found

BOOK OF REFERENCE	
DESCRIPTION	AREA
Lot 1, D.L. 2003, Cariboo District, Plan BCP 31246	2.6 m ²
Lot 2, D.L. 2003, Cariboo District, Plan BCP 31246	56 m ²
Lot 4, D.L. 2003, Cariboo District, Plan BCP 31246	69 m ²
Lot 10, D.L. 2003, Cariboo District, Plan BCP 31246	29 m ²
Lot 19, D.L. 2003, Cariboo District, Plan BCP 31246	57 m ²
Lot 20, D.L. 2003, Cariboo District, Plan BCP 31246	103m ²
Lot 21, D.L. 2003, Cariboo District, Plan BCP 31246	19 m ²
Lot 24, D.L. 2003, Cariboo District, Plan BCP 31246	29 m ²
Lot 25, D.L. 2003, Cariboo District, Plan BCP 31246	44 m ²
Lot 26, D.L. 2003, Cariboo District, Plan BCP 31246	30 m ²
Lot 29, D.L. 2003, Cariboo District, Plan BCP 31246	60 m ²
Lot 30, D.L. 2003, Cariboo District, Plan BCP 31246	43 m ²
Lot 33, D.L. 2003, Cariboo District, Plan BCP 31246	62 m ²
Lot 34, D.L. 2003, Cariboo District, Plan BCP 31246	134m ²
Lot 35, D.L. 2003, Cariboo District, Plan BCP 31246	68 m ²
Lot 36, D.L. 2003, Cariboo District, Plan BCP 31246	66 m ²
Lot 37, D.L. 2003, Cariboo District, Plan BCP 31246	103m ²

I, Dale Keown, a British Columbia Land Surveyor, of Prince George, in British Columbia, certify that I was present at and personally supervised the survey represented by this plan, and that the survey and plan are correct. The field survey was completed on the 30th day of October, 2006. The plan was completed and checked, and the checklist filed under #56502, on the 30th day of October, 2006.

Dale Keown
Dale Keown, B.C.L.S.

This plan lies within the Fraser-Fort George Regional District.

McElhanney
McElhanney Associates
Land Surveying Ltd.
Prince George, B.C.
Ph: (250) 561-2229 Fax: 563-1941