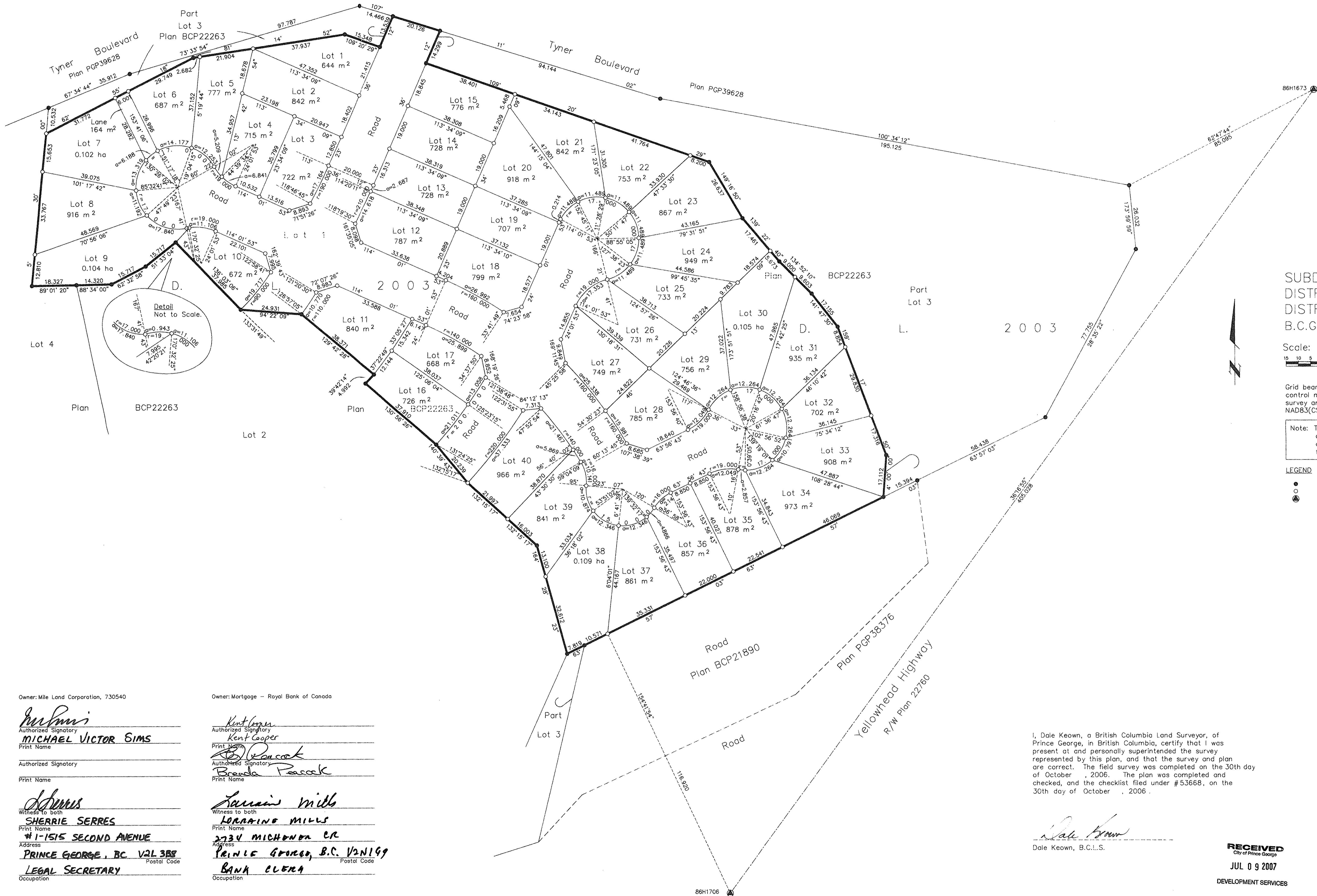


Deposited in the Land Title Office at New Westminster this 16 day of July 2007.

REGISTRAR

B13427128



SUBDIVISION PLAN OF LOT 1,
DISTRICT LOT 2003, CARIBOO
DISTRICT, PLAN BCP22263
B.C.G.S. 93G.087

Scale: 1 : 750 (Distances are in metres)



Grid bearings are derived from observations between control monuments 86H1673 and 86H1706, integrated survey area number 39, City of Prince George, B.C. NAD83(CSRS)

Note: This plan shows ground level measured distances. Prior to computation of U.T.M. co-ordinates multiply by the combined factor 0.9995006

LEGEND

- Standard Iron Post Found
- Standard Iron Post Placed
- ⊙ Control Monument Found

Owner: Mile Land Corporation, 730540

Owner: Mortgage - Royal Bank of Canada

Michael Victor Sims
Authorized Signatory
MICHAEL VICTOR SIMS
Print Name

Kent Cooper
Authorized Signatory
Kent Cooper
Print Name

Authorized Signatory
Print Name

Brenda Pasack
Authorized Signatory
Brenda Pasack
Print Name

Sherrie Serres
Witness to both
SHERRIE SERRES
Print Name
#1-1515 SECOND AVENUE
PRINCE GEORGE, BC V2L 3B8
LEGAL SECRETARY
Occupation

Lorraine Mills
Witness to both
LORRAINE MILLS
Print Name
2734 MICHONDA CR
PRINCE GEORGE, B.C. V2N 1G9
BANK CLERK
Occupation

Approved under the Land Title Act this 14 day of July 2007

[Signature]
Approving Officer
Ministry of Transportation

File No. 03-014-16719

Approved under the Land Title Act this 11 day of July 2007

[Signature]
Approving Officer
City of Prince George

I, Dale Keown, a British Columbia Land Surveyor, of Prince George, in British Columbia, certify that I was present at and personally superintended the survey represented by this plan, and that the survey and plan are correct. The field survey was completed on the 30th day of October, 2006. The plan was completed and checked, and the checklist filed under #53668, on the 30th day of October, 2006.

Dale Keown
Dale Keown, B.C.L.S.

RECEIVED
City of Prince George
JUL 09 2007
DEVELOPMENT SERVICES

This plan lies within the Fraser-Fort George Regional District.

McElhanney
McElhanney Associates
Land Surveying Ltd.
Prince George, B.C.
Ph: (250) 561-2229 Fax: 563-1941
F.B.- RA D.L.- 2003 File No. -05363-0