

REFERENCE PLAN OF STATUTORY
RIGHT OF WAY OVER A PORTION OF
LOT 1, DISTRICT LOT 2507,
CARIBOO DISTRICT PLAN 32034,
EXCEPT PLAN BCP 30015.

Pursuant to Section 113
of the Land Title Act.
B.C.G.S. 93G.096

Note: This plan shows ground level measured
distances. Prior to computation of U.T.M.
co-ordinates multiply by the combined
factor 0.9995096

LEGEND

- ⊙ Standard Concrete Post Found
- Standard Iron Post Found
- ⊕ Control Monument Found

PLAN NO. BCP 30016

Deposited in the Land Title Office at New
Westminster this 15 day of MAY 2007

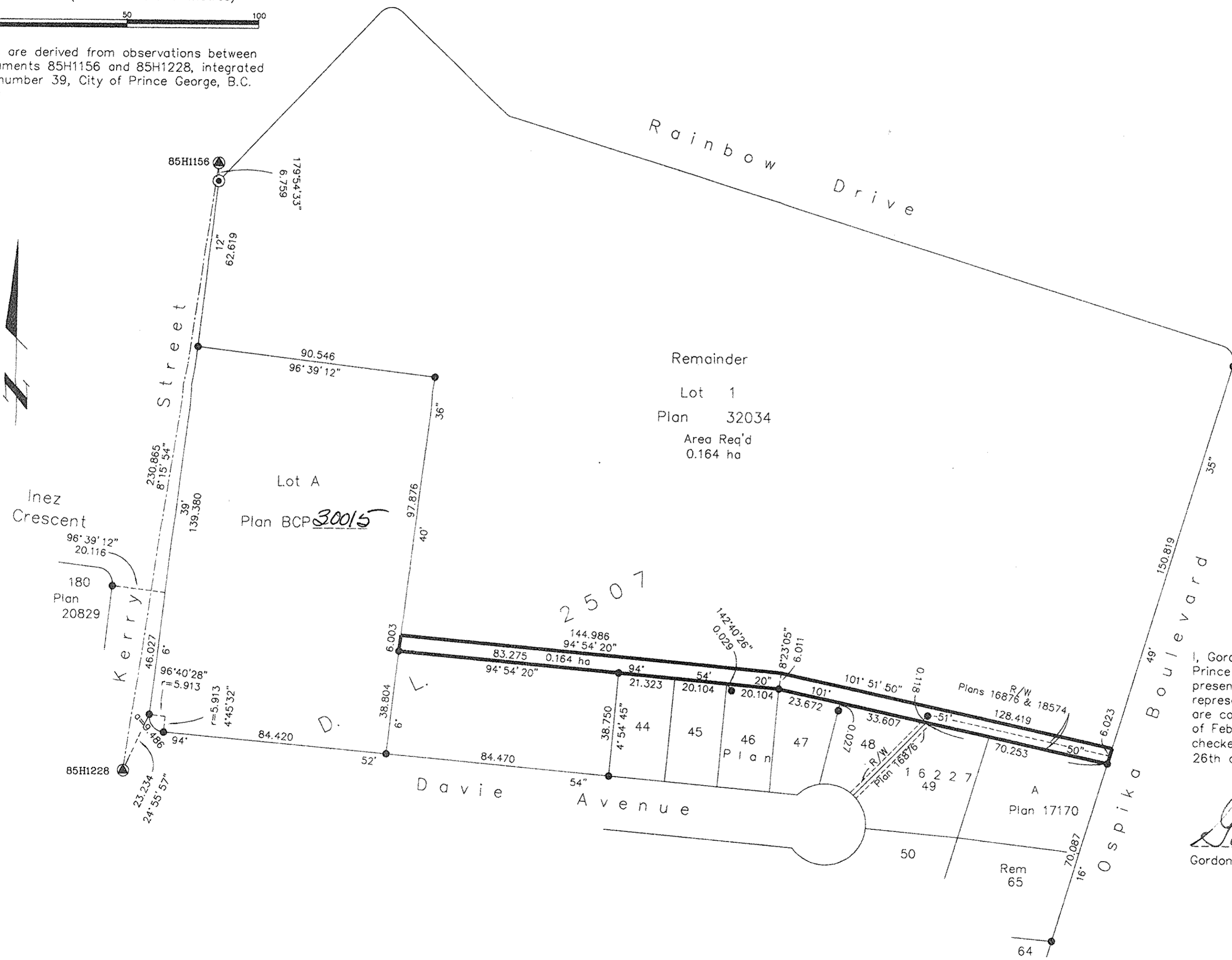
REGISTRAR

REF. # BB 501619

Scale: 1 : 1250 (Distances are in metres)



Grid bearings are derived from observations between
control monuments 85H1156 and 85H1228, integrated
survey area number 39, City of Prince George, B.C.
NAD83(CSRS)



I, Gordon Kilbride, a British Columbia Land Surveyor, of
Prince George, in British Columbia, certify that I was
present at and personally superintended the survey
represented by this plan, and that the survey and plan
are correct. The field survey was completed on the 16th day
of February, 2007. The plan was completed and
checked, and the checklist filed under #61187, on the
26th day of February, 2007.

Gordon Kilbride
Gordon Kilbride, B.C.L.S.

This plan lies within the Fraser-Fort
George Regional District.

McElhanney
McElhanney Associates
Land Surveying Ltd.
Prince George, B.C.
Ph: (250) 562-1196 Fax: 563-1941

F.B.- RA	D.L.- 2507	File No. - 5479-RW
----------	------------	--------------------