

SUBDIVISION PLAN OF PART OF
 LOT 1, DISTRICT LOT 2507,
 CARIBOO DISTRICT, PLAN 32034.
 B.C.G.S. 93G.096

Note: This plan shows ground level measured distances. Prior to computation of U.T.M. co-ordinates multiply by the combined factor 0.9995096

PLAN NO. BCP 30015

Deposited in the Land Title Office at New Westminster this 15 day of MAY 2007

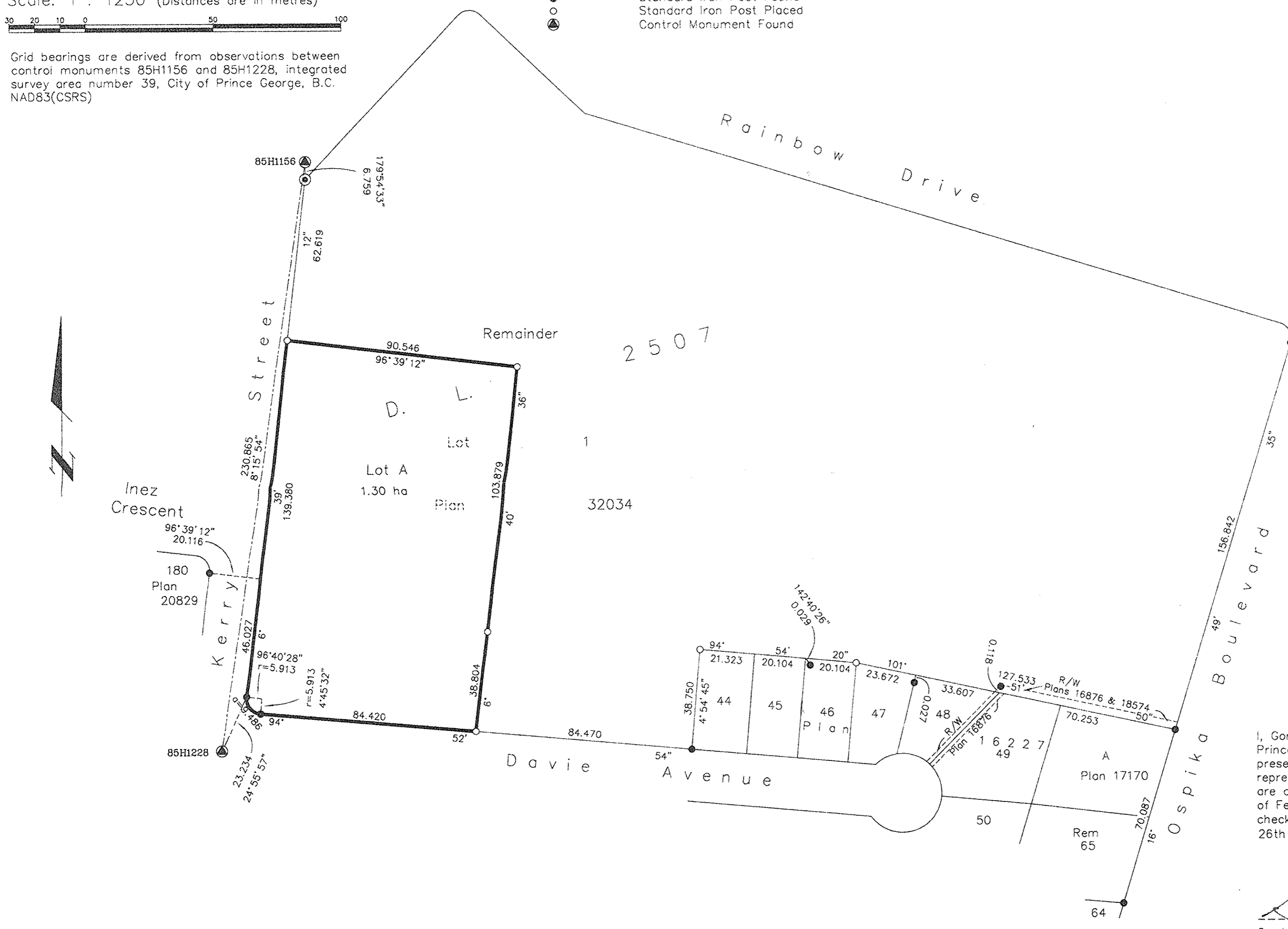
Scale: 1 : 1250 (Distances are in metres)



Grid bearings are derived from observations between control monuments 85H1156 and 85H1228, integrated survey area number 39, City of Prince George, B.C. NAD83(CSRS)

- LEGEND
- ⊙ Standard Concrete Post Found
 - Standard Iron Post Found
 - Standard Iron Post Placed
 - ⊕ Control Monument Found

REGISTRAR
 REF. # BB 501615



I, Gordon Kilbride, a British Columbia Land Surveyor, of Prince George, in British Columbia, certify that I was present at and personally superintended the survey represented by this plan, and that the survey and plan are correct. The field survey was completed on the 16th day of February, 2007. The plan was completed and checked, and the checklist filed under #61185, on the 26th day of February, 2007.

Gordon Kilbride
 Gordon Kilbride, B.C.L.S.

Owner: Board of School Trustees of School District No 57 (Prince George)

Authorized Signatory
Bryan Mix
 Print Name
 Bryan Mix
 Authorized Signatory
 Print Name

Witness to both
W. Babicz
 Print Name
 Walter Babicz
 Address
 1000 - 299 Victoria St.
 Prince George, B.C. V2L 5B8
 Postal Code
 Lawyer
 Occupation

Approved under the Land Title Act this 17 day of April, 2007
[Signature]
 Approving Officer
 City of Prince George

This plan lies within the Fraser-Fort George Regional District.

McElhanney
 McElhanney Associates
 Land Surveying Ltd.
 Prince George, B.C.
 Ph: (250) 562-1196 Fax: 563-1941

F.B.- RA	D.L.- 2507	File No. - 5479
----------	------------	-----------------