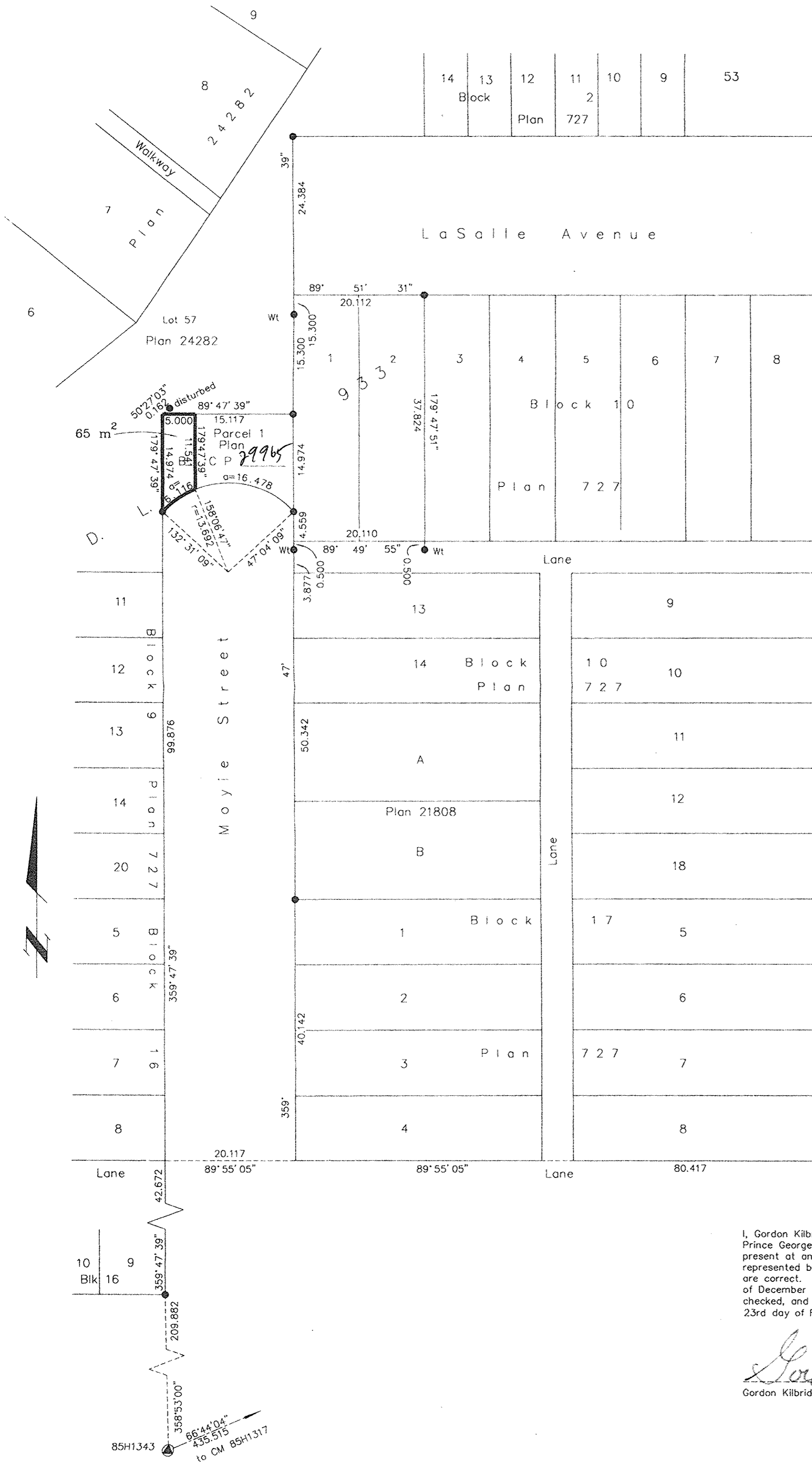


Deposited in the Land Title Office at New Westminster this 10 day of May 2007

REGISTRAR

BB500244

Pcl 1  
Plan PGP45386



REFERENCE PLAN OF STATUTORY RIGHT OF WAY OVER A PORTION OF PARCEL 1 (BYLAW PLAN BCP 29965), DEDICATED ROAD ON PLAN 727, DISTRICT LOT 933, CARIBOO DISTRICT.

Pursuant to Section 113 of the Land Title Act.

B.C.G.S. 93G.087

Scale: 1 : 500 (Distances are in metres)



Liloeet Street

Grid bearings are derived from observations between control monuments 85H1343 and 85H1317, integrated survey area number 39, City of Prince George, B.C. NAD83(CSRS)

Note: This plan shows ground level measured distances. Prior to computation of U.T.M. co-ordinates multiply by the combined factor 0.9995140

LEGEND

- Standard Iron Post Found
- ▲ Control Monument Found

I, Gordon Kilbride, a British Columbia Land Surveyor, of Prince George, in British Columbia, certify that I was present at and personally supervised the survey represented by this plan, and that the survey and plan are correct. The field survey was completed on the 8th day of December, 2006. The plan was completed and checked, and the checklist filed under #61140, on the 23rd day of February, 2007.

*Gordon Kilbride*  
Gordon Kilbride, B.C.L.S.

This plan lies within the Fraser-Fort George Regional District.

**McElhanney**  
McElhanney Associates  
Land Surveying Ltd.  
Prince George, B.C.

Ph: (250) 561-2229 Fax: 563-1941

F.B.- XF 48 | D.L.- 933 | File No. - 5282-C