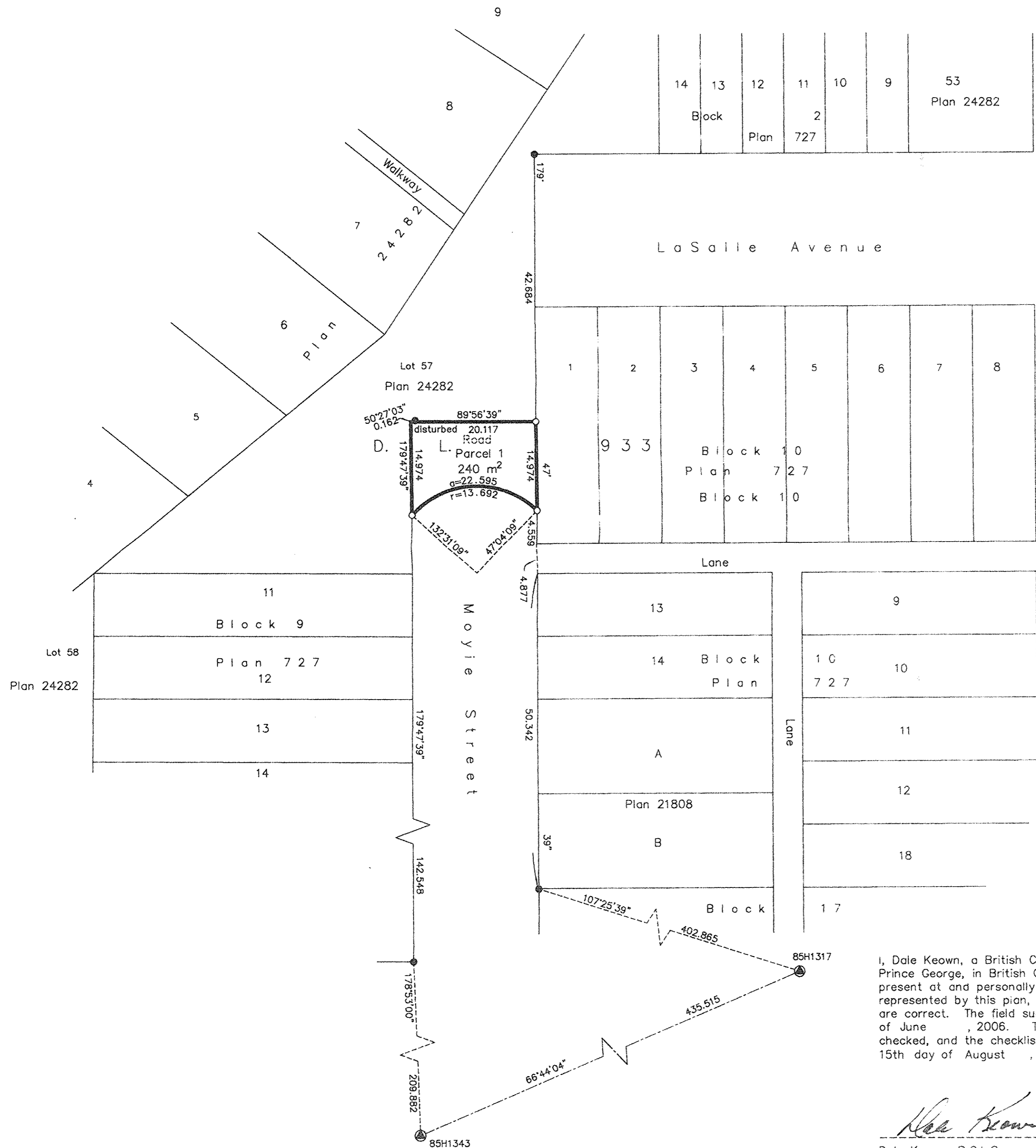


Deposited in the Land Title Office at New Westminster this 10 day of May 2007.

REGISTRAR

B13500239



REFERENCE PLAN TO ACCOMPANY CITY OF PRINCE GEORGE HIGHWAY CLOSURE AND REMOVAL OF HIGHWAY DEDICATION BYLAW 7814, OVER A PORTION OF ROAD DEDICATED BY PLAN 727, ADJACENT TO LOT 1, BLOCK 10, PLAN 727, ALL IN DISTRICT LOT 933, CARIBOO DISTRICT.

Pursuant to Section 40 of the Community Charter and Section 120 of the Land Title Act. B.C.G.S. 93G.087

Scale: 1 : 500 (Distances are in metres)



Grid bearings are derived from observations between control monuments 85H1343 and 85H1317, integrated survey area number 39, City of Prince George, B.C. NAD83(CSRS)

Note: This plan shows ground level measured distances. Prior to computation of U.T.M. co-ordinates multiply by the combined factor 0.9995140

LEGEND

- Standard Iron Post Found
- Standard Iron Post Placed
- ⊙ Control Monument Found

I, Dale Keown, a British Columbia Land Surveyor, of Prince George, in British Columbia, certify that I was present at and personally superintended the survey represented by this plan, and that the survey and plan are correct. The field survey was completed on the 7th day of June, 2006. The plan was completed and checked, and the checklist filed under #52762, on the 15th day of August, 2006.

*Dale Keown*  
Dale Keown, B.C.L.S.

This plan lies within the Fraser-Fort George Regional District.

**McElhanney**  
McElhanney Associates  
Land Surveying Ltd.  
Prince George, B.C.  
Ph: (250) 562-1196 Fax: 563-1941

F.B.- XF48	D.L.- 933	File No. - 5282-A
------------	-----------	-------------------