

EXPLANATORY PLAN OF EASEMENT
 OVER A PORTION OF PARCELS A
 AND B (PLAN BCP10773) OF PART
 PARCEL 1, DISTRICT LOTS 745 AND 747,
 CARIBOO DISTRICT, PLAN 34384 AS
 SHOWN ON PLAN PGP35183.

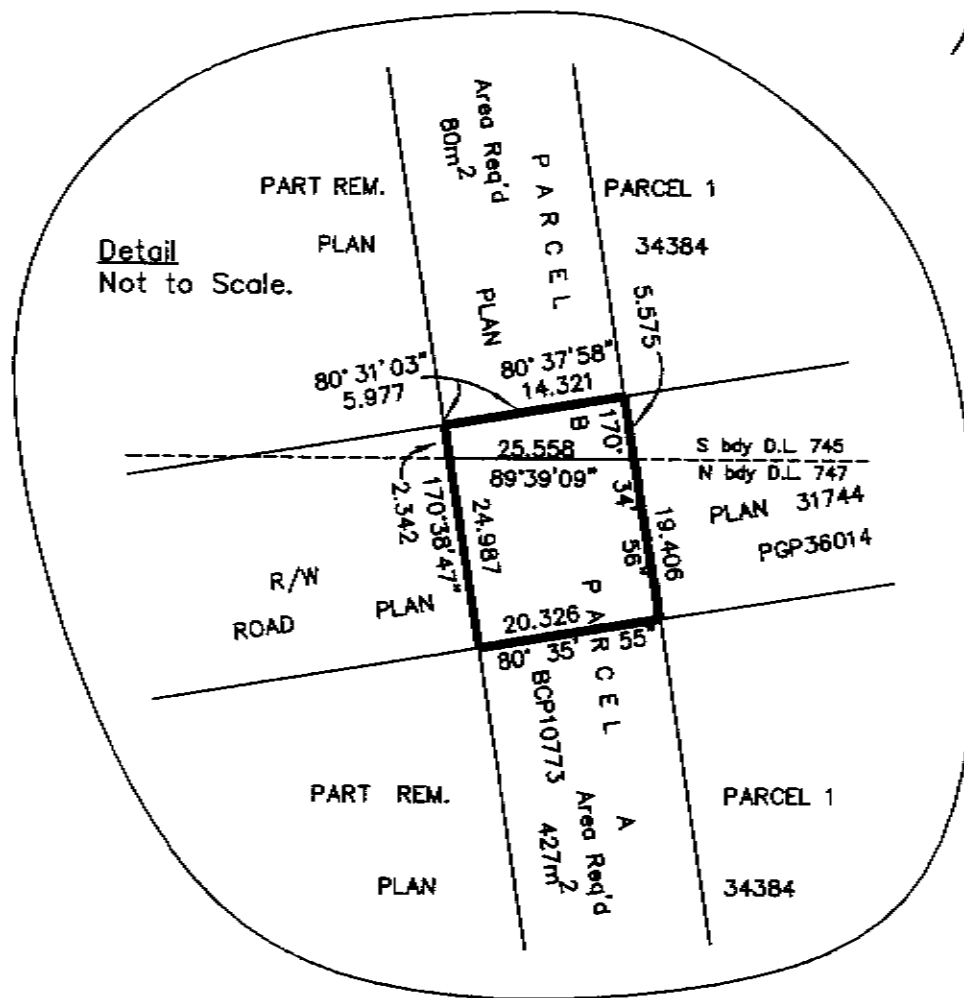
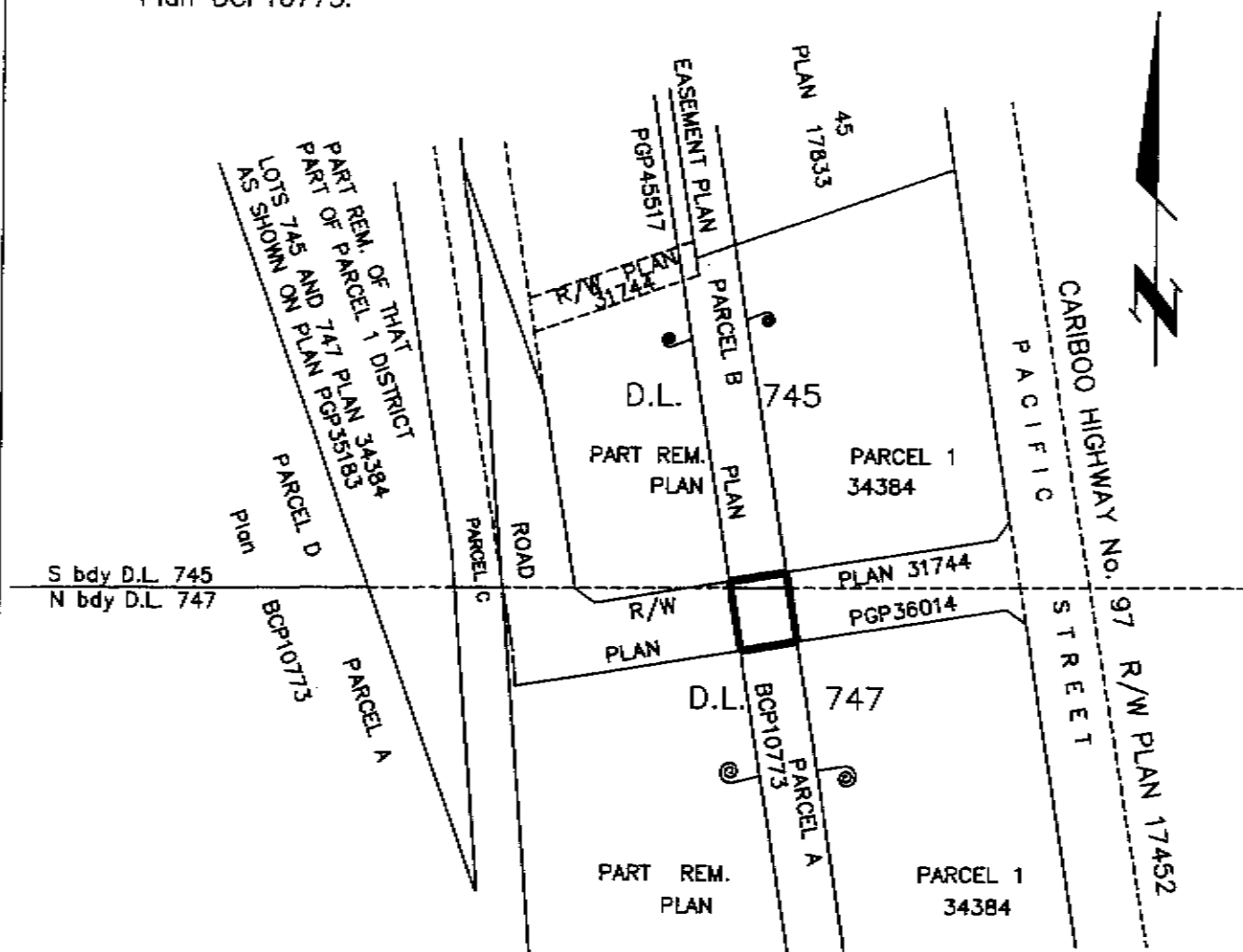
Pursuant to Section 99(1)(e)
 of the Land Title Act.

B.C.G.S. 93G.087

Scale: 1 : 2500 (Distances are in metres)



Bearings are astronomic, derived from
 Plan BCP10773.



Book of Reference		Area
Description		
Parcel B, D.L. 745, Cariboo District, Plan BCP10773		80m ²
Parcel A, D.L. 747, Cariboo District, Plan BCP10773		427m ²

PLAN NO. BCP 29851

Deposited in the Land Title Office at New
 Westminster this 09 day of MAY 2007

REGISTRAR

REF. # BB 87138

Certified Correct, according to Land Title
 Office Records. This 20th day of
 October, 2006. The plan was
 completed and checked, and the checklist
 filed under #56079, on the 23rd day
 of October, 2006.

Dale Keown
 Dale Keown, B.C.L.S.

This plan lies within the Fraser-Fort
 George Regional District.

McElhanney
 McElhanney Associates
 Land Surveying Ltd.

Prince George, B.C.
 Ph: (250) 562-1196 Fax: 563-1941

F.B.- D.L.- 745 File No. - 5429-E