

REFERENCE PLAN OF STATUTORY  
RIGHT OF WAY OVER PORTIONS  
OF LOT B, PLAN PGP38007 AND  
LOT C, PLAN BCP25441, ALL  
DISTRICT LOT 777, CARIBOO  
DISTRICT.

PLAN NO. BCP 29647

Deposited in the Land Title Office at New  
Westminster this 25th day of April 2007.

REGISTRAR

B3492203

Pursuant to Section 113  
of the Land Title Act.

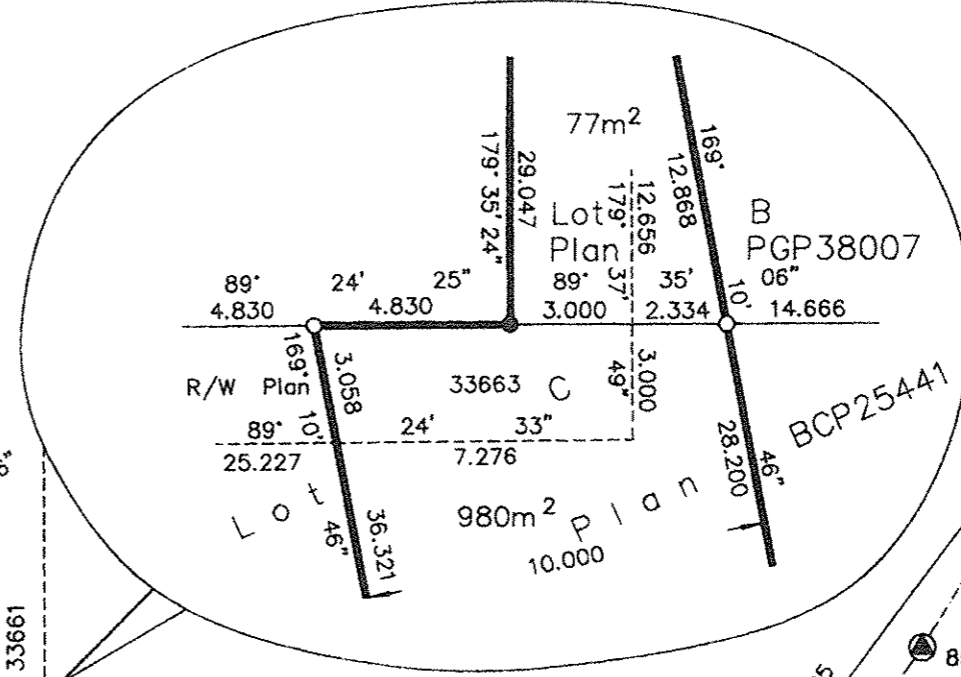
B.C.G.S. 93G.097

Scale: 1 : 750 (Distances are in metres)



LEGEND

- Standard Concrete Post Found
- Standard Iron Post Found
- Standard Iron Post Placed
- Control Monument Found



NOTE  
All internal intersections  
not posted due to construction.

Grid bearings are derived from observations between  
control monuments 85H1321 and 85H1331, integrated  
survey area number 39, City of Prince George, B.C.  
NAD83(CSRS)

Note: This plan shows ground level measured  
distances. Prior to computation of U.T.M.  
co-ordinates multiply by the combined  
factor 0.9995155

BOOK OF REFERENCE	
DESCRIPTION	AREA
Lot B, DL 777, Cariboo District, Plan PGP38007	77m <sup>2</sup>
Lot C, DL 777, Cariboo District, Plan BCP25441	980m <sup>2</sup>

I, Dale Keown, a British Columbia Land Surveyor, of  
Prince George, in British Columbia, certify that I was  
present at and personally superintended the survey  
represented by this plan, and that the survey and plan  
are correct. The field survey was completed on the 30th day  
of October, 2006. The plan was completed and  
checked, and the checklist filed under #56531, on the  
31st day of October, 2006.

*Dale Keown*

Dale Keown, B.C.L.S.

This plan lies within the Fraser-Fort  
George Regional District.

**KILBRIDE LAND SURVEYING LTD.**  
British Columbia Land Surveyors  
Prince George, B.C.  
Ph: (250) 562-1196 Fax: 562-3656

F.B.- RA    D.L.- 777    File No. -5337-0