

29266

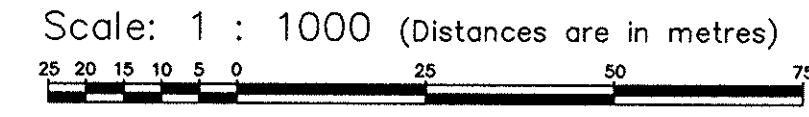
PLAN NO. BCP 27206

Deposited in the Land Title Office at New Westminster this 30 day of March 2007.

BB 75703

REGISTRAR

REFERENCE PLAN OF CONSOLIDATION OF LOT 1, PLAN BCP14702 AND PARCEL 1, PLAN PGP43028, EXCEPT PLANS PGP47540 AND BCP17447, BOTH OF DISTRICT LOT 2508, CARIBOO DISTRICT. Pursuant to Section 100(1)(b) of the Land Title Act. B.C.G.S. 93G.096

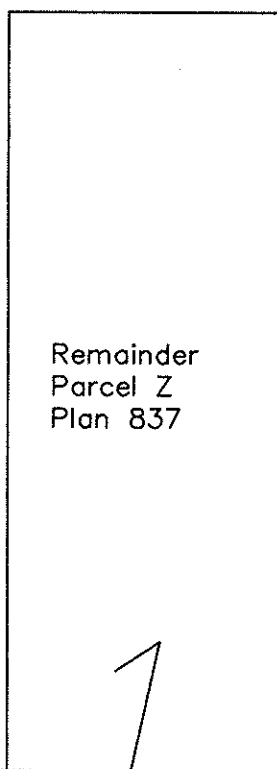


Grid bearings are derived from observations between control monuments 85h1310 and 85h1206, integrated survey area number 39, City of Prince George, B.C. NAD83(CSRS)

Note: This plan shows ground level measured distances. Prior to computation of U.T.M. co-ordinates multiply by the combined factor 0.99950925

LEGEND

- Standard Capped Post Found
- Standard Iron Post Found
- Standard Iron Post Placed
- Control Monument Found

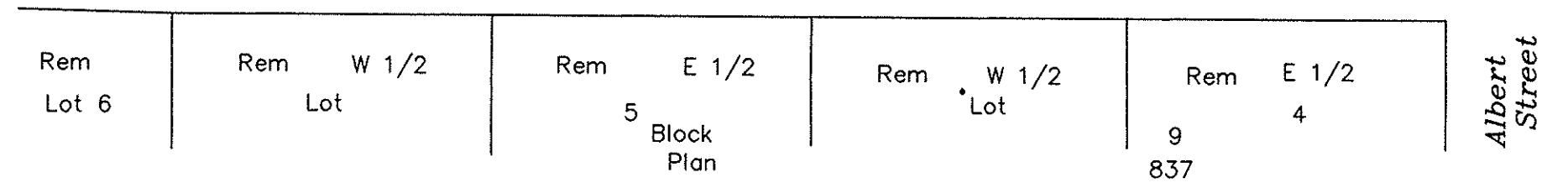
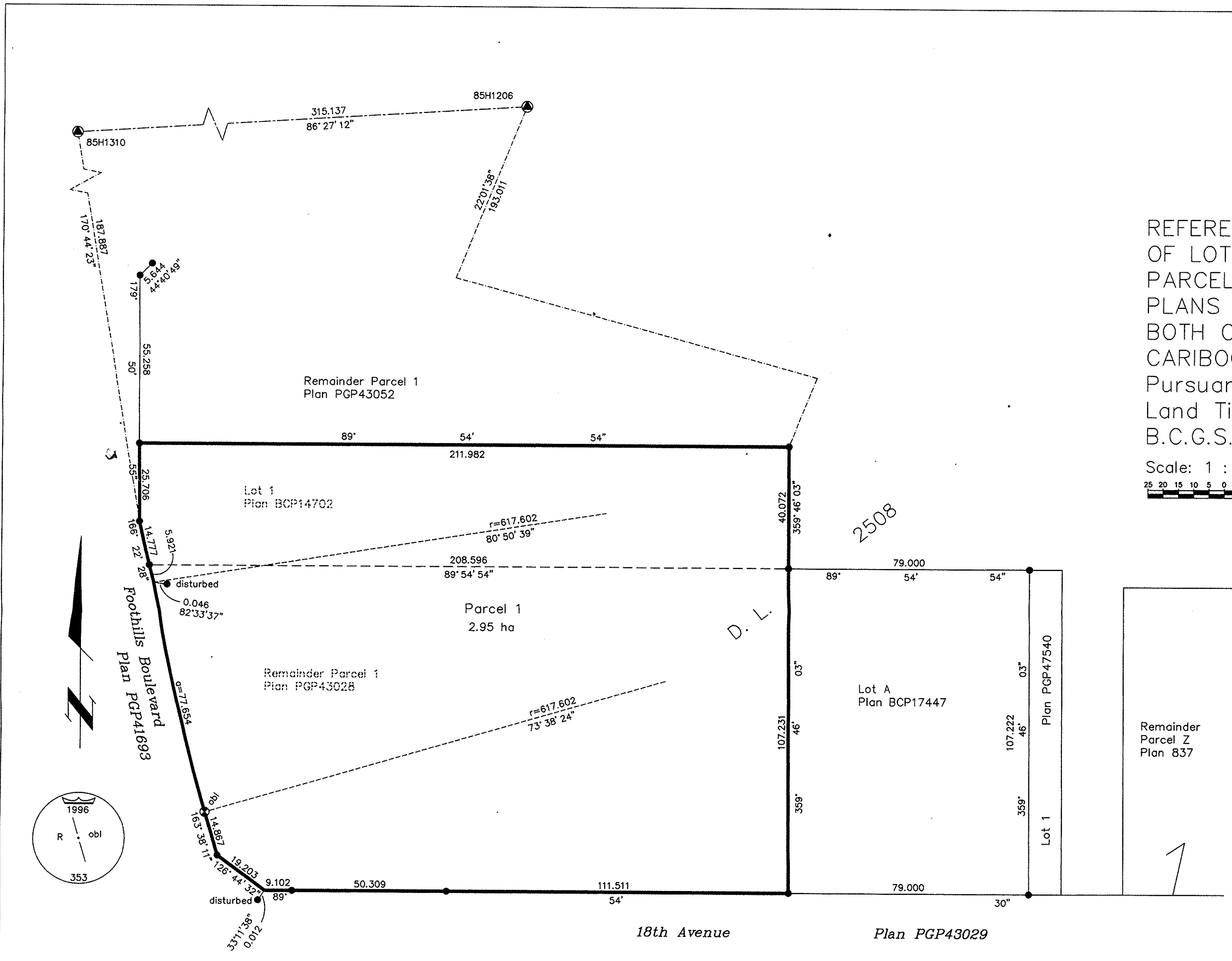


HER MAJESTY THE QUEEN IN RIGHT OF THE PROVINCE OF BRITISH COLUMBIA As represented by the Minister of Agriculture and Lands

Authorized Signatory Print Name: Dean Chorkas

Authorized Signatory Print Name:

Witness as to both signatures Robert Hinkley Print Name: 200-1488-144 Ave. Address: Prince George V2L4Y2 Postal Code Senior Project Manager Occupation



I, Gordon Kilbride, a British Columbia Land Surveyor, of Prince George, in British Columbia, certify that I was present at and personally supervised the survey represented by this plan, and that the survey and plan are correct. The field survey was completed on the 23 day of July, 2003. The plan was completed and checked, and the checklist filed under #36013, on the 19 day of August, 2005.

Gordon Kilbride, B.C.L.S.

This plan lies within the Fraser-Fort George Regional District.

KILBRIDE LAND SURVEYING LTD. British Columbia Land Surveyors Prince George, B.C. Ph: (250) 562-1196 Fax: 562-3656

F.B.- XE06 D.L.A 2508 File No. -030094C

SID: 807580 FILE: 7408394