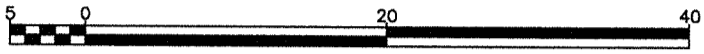


EXPLANATORY PLAN OF LEASE
OF A ONE STORY BUILDING
LOCATED ON LOT A, DISTRICT
LOT 936, CARIBOO DISTRICT,
PLAN 20921.

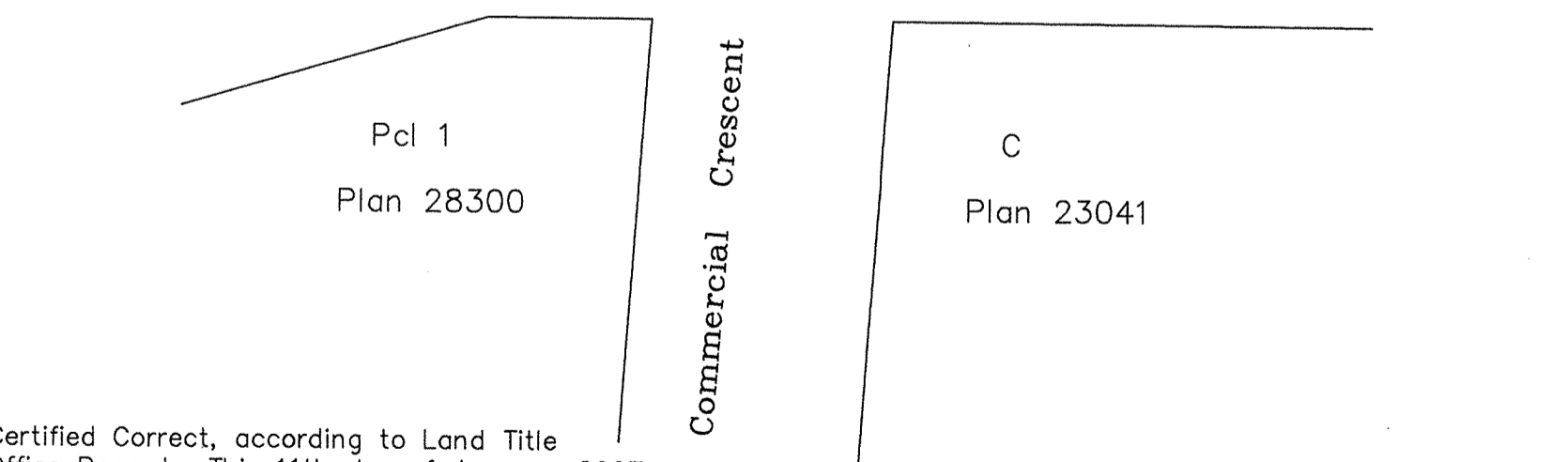
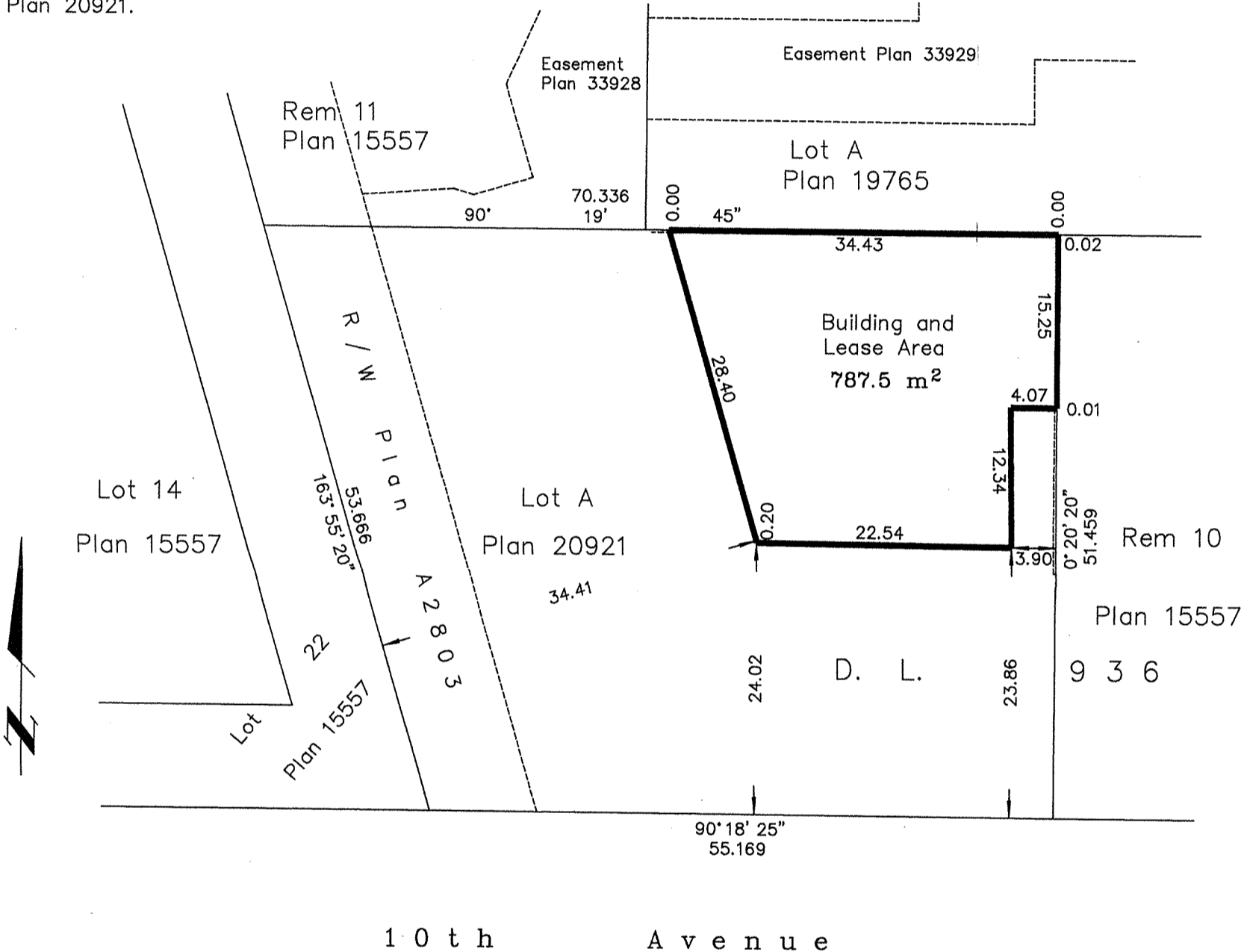
Pursuant to Section 99(1)(k)
of the Land Title Act.

B.C.G.S. 93G.097

Scale: 1 : 500 (Distances are in metres)



Bearings are astronomic, derived from
Plan 20921.



Certified Correct, according to Land Title
Office Records. This 11th day of January, 2007.
The plan was completed and checked, and
the checklist filed under #60607, on the
12th day of January, 2007.

Gordon Kilbride
Gordon Kilbride, B.C.L.S.


PLAN NO. BCP 28982

Deposited in the Land Title Office at New
Westminster this 12 day of March 2007.

REGISTRAR

BB476780

This plan lies within the Fraser-Fort
George Regional District.

 McElhanney McElhanney Associates Land Surveying Ltd. Prince George, B.C. Ph: (250) 561-2229 Fax: 563-1941		
F.B.- X0119	D.L.- 936	File No. - 5462-02