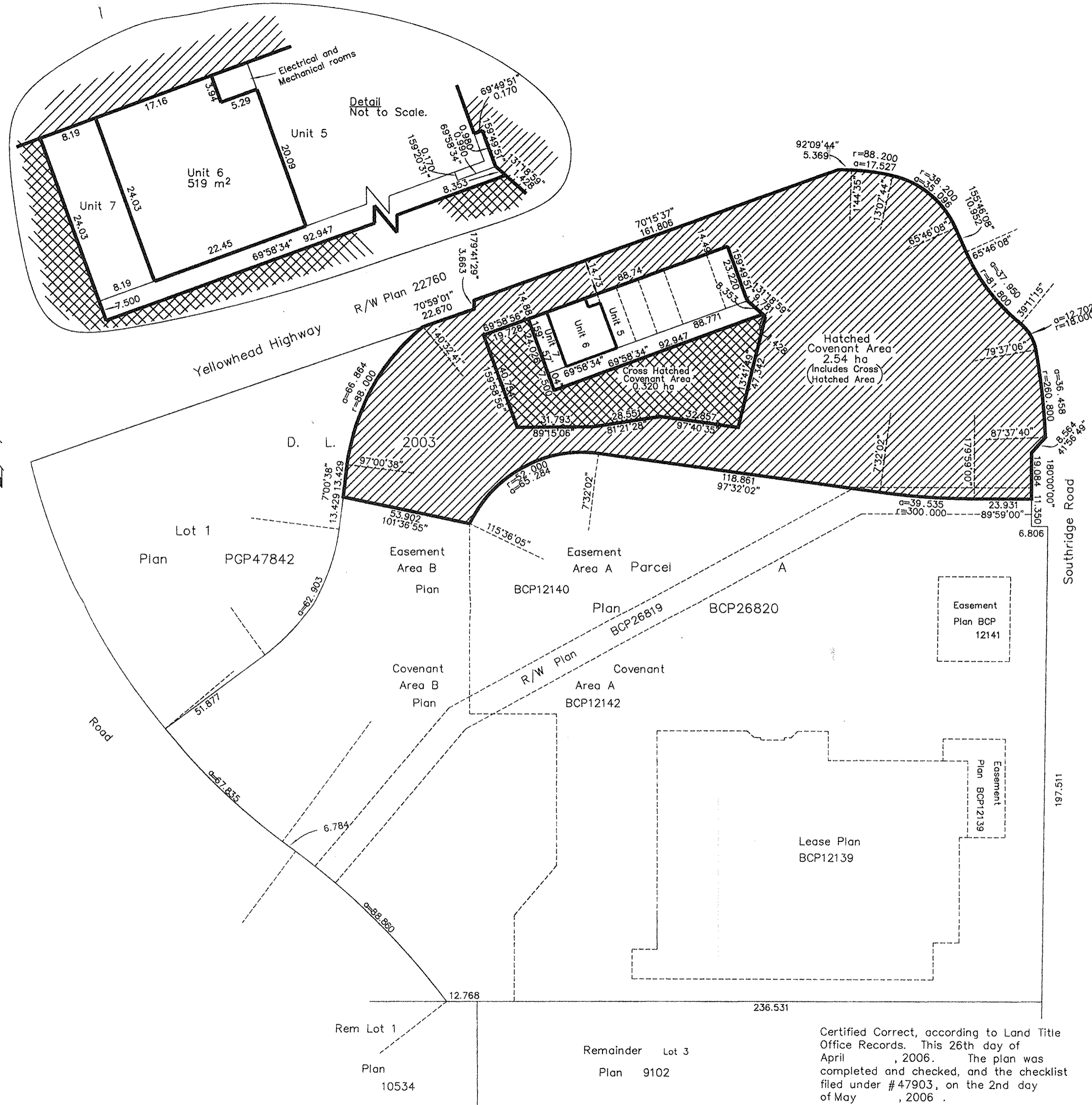


PLAN NO. BCP 28927

Deposited in the Land Title Office at New Westminster this 8 day of March 2007.

REGISTRAR *B B 475368*





EXPLANATORY PLAN OF LEASE OF PART OF THE MAIN FLOOR OF A ONE STORY BUILDING AND RESTRICTIVE COVENANT ON PART OF PARCEL A, DISTRICT LOT 2003, CARIBOO DISTRICT, PLAN BCP26820.

Pursuant to Section 99(1)(K) of the Land Title Act.
B.C.G.S. 93G.097

Scale: 1 : 1250 (Distances are in metres)

LEGEND

-  Denotes Hatched Covenant Area
-  Denotes Cross Hatched Covenant Area

This plan lies within the Fraser-Fort George Regional District.

Certified Correct, according to Land Title Office Records. This 26th day of April, 2006. The plan was completed and checked, and the checklist filed under #47903, on the 2nd day of May, 2006.

Dale Keown
Dale Keown, B.C.L.S.

McElhanney
McElhanney Associates
Land Surveying Ltd.
Prince George, B.C.
Ph: (250) 562-1196 Fax: 563-1941