

EXPLANATORY PLAN OF EASEMENT ON LOT 1, DISTRICT LOT 753, CARIBOO DISTRICT, PLAN 23572.

Pursuant to Section 99 of the Land Title Act.

B.C.O.S. 930.087

Scale: 1 : 500 (Distances are in metres)



Bearings are astronomic, derived from Plan 23572.

Easement Area

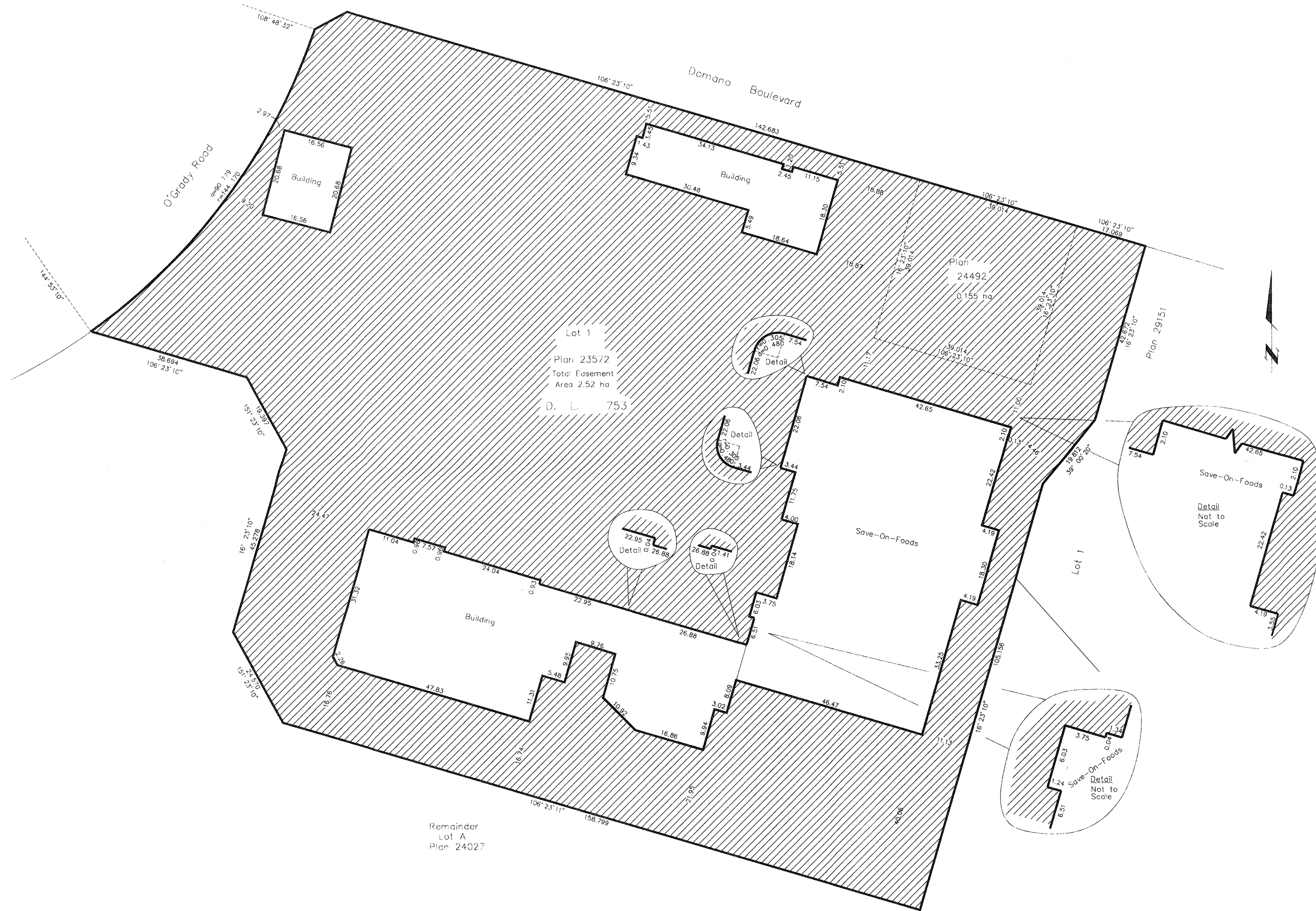
Certified Correct, according to Land Title Office Records. This 17th day of May, 2004. The plan was completed and checked, and the checklist filed under #19063, on the 4th day of April, 2004.

Dale Keown, B.C.L.S.

This plan lies within the Fraser-Fort George Regional District.

KILBRIDE LAND SURVEYING LTD.  
British Columbia Land Surveyors  
Prince George, B.C.  
Ph: (250) 562-1196 Fax: 562-3656

F.B.- RA D.L.- 753 File No. - 030100E



Lot 1  
Plan 23572  
Total Easement Area 2.52 ha  
D. L. 753

Remainder Lot A  
Plan 24027

