

REFERENCE PLAN OF RIGHT OF WAY OVER PARCEL 1,  
 (BYLAW PLAN BCP 28773) DEDICATED ROAD ON  
 PLAN 17631, ADJACENT TO LOT 83, PLAN 17631;  
 OVER PARCEL 1, (BYLAW PLAN BCP 28772)  
 DEDICATED ROAD ON PLAN 18054, ADJACENT  
 TO LOT 6, PLAN 18054 AND OVER PARCEL 1,  
 (BYLAW PLAN BCP 28771) DEDICATED ROAD ON  
 PLAN 18054, ADJACENT TO LOTS 6 & 7,  
 PLAN 18054, ALL DISTRICT LOT 8175,  
 CARIBOO DISTRICT.

PLAN NO. BCP 28774

Deposited in the Land Title Office at New  
 Westminster this 21 day of Feb 2007.

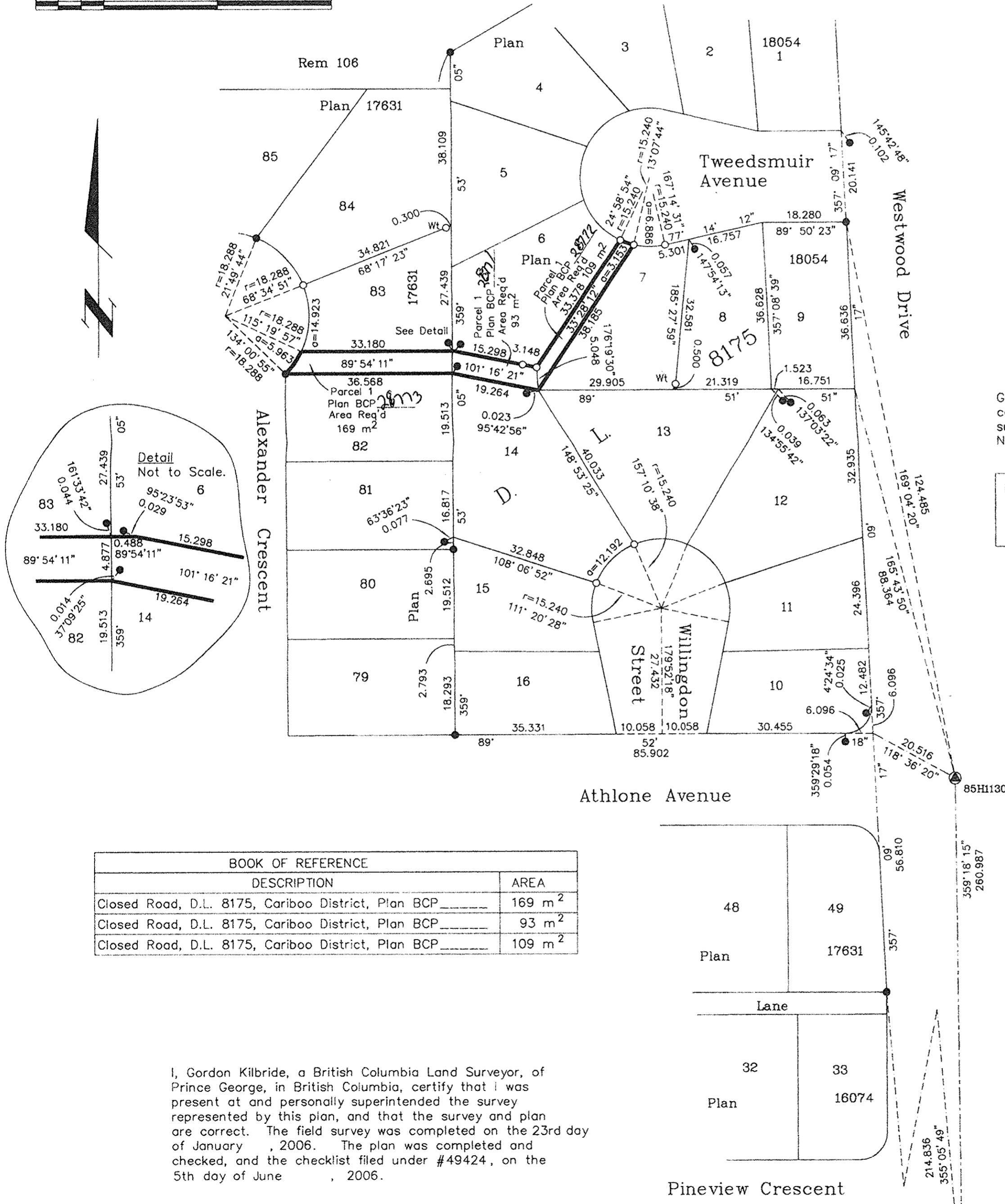
REGISTRAR

B015157

Pursuant to Section 113  
 of the Land Title Act.

B.C.G.S. 93G.087

Scale: 1 : 750 (Distances are in metres)



Grid bearings are derived from observations between  
 control monuments 85H1126 and 85H1130, integrated  
 survey area number 39, City of Prince George, B.C.  
 NAD83(CSRS)

Note: This plan shows ground level measured  
 distances. Prior to computation of U.T.M.  
 co-ordinates multiply by the combined  
 factor 0.9995124

LEGEND

- Standard Iron Post Found
- Standard Iron Post Placed
- ⊙ Control Monument Found

BOOK OF REFERENCE	
DESCRIPTION	AREA
Closed Road, D.L. 8175, Cariboo District, Plan BCP _____	169 m <sup>2</sup>
Closed Road, D.L. 8175, Cariboo District, Plan BCP _____	93 m <sup>2</sup>
Closed Road, D.L. 8175, Cariboo District, Plan BCP _____	109 m <sup>2</sup>

I, Gordon Kilbride, a British Columbia Land Surveyor, of  
 Prince George, in British Columbia, certify that I was  
 present at and personally superintended the survey  
 represented by this plan, and that the survey and plan  
 are correct. The field survey was completed on the 23rd day  
 of January, 2006. The plan was completed and  
 checked, and the checklist filed under #49424, on the  
 5th day of June, 2006.

*Gordon Kilbride*  
 Gordon Kilbride, B.C.L.S.

This plan lies within the Fraser-Fort  
 George Regional District.

**KILBRIDE LAND SURVEYING LTD.**  
 British Columbia Land Surveyors  
 Prince George, B.C.

Ph: (250) 562-1196 Fax: 562-3656

F.B.- XK46

D.L.- 8175

File No. - 050275R1