

EXPLANATORY PLAN TO
 ACCOMPANY CITY OF
 PRINCE GEORGE HIGHWAY
 CLOSURE AND REMOVAL
 OF HIGHWAY DEDICATION
 BYLAW 7774 OVER
 WALKWAY DEDICATED
 BY PLAN 17631, ADJACENT
 TO LOTS 82 AND 83, DISTRICT
 LOT 8175, CARIBOO DISTRICT,
 PLAN 17631.

PLAN NO. BCP 28773

Deposited in the Land Title Office at New
 Westminster this 26 day of Jun 2007.

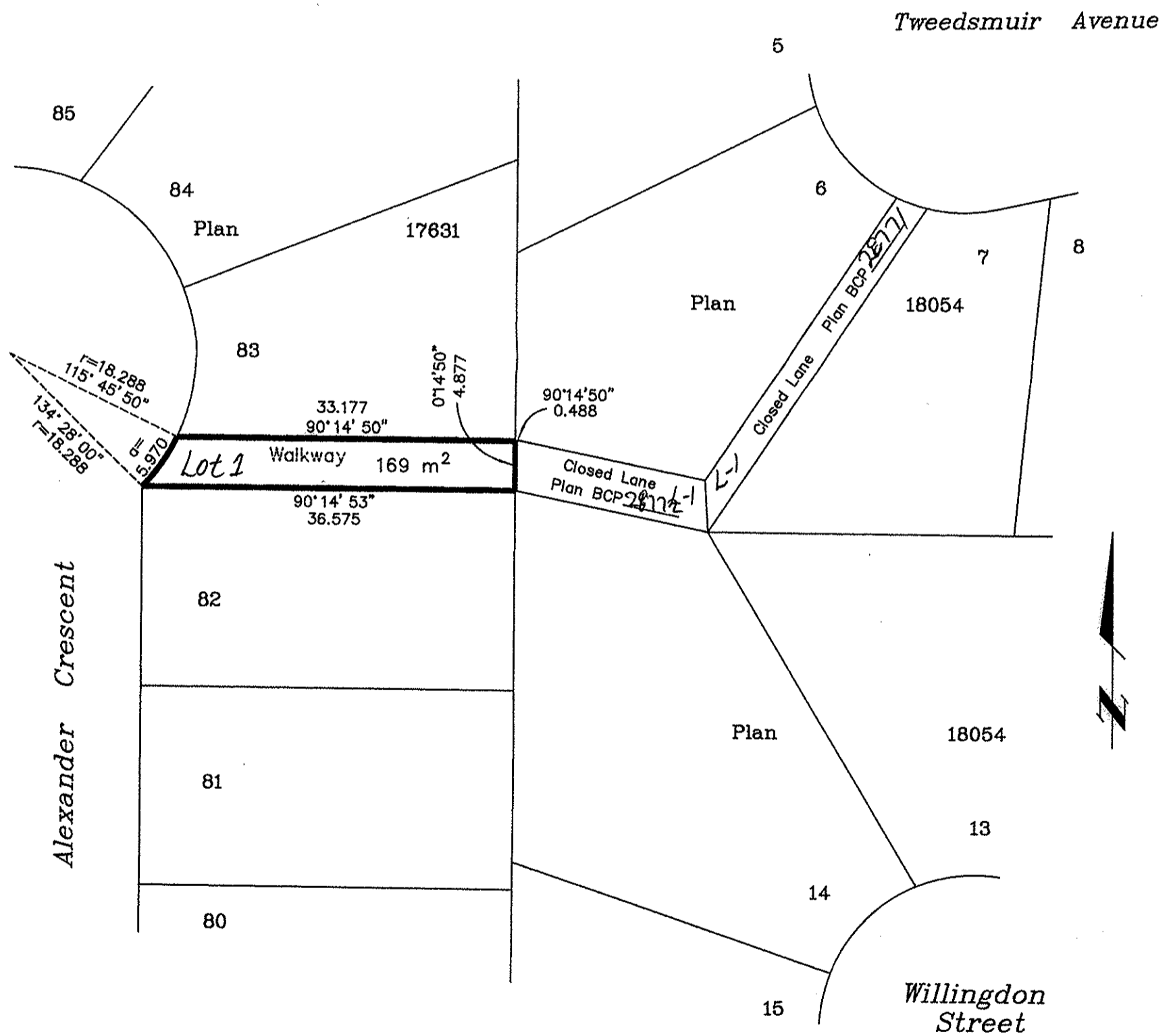
REGISTRAR

3065650

Pursuant to Section 40 of the Community
 Charter and Section 120 of the Land Title Act.

B.C.G.S. 93G.087

Scale: 1 : 500 (Distances are in metres)



Certified Correct, according to Land Title
 Office Records. This 21st day of
 July, 2005. The plan was
 completed and checked, and the checklist
 filed under #49710, on the 9th day
 of June, 2006.

Dale Keown
 Dale Keown, B.C.L.S.

This plan lies within the Fraser-Fort
 George Regional District.

KILBRIDE LAND SURVEYING LTD. British Columbia Land Surveyors Prince George, B.C. Ph: (250) 562-1196 Fax: 562-3656		
F.B.-	D.L.- 8175	File No. -050275C