

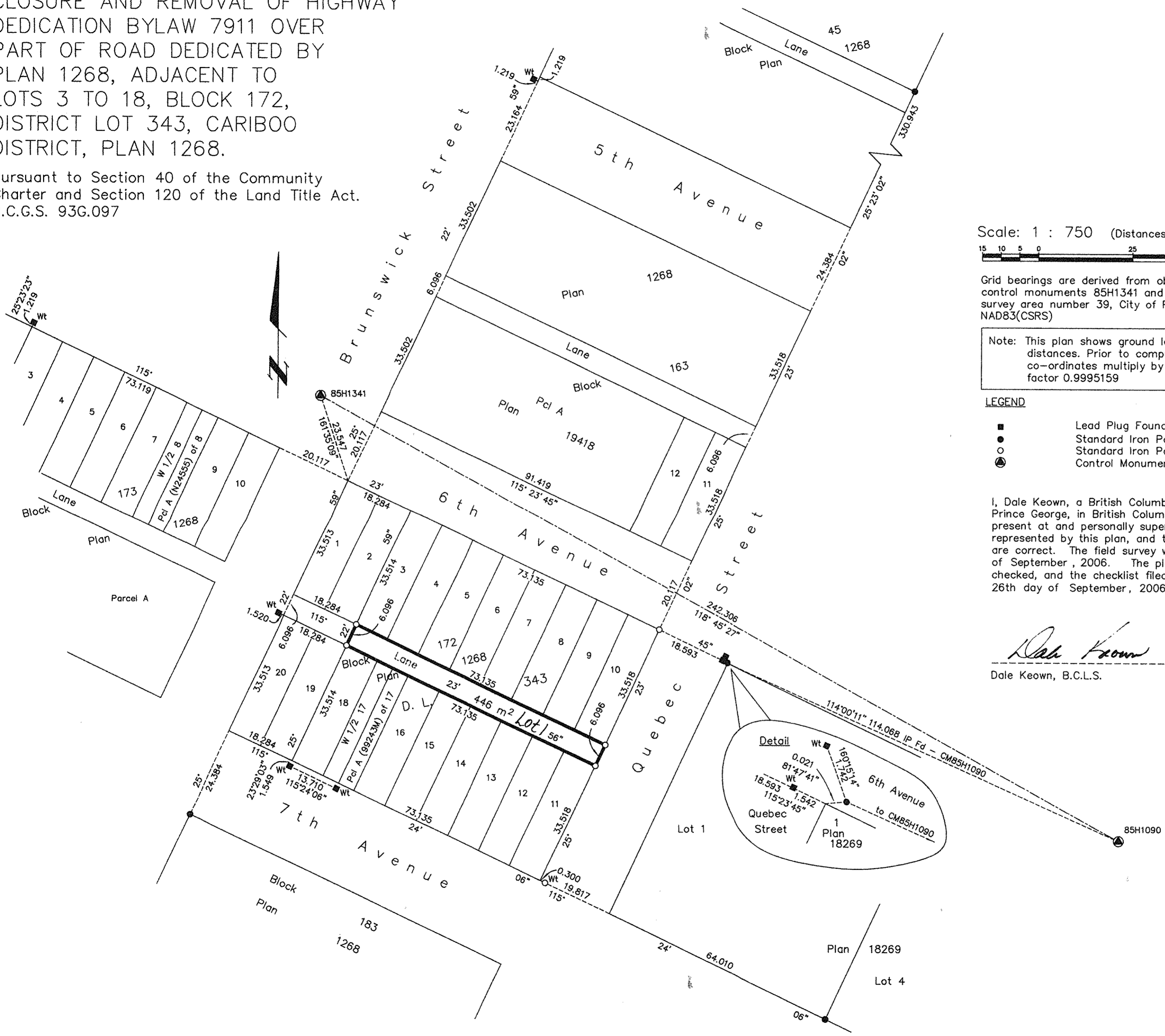
REFERENCE PLAN TO ACCOMPANY
CITY OF PRINCE GEORGE HIGHWAY
CLOSURE AND REMOVAL OF HIGHWAY
DEDICATION BYLAW 7911 OVER
PART OF ROAD DEDICATED BY
PLAN 1268, ADJACENT TO
LOTS 3 TO 18, BLOCK 172,
DISTRICT LOT 343, CARIBOO
DISTRICT, PLAN 1268.

Pursuant to Section 40 of the Community
Charter and Section 120 of the Land Title Act.
B.C.G.S. 93G.097

PLAN NO. BCP 27585

BN 512379
Deposited in the Land Title Office at New
Westminster this 8 day of DEC 2006.

REGISTRAR



Scale: 1 : 750 (Distances are in metres)



Grid bearings are derived from observations between
control monuments 85H1341 and 85H1090, integrated
survey area number 39, City of Prince George, B.C.
NAD83(CSRS)

Note: This plan shows ground level measured
distances. Prior to computation of U.T.M.
co-ordinates multiply by the combined
factor 0.9995159

LEGEND

- Lead Plug Found
- Standard Iron Post Found
- Standard Iron Post Placed
- ⊙ Control Monument Found

I, Dale Keown, a British Columbia Land Surveyor, of
Prince George, in British Columbia, certify that I was
present at and personally superintended the survey
represented by this plan, and that the survey and plan
are correct. The field survey was completed on the 14th day
of September, 2006. The plan was completed and
checked, and the checklist filed under #54729, on the
26th day of September, 2006.

Dale Keown

Dale Keown, B.C.L.S.

This plan lies within the Fraser-Fort
George Regional District.

McElhanney
McElhanney Associates
Land Surveying Ltd.

Prince George, B.C.
Ph: (250) 562-1196 Fax: 563-1941

F.B.- XM 65 | D.L.- 343(172) | File No. - 5385-0