

REFERENCE PLAN OF EASEMENT
OVER PART OF LOT 2, PLAN BCP 27230,
DISTRICT LOT 2426, CARIBOO DISTRICT.

PLAN NO. BCP 27231

Deposited in the Land Title Office at New
Westminster this 16 day of NOV 2006.

Pursuant to Section 99(1)(e)
of the Land Title Act.

B.C.G.S. 93J.006

REGISTRAR

BAS70328

Scale: 1 : 2500 (Distances are in metres)

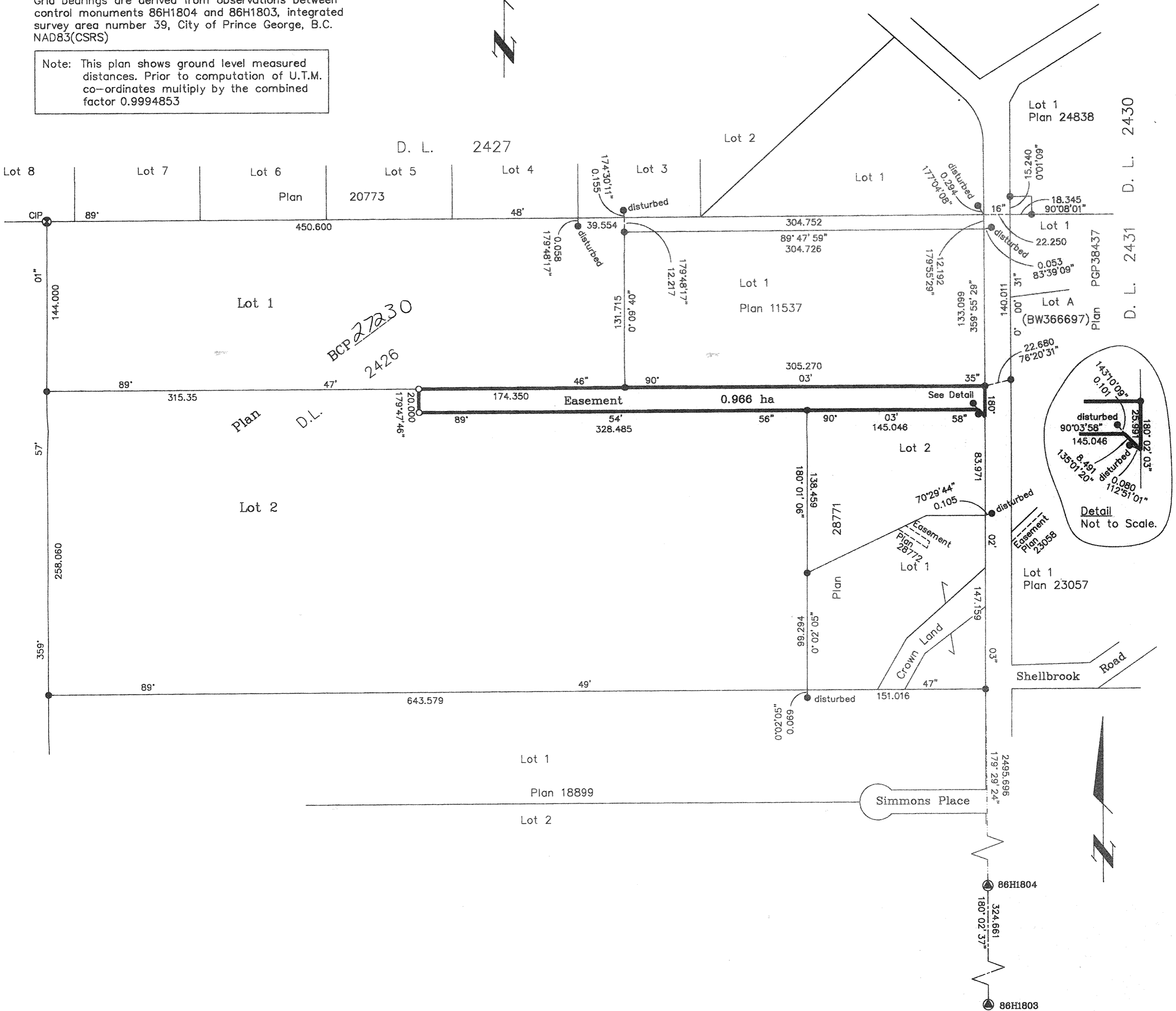


LEGEND

- Standard Capped Post Found
- Standard Iron Post Found
- Standard Iron Post Placed
- Control Monument Found

Grid bearings are derived from observations between
control monuments 86H1804 and 86H1803, integrated
survey area number 39, City of Prince George, B.C.
NAD83(CSRS)

Note: This plan shows ground level measured
distances. Prior to computation of U.T.M.
co-ordinates multiply by the combined
factor 0.9994853



I, Gordon Kilbride, a British Columbia Land Surveyor, of
Prince George, in British Columbia, certify that I was
present at and personally superintended the survey
represented by this plan, and that the survey and plan
are correct. The field survey was completed on the 16th day
of August, 2006. The plan was completed and
checked, and the checklist filed under #53338, on the
28th day of August, 2006.

Gordon Kilbride
Gordon Kilbride, B.C.L.S.

This plan lies within the Fraser-Fort
George Regional District.

McElhanney
McElhanney Associates
Land Surveying Ltd.
Prince George, B.C.
Ph: (250) 561-2229 Fax: 563-1941

F.B.- XN41	D.L.- 2426	File No. -05344E
------------	------------	------------------