

SUBDIVISION PLAN OF THE
NORTH 1/2 OF THE N.E. 1/4 OF
DISTRICT LOT 2426,
CARIBOO DISTRICT, EXCEPT
PLANS 11537 AND 28771.
B.C.G.S. 93J.006

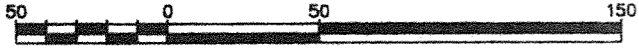
PLAN NO. BCP 27230

Deposited in the Land Title Office at New
Westminster this 16 day of NOV. 2006.

REGISTRAR

BAS 70326

Scale: 1 : 2500 (Distances are in metres)

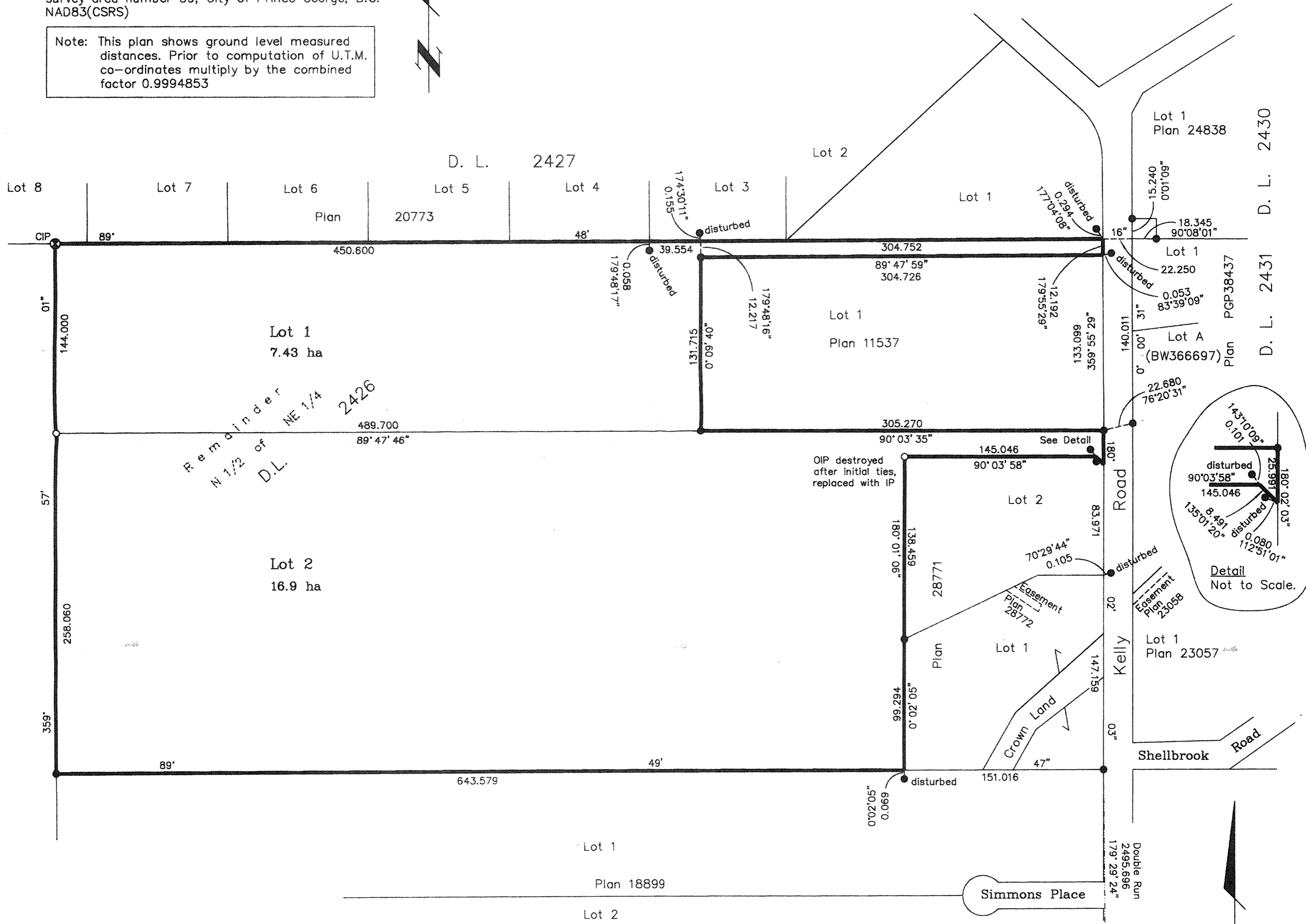


LEGEND

- ⊗ Standard Capped Post Found
- Standard Iron Post Found
- Standard Iron Post Placed
- ⊙ Control Monument Found

Grid bearings are derived from observations between
control monuments 86H1804 and 86H1803, integrated
survey area number 39, City of Prince George, B.C.
NAD83(CSRS)

Note: This plan shows ground level measured
distances. Prior to computation of U.T.M.
co-ordinates multiply by the combined
factor 0.9994853



Owner:

 Andrew Paul Fehr

 Cheryl Mae Fehr
 Witness to both
 CAROLE EBBETT
 Print Name
 c/o P.O. Box 2128
 Address
 PRINCE GEORGE, BC V2N 2J6
 Postal Code
 Bookkeeper
 Occupation

I, Gordon Kilbride, a British Columbia Land Surveyor, of
Prince George, in British Columbia, certify that I was
present at and personally supervised the survey
represented by this plan, and that the survey and plan
are correct. The field survey was completed on the 16th day
of August, 2006. The plan was completed and
checked, and the checklist filed under #53339, on the
28th day of August, 2006.

Gordon Kilbride, B.C.L.S.

Approved under the Land Title Act this 23 day of
October, 2006.

Approving Officer
 City of Prince George

This plan lies within the Fraser-Fort
George Regional District.

McElhanney
 McElhanney Associates
 Land Surveying Ltd.

Prince George, B.C.
 Ph: (250) 561-2229 Fax: 563-1941

F.B.- XN41 D.L.- 2426 File No. -05344