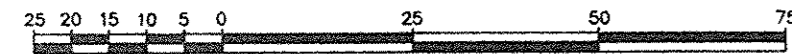


REFERENCE PLAN OF STATUTORY
RIGHT OF WAY OVER A PORTION
OF LOT 2, EXCEPT: PART ON
PLAN BCP3565, DISTRICT LOT 2003,
CARIBOO DISTRICT, PLAN PGP47842.

Pursuant to Section 99(1)(e)
of the Land Title Act.

B.C.G.S. 97G.097

Scale: 1 : 1000 (Distances are in metres)



LEGEND

- Standard Iron Post Placed
- Standard Iron Post Found
- ⊙ Control Monument Found

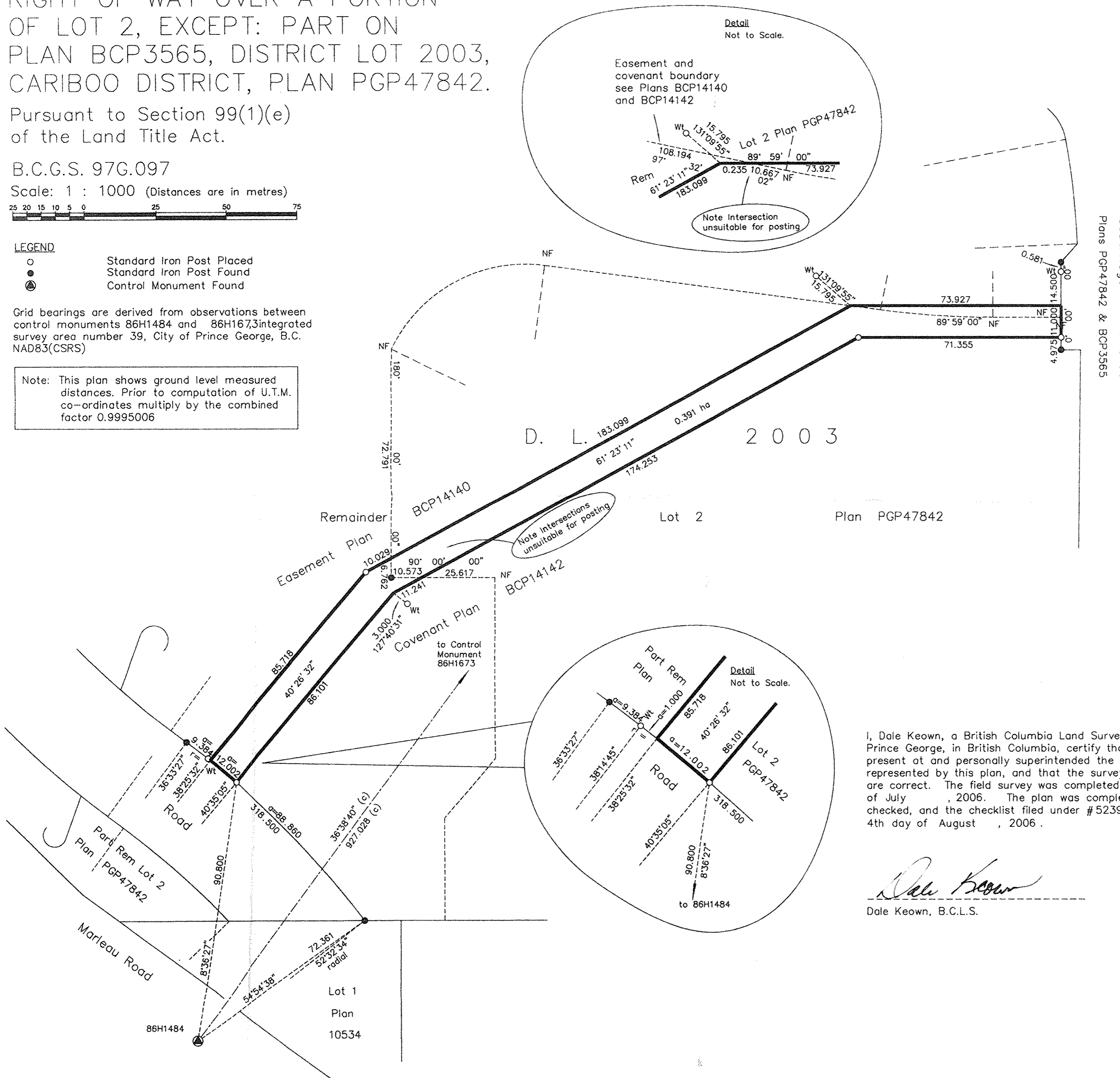
Grid bearings are derived from observations between control monuments 86H1484 and 86H1673 integrated survey area number 39, City of Prince George, B.C. NAD83(CSRS)

Note: This plan shows ground level measured distances. Prior to computation of U.T.M. co-ordinates multiply by the combined factor 0.9995006

PLAN NO. BCP 26819

BAS62948
Deposited in the Land Title Office at New
Westminster this 25 day of Oct 2006.

REGISTRAR



I, Dale Keown, a British Columbia Land Surveyor, of Prince George, in British Columbia, certify that I was present at and personally superintended the survey represented by this plan, and that the survey and plan are correct. The field survey was completed on the 26th day of July, 2006. The plan was completed and checked, and the checklist filed under # 52392, on the 4th day of August, 2006.

Dale Keown
Dale Keown, B.C.L.S.

This plan lies within the Fraser-Fort George Regional District.

McElhanney
McElhanney Associates
Land Surveying Ltd.
Prince George, B.C.
Ph: (250) 562-1196 Fax: 562-3656

F.B.- RA	D.L.- 2003	File No. - 05359-0
----------	------------	--------------------