

REFERENCE PLAN OF STATUTORY
RIGHT OF WAY OVER A PORTION
OF LOT 7, DISTRICT LOT 2433,
CARIBOO DISTRICT, PLAN 9394,
EXCEPT PLAN 30417.

Pursuant to Section 113
of the Land Title Act.

B.C.G.S. 93J.007

Scale: 1 : 750 (Distances are in metres)

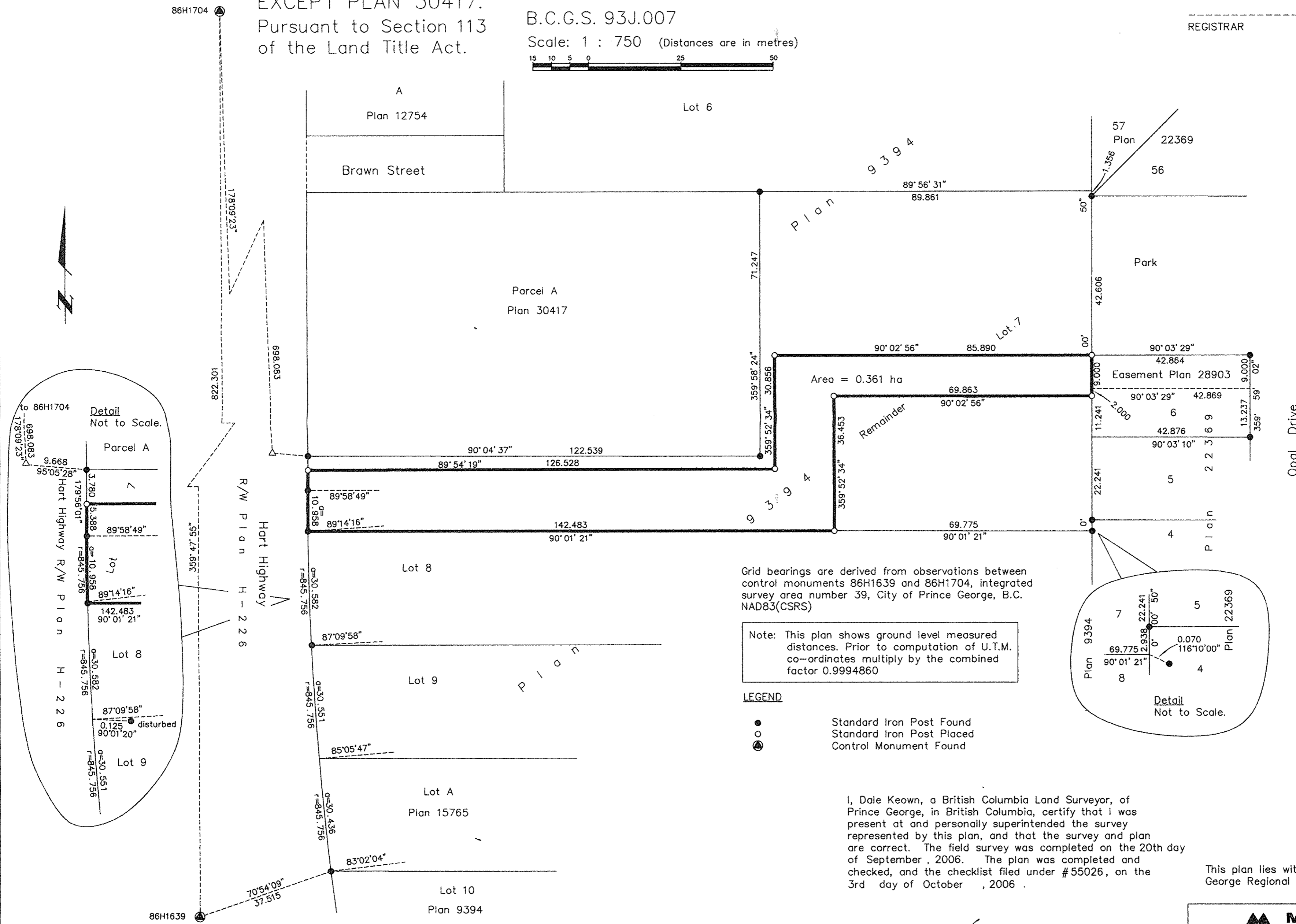


PLAN NO. BCP 26469

BR211404

Deposited in the Land Title Office at New
Westminster this 10 day of OCT 2006

REGISTRAR



Grid bearings are derived from observations between control monuments 86H1639 and 86H1704, integrated survey area number 39, City of Prince George, B.C. NAD83(CSRS)

Note: This plan shows ground level measured distances. Prior to computation of U.T.M. co-ordinates multiply by the combined factor 0.9994860

LEGEND

- Standard Iron Post Found
- Standard Iron Post Placed
- ⊙ Control Monument Found

I, Dale Keown, a British Columbia Land Surveyor, of Prince George, in British Columbia, certify that I was present at and personally superintended the survey represented by this plan, and that the survey and plan are correct. The field survey was completed on the 20th day of September, 2006. The plan was completed and checked, and the checklist filed under #55026, on the 3rd day of October, 2006.

This plan lies within the Fraser-Fort George Regional District.

Dale Keown
Dale Keown, B.C.L.S.

McElhanney
McElhanney Associates
Land Surveying Ltd.
Prince George, B.C.
Ph: (250) 562-1196 Fax: 563-1941

F.B.- RA D.L.- 2433 File No. -5412-0