

Deposited in the Land Title Office at New Westminster this 22 day of *Aug* 2006.

*D. MacDonald*  
REGISTRAR

BA204569

REFERENCE PLAN OF EASEMENTS  
OVER PARTS OF LOTS 2, 3, 5, 6, 24,  
25, 26, 27, 29, 30, 31, 32, 33, 34,  
41 AND 42, DISTRICT LOT 1605,  
CARIBOO DISTRICT, PLAN BCP *25534*.

Pursuant to Section 99  
of the Land Title Act.

B.C.G.S. 93G.087

Scale: 1 : 750 (Distances are in metres)

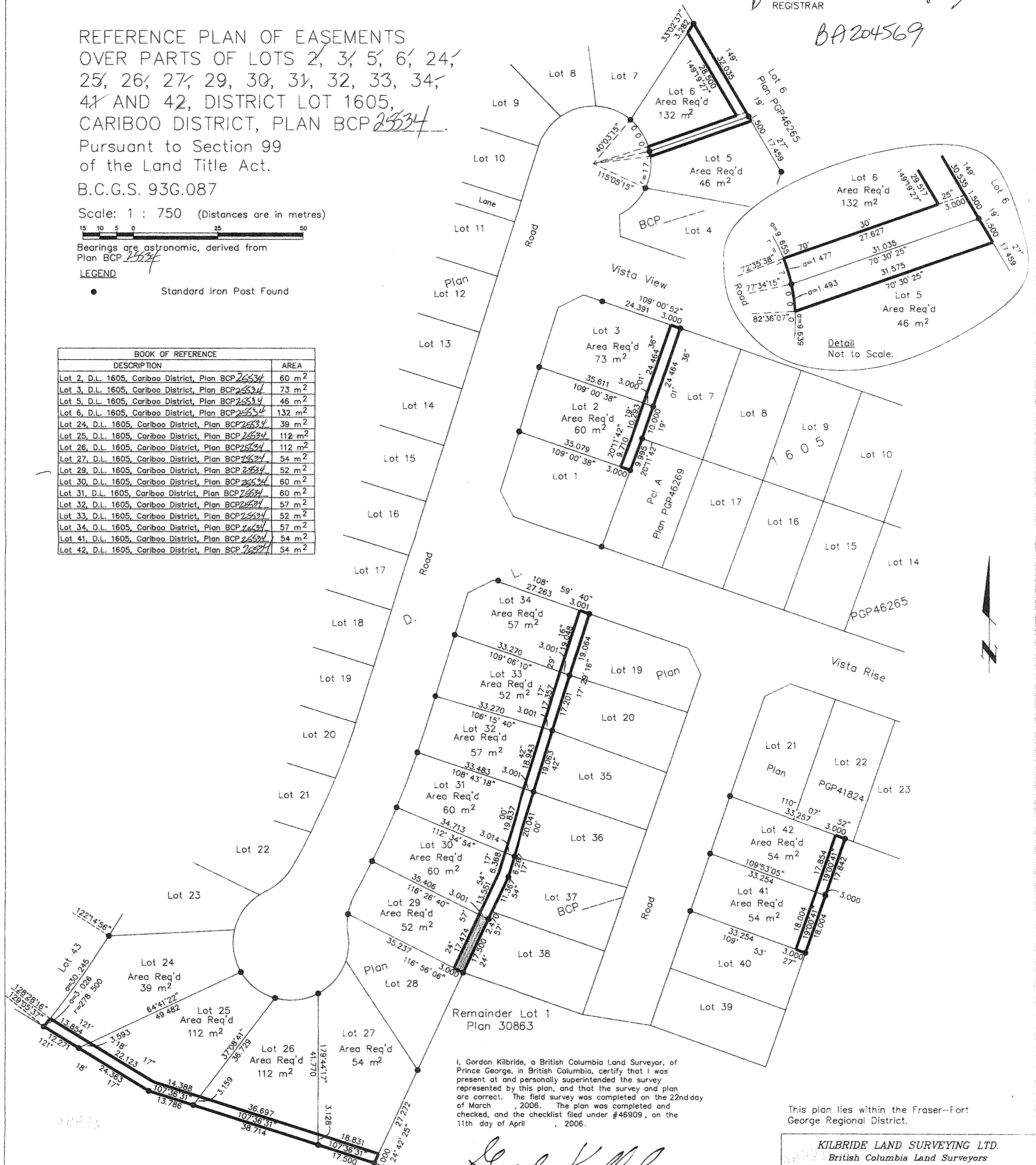


Bearings are astronomic, derived from  
Plan BCP *25534*.

LEGEND

- Standard Iron Post Found

BOOK OF REFERENCE	
DESCRIPTION	AREA
Lot 2, D.L. 1605, Cariboo District, Plan BCP <i>25534</i>	60 m <sup>2</sup>
Lot 3, D.L. 1605, Cariboo District, Plan BCP <i>25534</i>	73 m <sup>2</sup>
Lot 5, D.L. 1605, Cariboo District, Plan BCP <i>25534</i>	46 m <sup>2</sup>
Lot 6, D.L. 1605, Cariboo District, Plan BCP <i>25534</i>	132 m <sup>2</sup>
Lot 24, D.L. 1605, Cariboo District, Plan BCP <i>25534</i>	39 m <sup>2</sup>
Lot 25, D.L. 1605, Cariboo District, Plan BCP <i>25534</i>	112 m <sup>2</sup>
Lot 26, D.L. 1605, Cariboo District, Plan BCP <i>25534</i>	112 m <sup>2</sup>
Lot 27, D.L. 1605, Cariboo District, Plan BCP <i>25534</i>	54 m <sup>2</sup>
Lot 29, D.L. 1605, Cariboo District, Plan BCP <i>25534</i>	52 m <sup>2</sup>
Lot 30, D.L. 1605, Cariboo District, Plan BCP <i>25534</i>	60 m <sup>2</sup>
Lot 31, D.L. 1605, Cariboo District, Plan BCP <i>25534</i>	60 m <sup>2</sup>
Lot 32, D.L. 1605, Cariboo District, Plan BCP <i>25534</i>	57 m <sup>2</sup>
Lot 33, D.L. 1605, Cariboo District, Plan BCP <i>25534</i>	52 m <sup>2</sup>
Lot 34, D.L. 1605, Cariboo District, Plan BCP <i>25534</i>	57 m <sup>2</sup>
Lot 41, D.L. 1605, Cariboo District, Plan BCP <i>25534</i>	54 m <sup>2</sup>
Lot 42, D.L. 1605, Cariboo District, Plan BCP <i>25534</i>	54 m <sup>2</sup>



I, Gordon Kilbride, a British Columbia Land Surveyor, of Prince George, in British Columbia, certify that I was present at and personally superintended the survey represented by this plan, and that the survey and plan are correct. The field survey was completed on the 22nd day of March, 2006. The plan was completed and checked, and the checklist filed under #46909, on the 11th day of April, 2006.

*Gordon Kilbride*  
Gordon Kilbride, B.C.L.S.

This plan lies within the Fraser-Fort George Regional District.

KILBRIDE LAND SURVEYING LTD.  
British Columbia Land Surveyors  
Prince George, B.C.  
Ph: (250) 562-1196 Fax: 562-3656