

25535

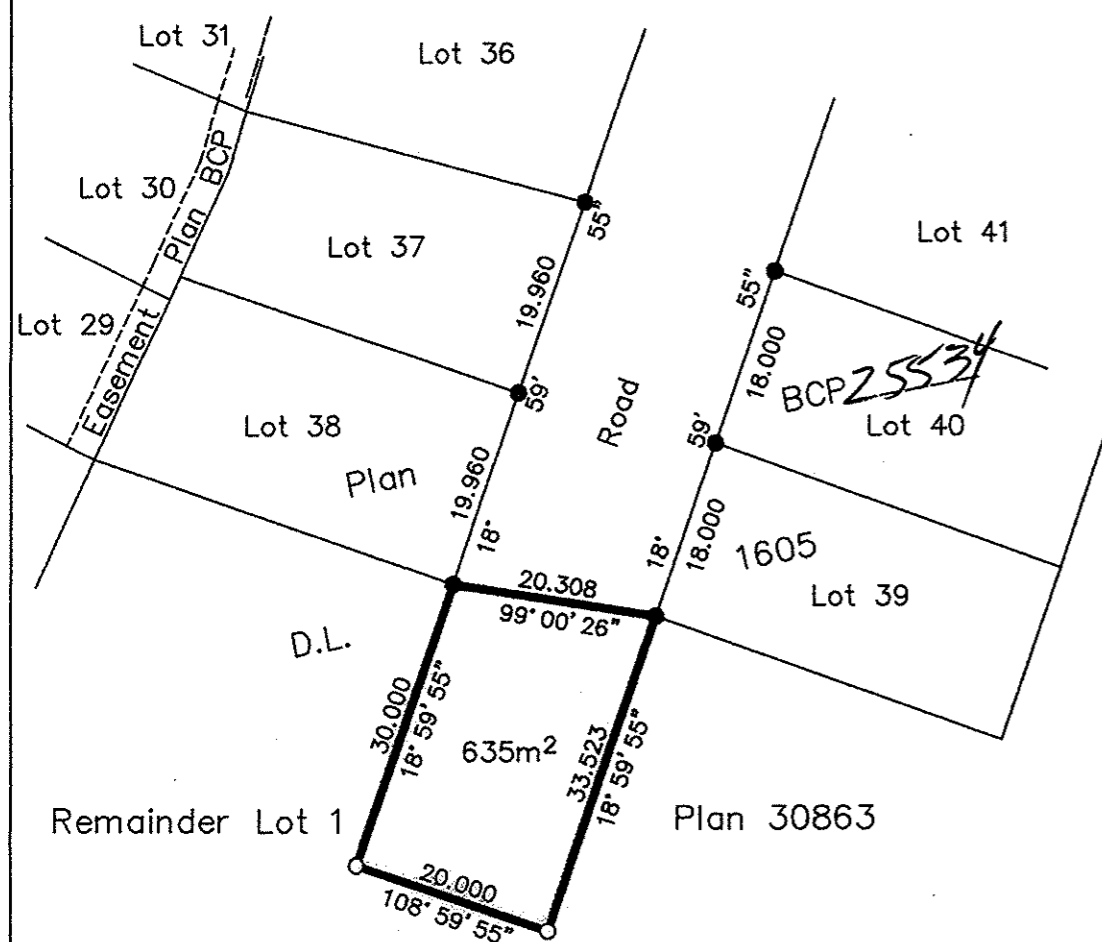
PLAN. NO. BCP _____

Deposited in the Land Title Office at New Westminster this 7th day of Aug 2006

J. McDonald
REGISTRAR

BA2 ~~04562~~

REFERENCE PLAN OF RIGHT OF WAY OVER PART OF LOT 1, DISTRICT LOT 1605, PLAN 30863, EXCEPT PLANS 34562, PGP38585, PGP41824, PGP46265, PGP46269 AND BCP 25534, DISTRICT LOT 1605, CARIBOO DISTRICT. Pursuant to Section 113 of the Land Title Act. B.C.G.S. 93G.086



Scale: 1 : 750 (Distances are in metres)



Bearings are astronomic, derived from Plan BCP 25534

LEGEND

- Standard Iron Post Found
- Standard Iron Post Placed

I, Dale Keown, a British Columbia Land Surveyor, of Prince George, in British Columbia, certify that I was present at and personally superintended the survey represented by this plan, and that the survey and plan are correct. The field survey was completed on the 28th day of April, 2006. The plan was completed and checked, and the checklist filed under #47981, on the 4th day of May, 2006.

Dale Keown
Dale Keown, B.C.L.S.

This plan lies within the Fraser-Fort George Regional District.

KILBRIDE LAND SURVEYING LTD.
British Columbia Land Surveyors
Prince George, B.C.
Ph: (250) 562-1196 Fax: 562-3656

F.B.- RA D.L.- 1605 File No. - 050298R1