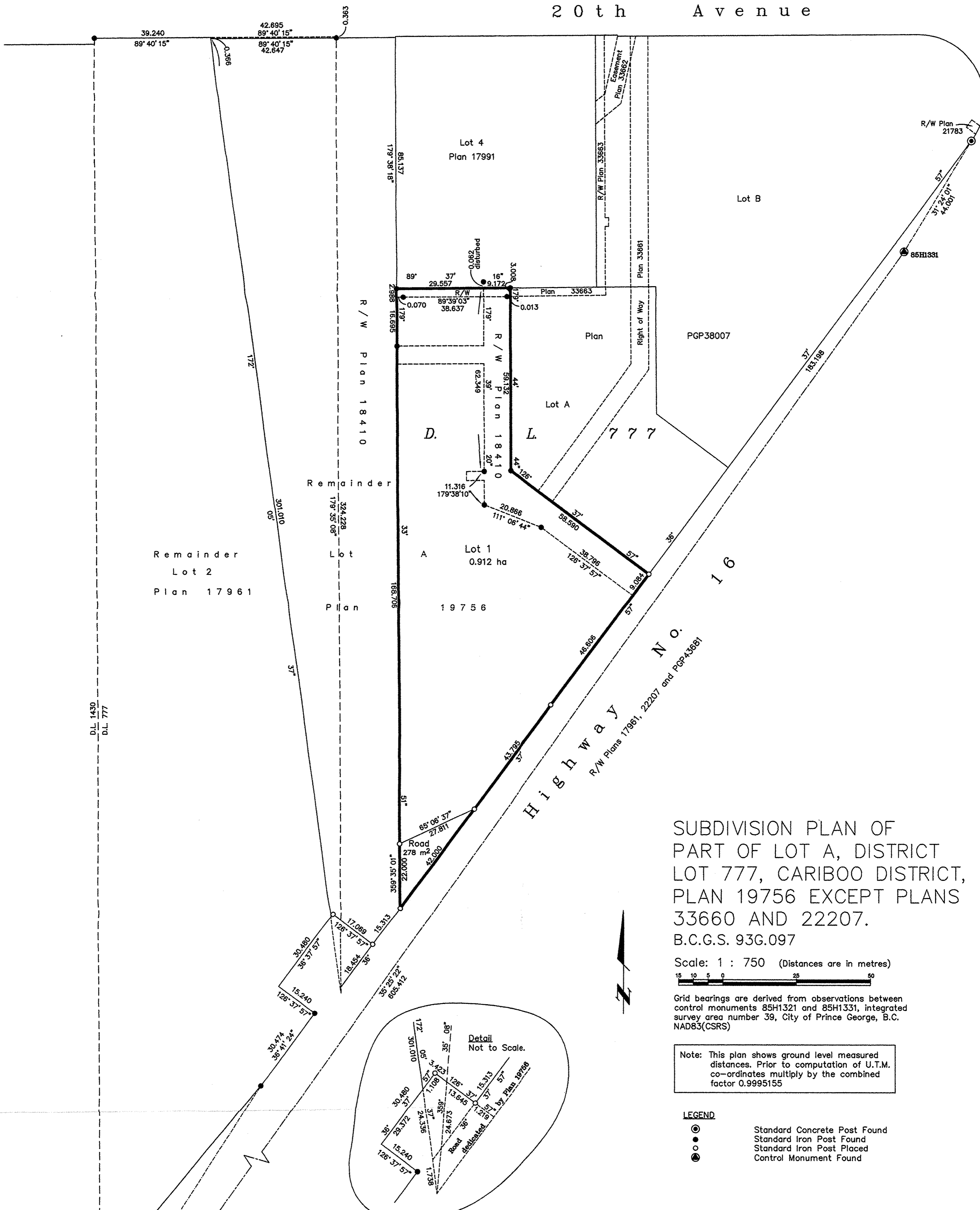


REGISTRAR

20th Avenue



SUBDIVISION PLAN OF PART OF LOT A, DISTRICT LOT 777, CARIBOO DISTRICT, PLAN 19756 EXCEPT PLANS 33660 AND 22207. B.C.G.S. 93G.097

Scale: 1 : 750 (Distances are in metres)

Grid bearings are derived from observations between control monuments 85H1321 and 85H1331, integrated survey area number 39, City of Prince George, B.C. NAD83(CSRS)

Note: This plan shows ground level measured distances. Prior to computation of U.T.M. co-ordinates multiply by the combined factor 0.9995155

- LEGEND**
- Standard Concrete Post Found
  - Standard Iron Post Found
  - Standard Iron Post Placed
  - Control Monument Found

I, Gordon Kilbride, a British Columbia Land Surveyor, of Prince George, in British Columbia, certify that I was present at and personally superintended the survey represented by this plan, and that the survey and plan are correct. The field survey was completed on the 6th day of February, 2006. The plan was completed and checked, and the checklist filed under #45393, on the 8th day of March, 2006.

*Gordon Kilbride*  
Gordon Kilbride, B.C.L.S.

Approved under the Land Title Act this 21<sup>st</sup> day of July, 2006

*[Signature]*  
Approving Officer  
Ministry of Transportation

File No. M05 02-19-16036  
Approved under the Land Title Act this 10<sup>th</sup> day of August, 2006

This plan lies within the Fraser-Fort George Regional District.

Owner: City of Prince George

*[Signature]*  
Authorized Signatory  
Jan Wells  
Print Name

Authorizing Signatory  
Print Name

*[Signature]*  
Witness to Sign  
Brenda Sieben  
Print Name

1100 Patricia Boulevard  
Prince George, BC V2L 3V9  
Address

85H1321