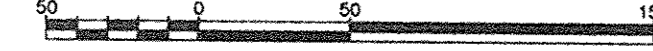


SUBDIVISION PLAN OF PART OF BLOCK A, DISTRICT LOTS 4041, 4377 AND 7644, CARIBOO DISTRICT EXCEPT: FIRSTLY; PART SUBDIVIDED BY PLAN PGP43880, SECONDLY; PART SUBDIVIDED BY PGP43968, THIRDLY; PART SUBDIVIDED BY BCP18897, FOURTHLY; PART SUBDIVIDED BY PLAN BCP20570.

B.C.G.S. 93G.097

Scale: 1 : 2500 (Distances are in metres)



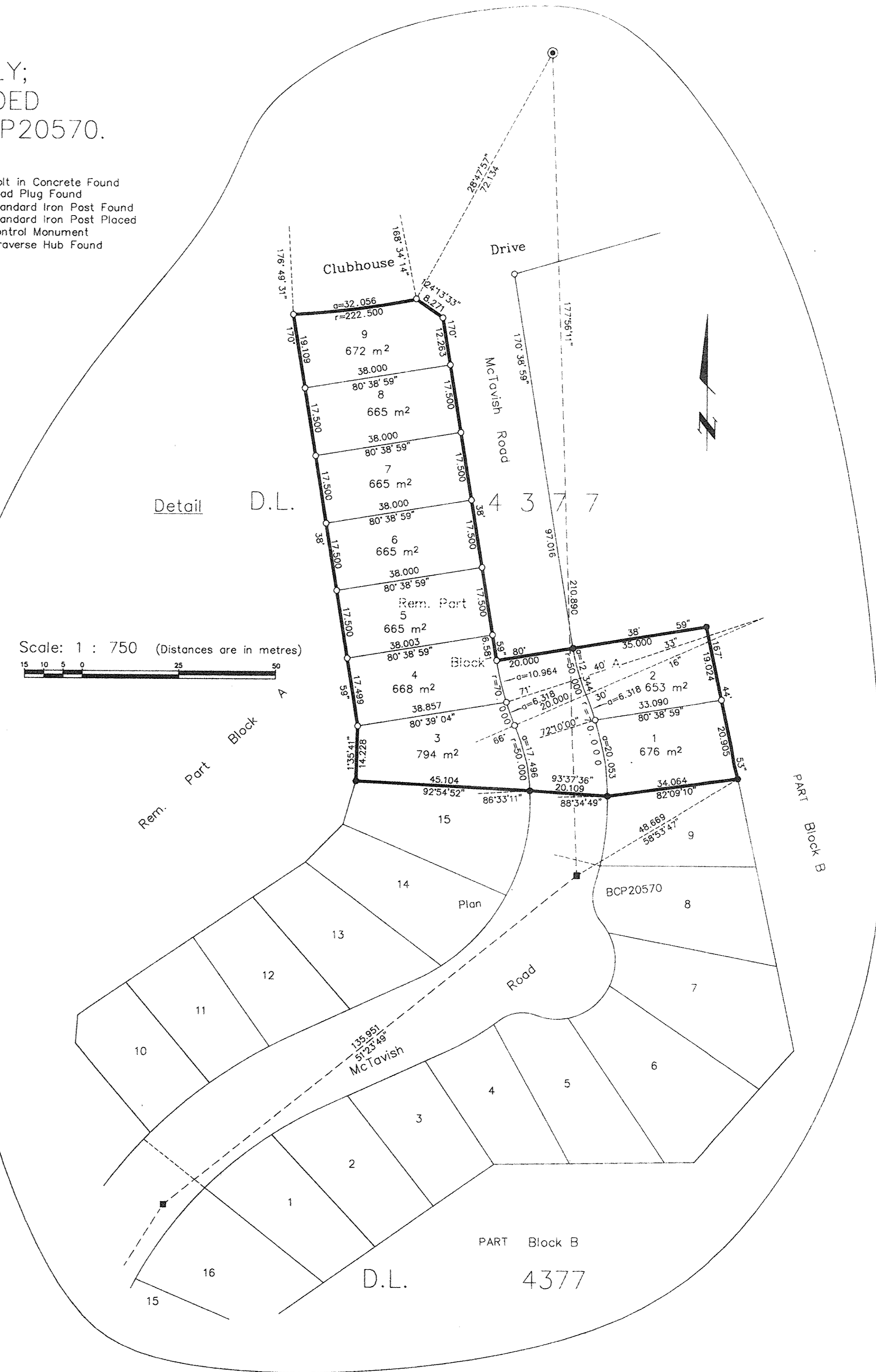
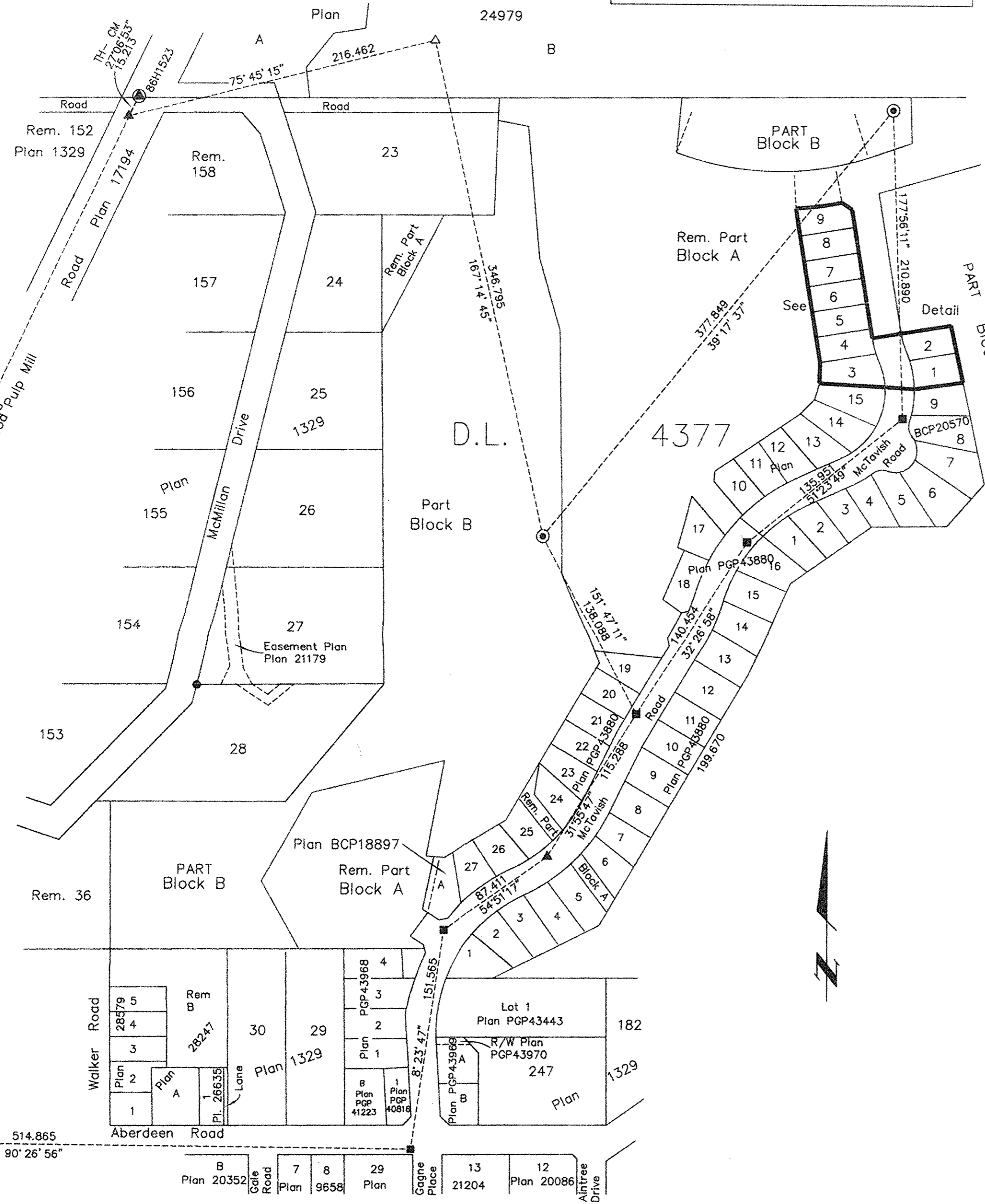
Grid bearings are derived from observations between control monuments 86H1523 and 86H1553, integrated survey area number 39, City of Prince George, B.C.

Note: This plan shows ground level measured distances. Prior to computation of U.T.M. co-ordinates multiply by the combined factor 0.999500

LEGEND

- Bolt in Concrete Found
- Lead Plug Found
- Standard Iron Post Found
- Standard Iron Post Placed
- ▲ Control Monument
- ▲ Traverse Hub Found

Bolt in Concrete Found
Lead Plug Found
Standard Iron Post Found
Standard Iron Post Placed
Control Monument
Traverse Hub Found



PLAN NO. BCP 25435

Deposited in the Land Title Office at New Westminster this 17 day of Aug 2006.

REGISTRAR BA311700

Owner: Aberdeen Glen Developments Ltd.
Inc. No. 487968
Mike Church
Authorized Signatory
MIKE CHURCH
Print Name
Dale Keown
Witness
DALE KEOWN
Print Name
185 Quebec Street
Prince George V2L 1W1
BC Land Surveyor
Occupation

Approved under the Land Title Act this 7 day of July 2006
Mike Church
Approving Officer
City of Prince George

I, Dale Keown, a British Columbia Land Surveyor, of Prince George, in British Columbia, certify that I was present at and personally supervised the survey represented by this plan, and that the survey and plan are correct. The field survey was completed on the 12th day of April, 2006. The plan was completed and checked, and the checklist filed under #48150, on the 8th day of May, 2006.

Dale Keown
Dale Keown, B.C.L.S.

This plan lies within the Fraser-Fort George Regional District.

KILBRIDE LAND SURVEYING LTD.
British Columbia Land Surveyors
Prince George, B.C.
Ph: (250) 562-1196 Fax: 562-3656
F.B.- RA D.L.- 4377 File No. -040167S1