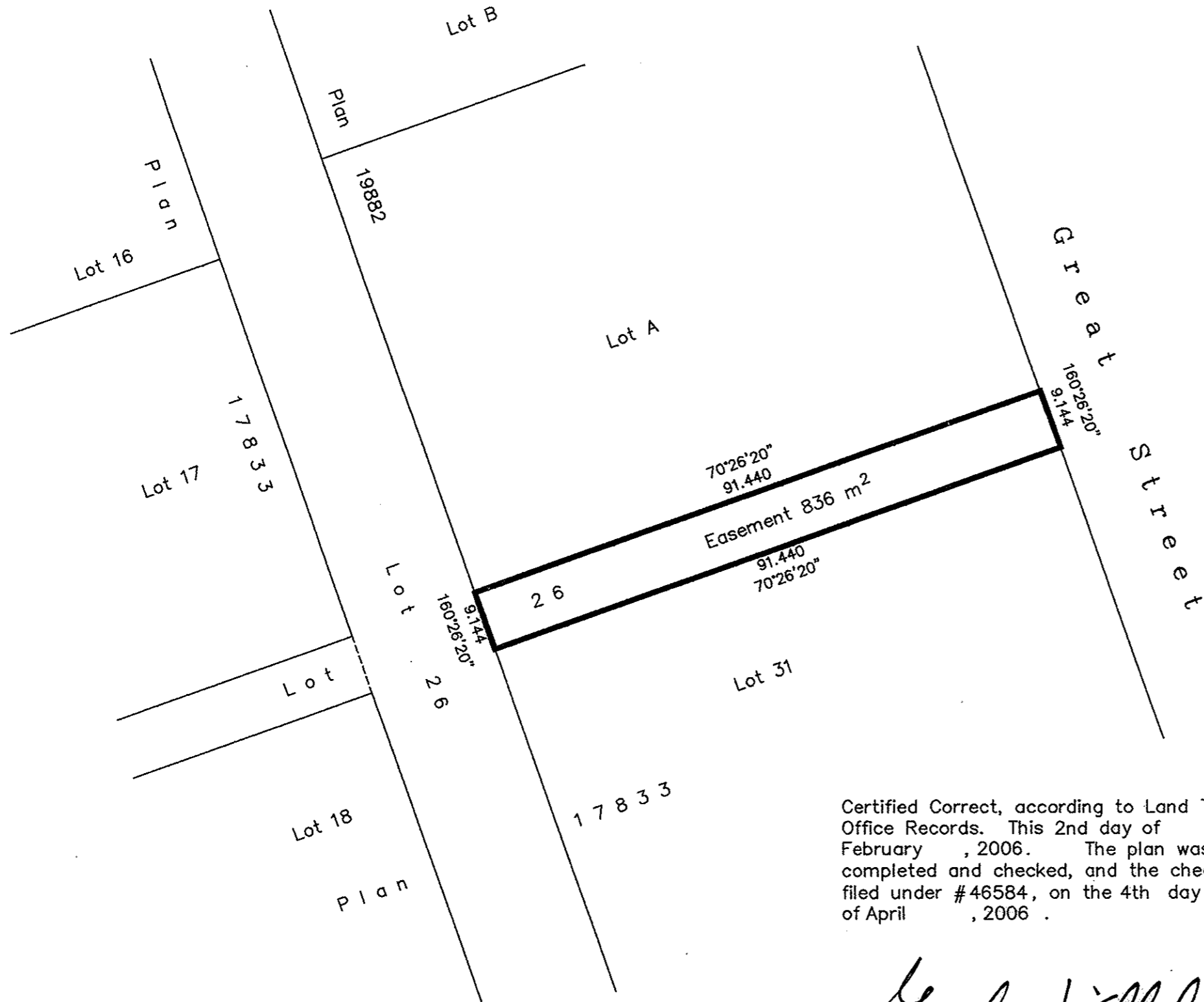


PLAN NO. BCP 25110

Deposited in the Land Title Office at New Westminster this 28th day of July 2006.

REGISTRAR *BA407460*



EXPLANATORY PLAN OF
 EASEMENT OVER PART OF
 LOT 26, DISTRICT LOT 745,
 CARIBOO DISTRICT,
 PLAN 17833.
 Pursuant to Section 99
 of the Land Title Act.
 B.C.G.S. 93G.087

Scale: 1 : 750 (Distances are in metres)

Bearings are astronomic, derived from Plan 17833

Certified Correct, according to Land Title Office Records. This 2nd day of February, 2006. The plan was completed and checked, and the checklist filed under #46584, on the 4th day of April, 2006.

Gordon Kilbride
 Gordon Kilbride, B.C.L.S.

This plan lies within the Fraser-Fort George Regional District.

KILBRIDE LAND SURVEYING LTD. British Columbia Land Surveyors Prince George, B.C.		
Ph: (250) 562-1196 Fax: 562-3656		
F.B.-	D.L.- 745	File No. -050516