

REFERENCE PLAN ~~OF PART~~ OF DISTRICT LOT 2159,
 CARIBOO DISTRICT, EXCEPT NORTH OF THE
 SOUTH BOUNDARY OF DISTRICT LOT 2094
 AND PLAN 9235.

PLAN NO. BCP 24823

Deposited in the Land Title Office at New
 Westminster this 12 day of July, 2006

[Signature]
 REGISTRAR

BA114528

Pursuant to Section 100(1)(a) of the
 Land Title Act.

B.C.G.S. 93G.087

Scale: 1: 5000 (Distances are in metres)



Bearings are astronomic, derived from
 Plan BCP _____ and PGP36222.

Bearings to BTs are magnetic.

LEGEND

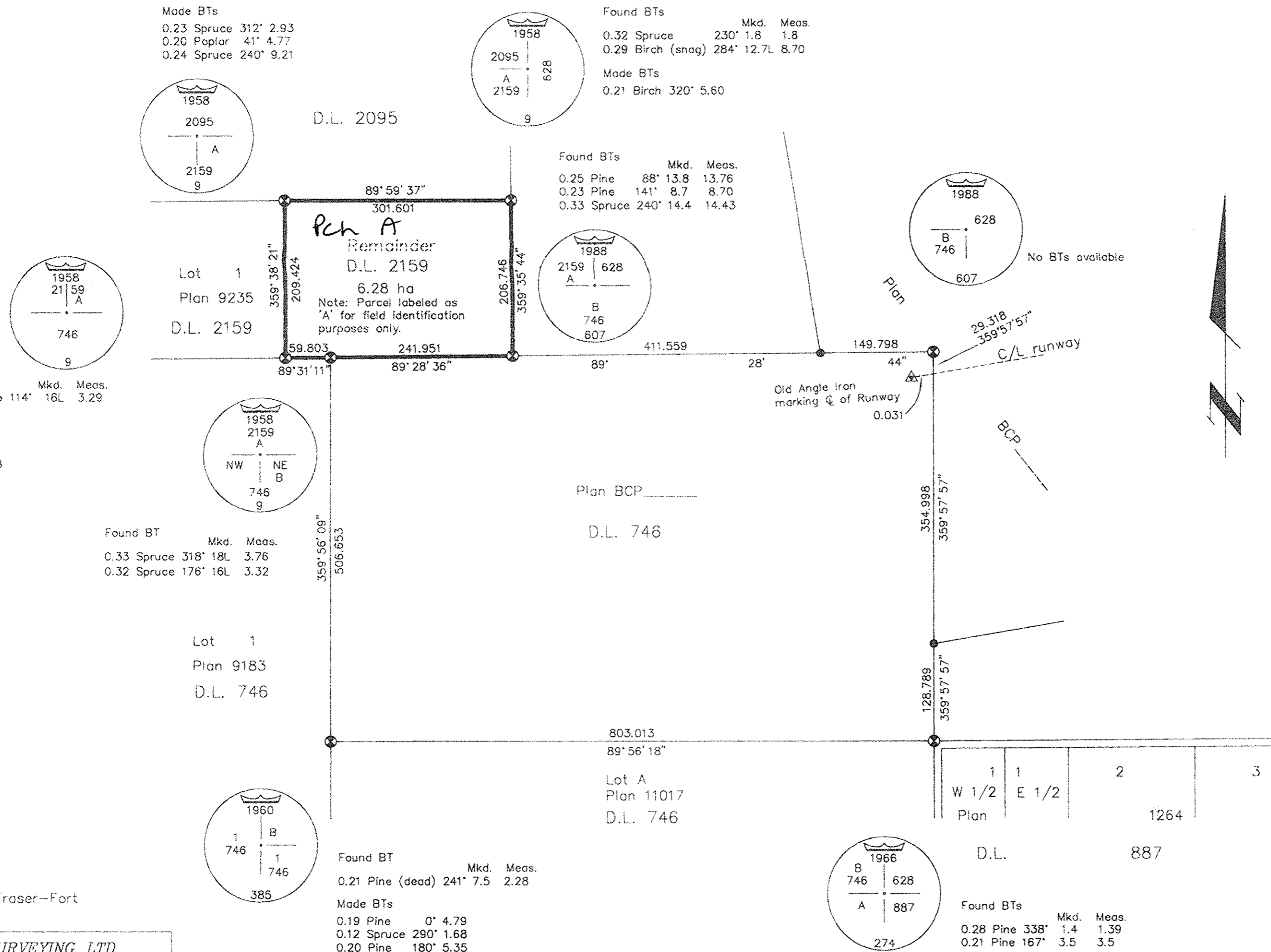
- ⊗ Standard Capped Post Found
- △ Old Angle Iron Found
- Standard Iron Post Found

Made BTs
 0.23 Spruce 312' 2.93
 0.20 Poplar 41' 4.77
 0.24 Spruce 240' 9.21

Found BTs
 0.32 Spruce 230' 1.8 1.8
 0.29 Birch (snag) 284' 12.7L 8.70

Made BTs
 0.21 Birch 320' 5.60

Found BTs
 0.25 Pine 88' 13.8 13.76
 0.23 Pine 141' 8.7 8.70
 0.33 Spruce 240' 14.4 14.43



I, Dale Keown, a British Columbia Land Surveyor, of
 Prince George, in British Columbia, certify that I was
 present at and personally superintended the survey
 represented by this plan, and that the survey and plan
 are correct. The field survey was completed on the 24th day
 of April, 2006. The plan was completed and
 checked, and the checklist filed under #49887, on the
 13th day of June, 2006.

[Signature]
 Dale Keown, B.C.L.S.

Dale Keown, B.C.L.S.

I hereby certify that this is the
 Official Plan of the lands shown
 outlined hereon.

Original signed by
Jim Sutherland
 FOR Surveyor General JUL - 5 2006
 Victoria, B.C.

This plan lies within the Fraser-Fort
 George Regional District.

KILBRIDE LAND SURVEYING LTD.
 British Columbia Land Surveyors
 Prince George, B.C.
 Ph: (250) 562-1196 Fax: 562-3656

F.B.- CC9\16 D.L.- 746 File No. -060092A

SID 807090