

Deposited in the Land Title Office at New Westminster this 7 day of July 2006.

*J. S. Marshall*  
REGISTRAR

BA 399640-  
BA 399641

SUBDIVISION PLAN OF PART OF LOT A, DISTRICT LOTS 482, 10221 AND 10222, CARIBOO DISTRICT, PLAN 10836, EXCEPT PLANS PGP35621 AND PGP35622.

B.C.G.S. 93G.096

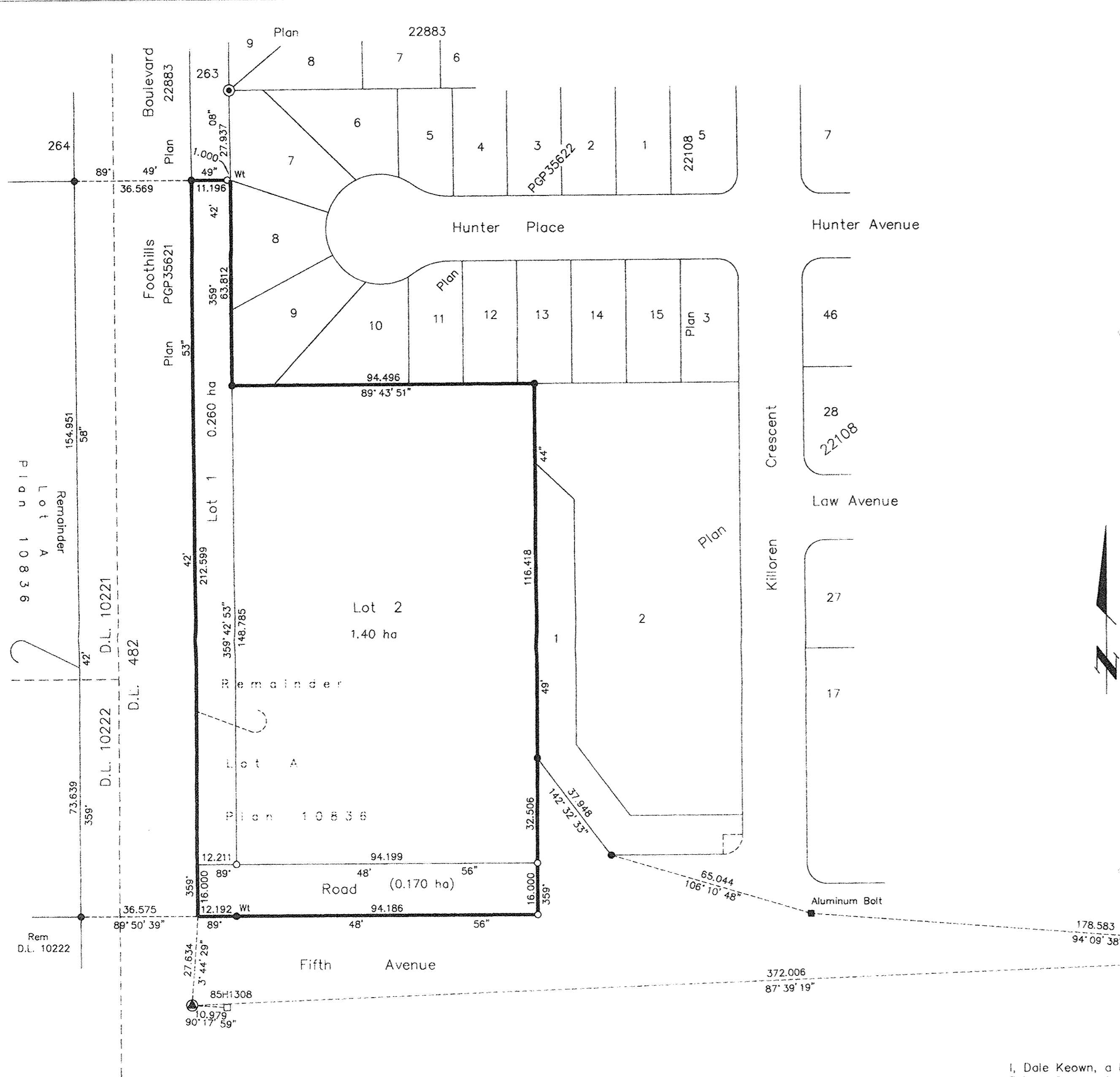
Scale: 1 : 1000 (Distances are in metres)

Grid bearings are derived from observations between control monuments 85H1200 and 85H1308, integrated survey area number 39, City of Prince George, B.C. NAD83(CSRS)

Note: This plan shows ground level measured distances. Prior to computation of U.T.M. co-ordinates multiply by the combined factor 0.9995079

LEGEND

- Standard Concrete Post Found
- Non Standard Lead Plug Found
- Standard Lead Plug Placed
- Standard Iron Post Found
- Standard Iron Post Placed
- ⊙ Control Monument Found



Owner: City of Prince George

*Jan Walls*  
Authorized Signatory

Print Name

*Jan Radloff*  
Authorized Signatory

Print Name

*B. Sieben*  
Witness to both

Print Name

1100 Patricia Boulevard

Address

Property Administrator

Postal Code

Occupation

Approved under the Land Title Act this 7 day of July 2006

*[Signature]*  
Approving Officer

City of Prince George

I, Dale Keown, a British Columbia Land Surveyor, of Prince George, in British Columbia, certify that I was present at and personally supervised the survey represented by this plan, and that the survey and plan are correct. The field survey was completed on the 15th day of August, 2005. The plan was completed and checked, and the checklist filed under #36204, on the 23rd day of August, 2005.

*[Signature]*  
Dale Keown, B.C.L.S.

This plan lies within the Fraser-Fort George Regional District.

KILBRIDE LAND SURVEYING LTD.  
British Columbia Land Surveyors  
Prince George, B.C.  
Ph: (250) 562-1196 Fax: 562-3656