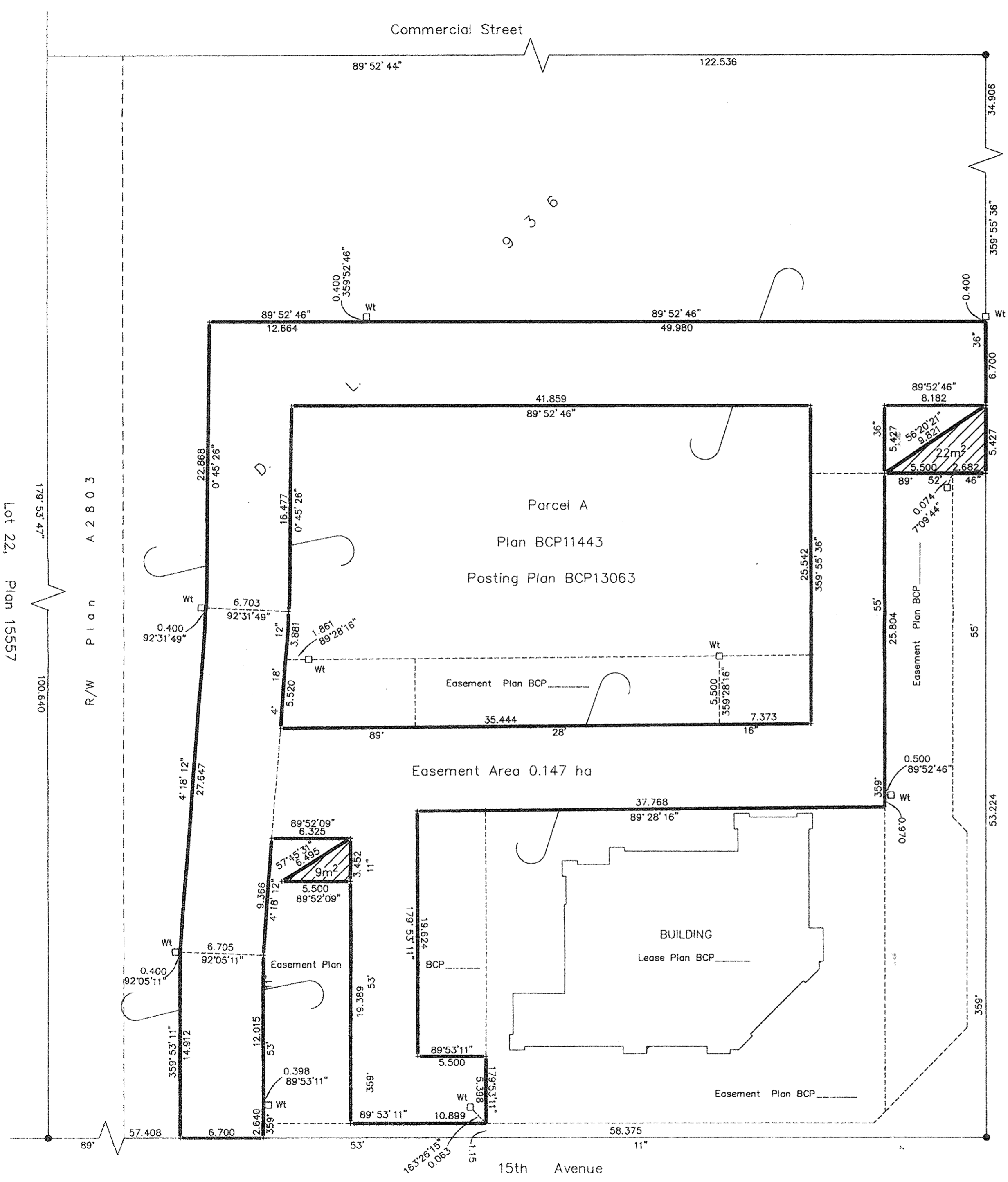


Deposited in the Land Title Office at New Westminster this 5 day of July 2006.

A MacDonald
REGISTRAR
BAS24399



West Central Street

REFERENCE PLAN OF EASEMENT
WITHIN PART OF PARCEL A,
DISTRICT LOT 936, CARIBOO
DISTRICT, PLAN BCP11443.
Pursuant to Section 99
of the Land Title Act.
B.C.G.S. 93G.097

Scale: 1 : 250 (Distances are in metres)

Bearings are astronomic, derived from Plan BCP13063.

LEGEND

- Standard Iron Post Found
- Lead Plug Placed
- + Unmarked Measured Point - UTP

Book of Reference

- Total Area 31 m²
- Total Area 0.147 ha

I, Dale Keown, a British Columbia Land Surveyor, of Prince George, in British Columbia, certify that I was present at and personally superintended the survey represented by this plan, and that the survey and plan are correct. The field survey was completed on the 19th day of October, 2005. The plan was completed and checked, and the checklist filed under #39647, on the 1st day of November, 2005.

Dale Keown
Dale Keown, B.C.L.S.

This plan lies within the Fraser-Fort George Regional District.

KILBRIDE LAND SURVEYING LTD. British Columbia Land Surveyors Prince George, B.C. Ph: (250) 562-1196 Fax: 562-3656		
F.B.- XR 13	D.L.- 936	File No. - 050424AE