

EXPLANATORY PLAN OF EASEMENT
THROUGH A PORTION OF
LOTS 26 TO 29, DISTRICT LOT 1599,
CARIBOO DISTRICT, PLAN BCP14136.
B.C.G.S. 93G.086

PLAN NO. BCP 24661

Deposited in the Land Title Office at New
Westminster this 30 day of JUNE 2006.

Pursuant to Section 99(1)(e) of the
Land Title Act.

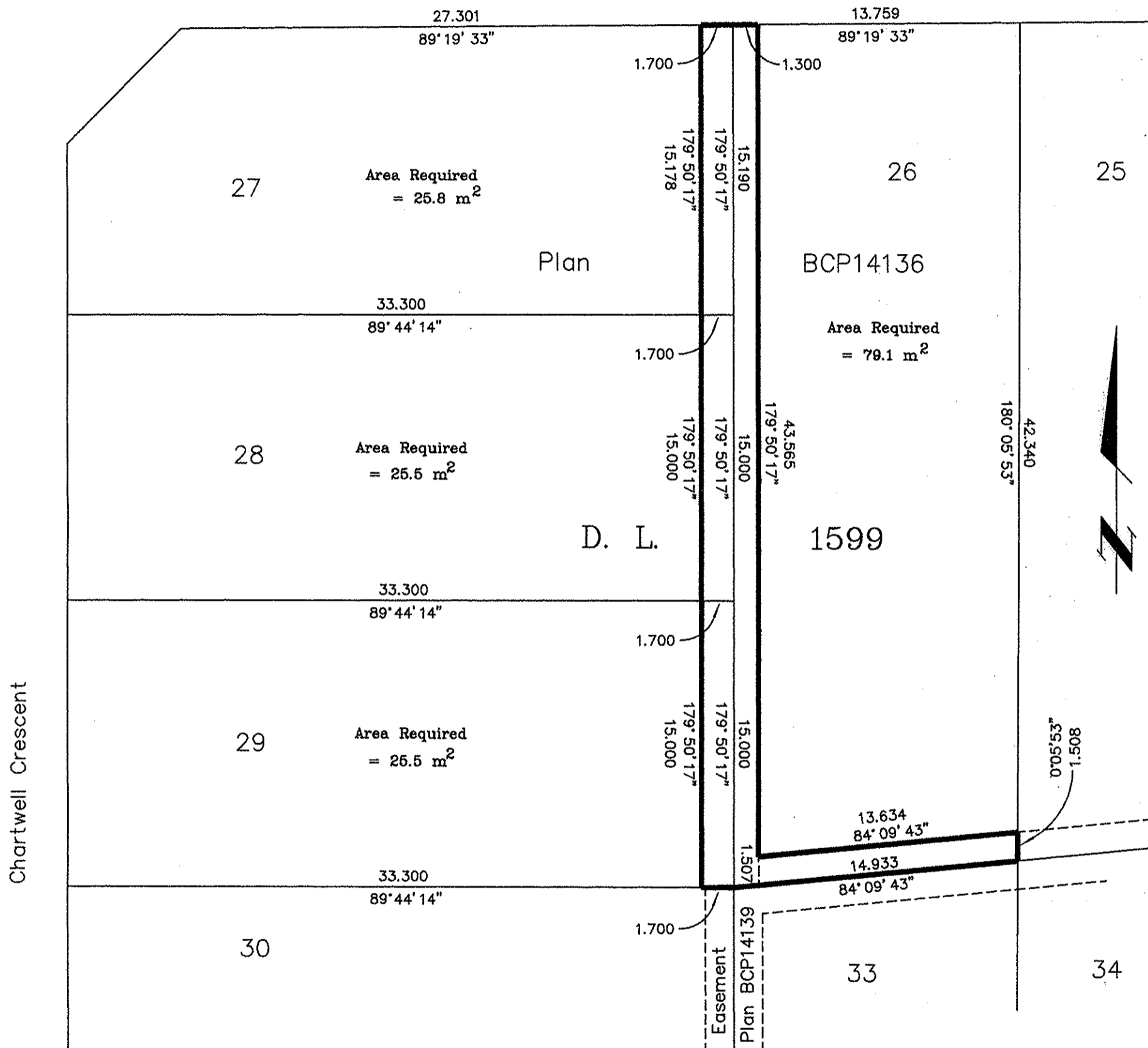
IAN MACDONALD
Deputy REGISTRAR

Scale: 1 : 250 (Distances are in metres)



Bearings are astronomic, derived from
BCP14139


Chartwell Crescent



Certified Correct, according to Land
Title Office Records, this 25 day of
May, 2006. The plan was
completed and checked, and the checklist
filed under # 48978, on the 25 day
of May, 2006.

Gordon Kilbride
Gordon Kilbride, B.C.L.S.

This plan lies within the Fraser-Fort
George Regional District.

 McElhanney McElhanney Associates Land Surveying Ltd. Prince George, B.C. Ph: (250) 562-1196 Fax: 562-3656		
F.B.-	D.L.- 1599	File No. -05306-0