

**REFERENCE PLAN OF EASEMENT OVER PART OF  
LOT 2, D.L. 343, CARIBOO DISTRICT, PLAN PGP40122.**

B.C.G.S. 936.097

THIS PLAN LIES WITHIN INTEGRATED SURVEY AREA No. 39, CITY OF PRINCE GEORGE.  
PURSUANT TO SECTION 99 (1) (e) OF THE LAND TITLE ACT.

**PLAN BCP** 24527  
BA392763  
DEPOSITED IN THE LAND TITLE OFFICE  
AT NEW WESTMINSTER, B.C.  
THIS 22 DAY OF June 2006

REGISTRAR

SCALE 1 : 250



ALL DISTANCES ARE SHOWN IN METRES AND DECIMALS THEREOF, UNLESS OTHERWISE INDICATED.

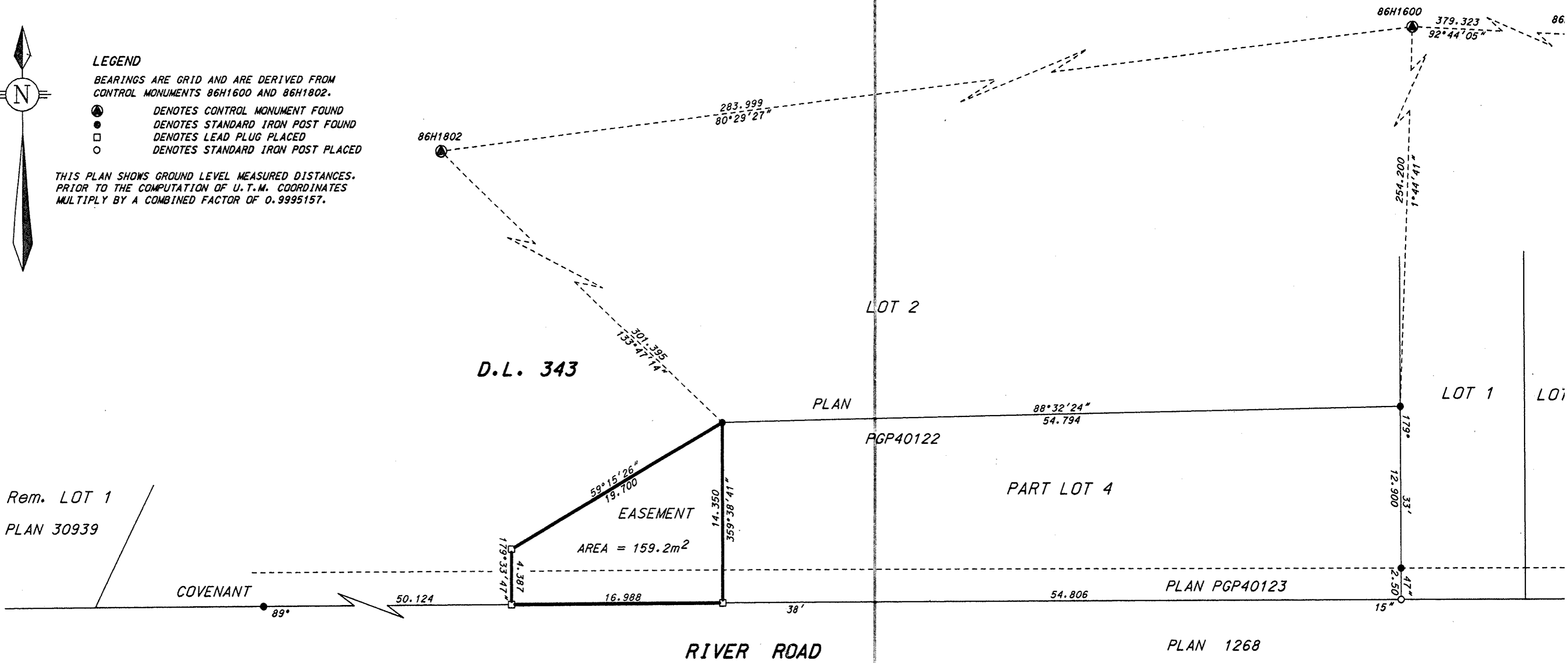


**LEGEND**

BEARINGS ARE GRID AND ARE DERIVED FROM CONTROL MONUMENTS 86H1600 AND 86H1802.

- DENOTES CONTROL MONUMENT FOUND
- DENOTES STANDARD IRON POST FOUND
- DENOTES LEAD PLUG PLACED
- DENOTES STANDARD IRON POST PLACED

THIS PLAN SHOWS GROUND LEVEL MEASURED DISTANCES. PRIOR TO THE COMPUTATION OF U.T.M. COORDINATES MULTIPLY BY A COMBINED FACTOR OF 0.9995157.



I, M. C. HARRIS A BRITISH COLUMBIA LAND SURVEYOR, OF CAMPBELL RIVER, IN BRITISH COLUMBIA, CERTIFY THAT I WAS PRESENT AT AND PERSONALLY SUPERINTENDED THE SURVEY REPRESENTED BY THIS PLAN, AND THAT THE SURVEY AND PLAN ARE CORRECT. THE FIELD SURVEY WAS COMPLETED ON THE 17th DAY OF APRIL, 2006. THE PLAN WAS COMPLETED AND CHECKED, AND THE CHECKLIST FILED UNDER # 47348, ON THE 21st DAY OF APRIL, 2006.

*M. C. Harris* B.C.L.S.

THIS PLAN LIES WITHIN THE REGIONAL DISTRICT OF FRASER - FORT GEORGE.

**McELHANNEY ASSOCIATE  
LAND SURVEYING LTD.**  
PROFESSIONAL LAND SURVEY  
1371B CEDAR STREET  
CAMPBELL RIVER, B.C., V9W-2W6  
TEL. 287-7799 FAX 287-7662

FILE 2341-01168-1 DGN 1168