

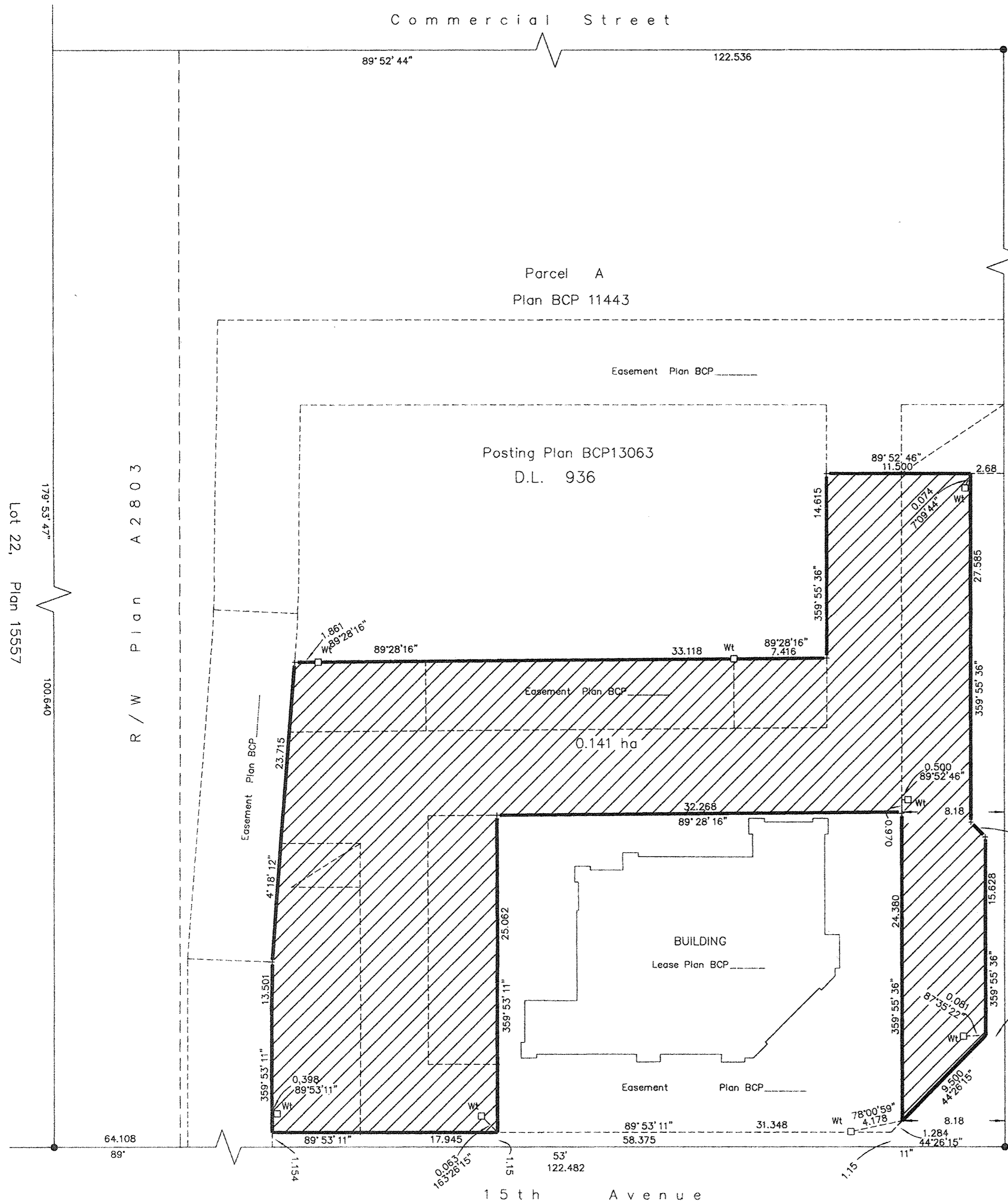
Commercial Street

PLAN NO. BCP 24693

Deposited in the Land Title Office at New Westminster this 5 day of July 2006.

D. Ward
REGISTRAR

BA524401



REFERENCE PLAN FOR EASEMENT
 WITHIN PART OF PARCEL A,
 DISTRICT LOT 936, CARIBOO
 DISTRICT, PLAN BCP11443.
 Pursuant to Section 99
 of the Land Title Act.
 B.C.G.S. 93G.097

Scale: 1 : 250 (Distances are in metres)

Bearings are astronomic, derived from Plan BCP13063.

LEGEND

- Lead Plug Placed
- Standard Iron Post Found
- + Unmarked Measured Point - UTP

I, Dale Keown, a British Columbia Land Surveyor, of Prince George, in British Columbia, certify that I was present at and personally superintended the survey represented by this plan, and that the survey and plan are correct. The field survey was completed on the 19th day of October, 2005. The plan was completed and checked, and the checklist filed under #29650, on the 1st day of November, 2005.

Dale Keown
 Dale Keown, B.C.L.S.

This plan lies within the Fraser-Fort George Regional District.

KILBRIDE LAND SURVEYING LTD.
 British Columbia Land Surveyors
 Prince George, B.C.
 Ph: (250) 562-1196 Fax: 562-3656

F.B.- XR 13	D.L.- 936	File No. - 050424NB
-------------	-----------	---------------------