

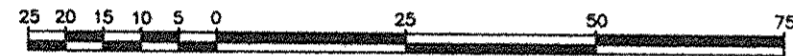
Deposited in the Land Title Office at New Westminster this 16 day of June 2006.

REFERENCE PLAN OF STATUTORY
RIGHT OF WAY OVER PART OF
PARCEL 1, DISTRICT LOT 343,
CARIBOO DISTRICT, PLAN BCP 24383
Pursuant to Section 113
of the Land Title Act.
B.C.G.S. 93G.097

Grid bearings are derived from observations between control monuments 85H1331 and 85H1321, integrated survey area number 39, City of Prince George, B.C. NAD83(CSRS)

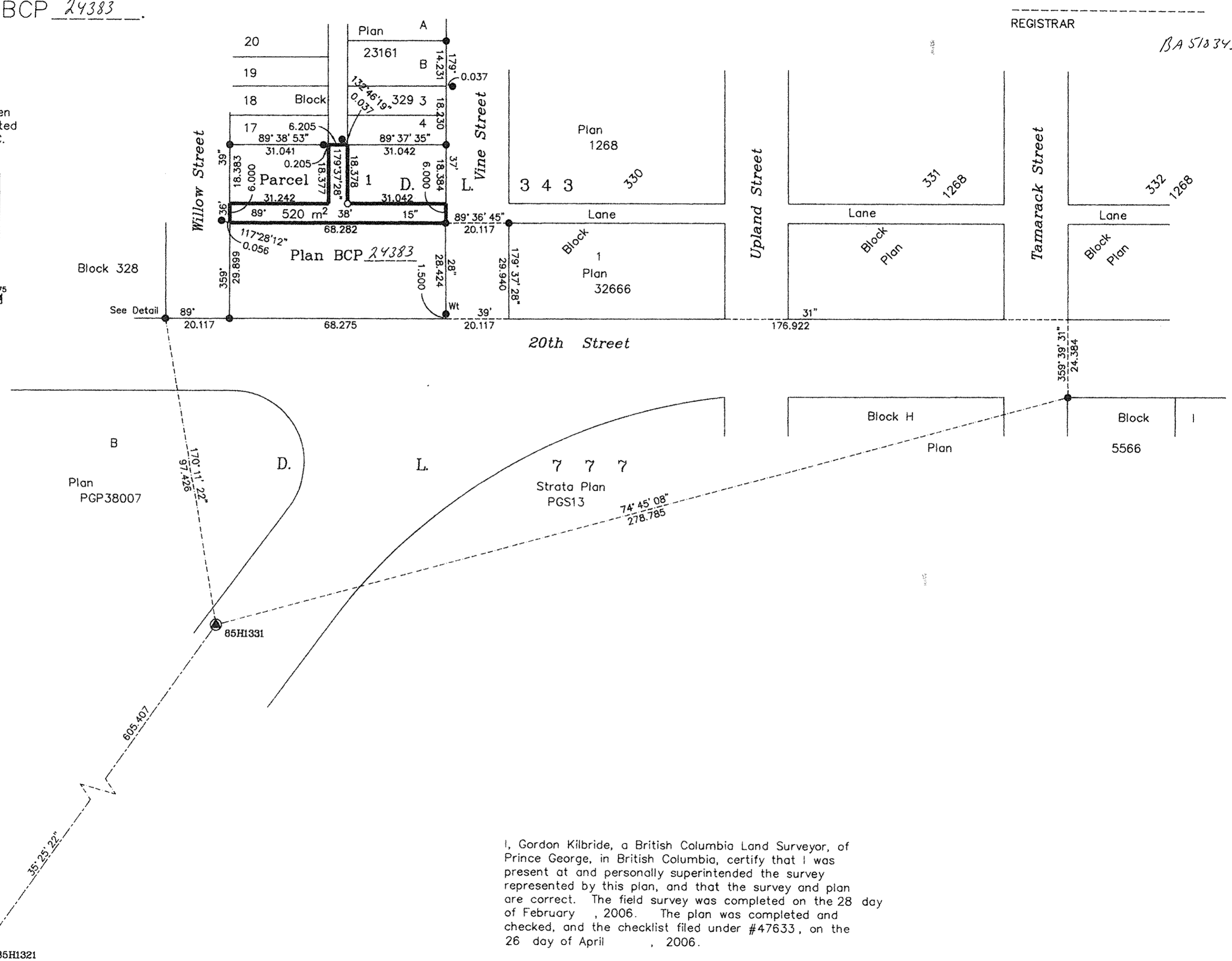
Note: This plan shows ground level measured distances. Prior to computation of U.T.M. co-ordinates multiply by the combined factor 0.9995151

Scale: 1 : 1000 (Distances are in metres)



LEGEND

- Standard Iron Post Found
- Standard Iron Post Placed
- ⊙ Control Monument Found



REGISTRAR

BA 513343

I, Gordon Kilbride, a British Columbia Land Surveyor, of Prince George, in British Columbia, certify that I was present at and personally supervised the survey represented by this plan, and that the survey and plan are correct. The field survey was completed on the 28 day of February, 2006. The plan was completed and checked, and the checklist filed under #47633, on the 26 day of April, 2006.

Gordon Kilbride
Gordon Kilbride, B.C.L.S.

This plan lies within the Fraser-Fort George Regional District.

KILBRIDE LAND SURVEYING LTD.
British Columbia Land Surveyors
Prince George, B.C.
Ph: (250) 562-1196 Fax: 562-3656

F.B.- RA D.L.- 343(329) File No. - 050380RW