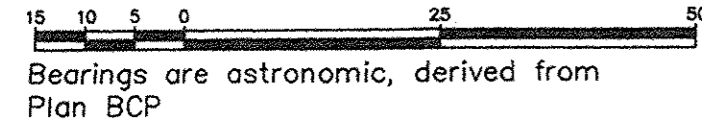


REFERENCE PLAN OF RESTRICTIVE COVENANT WITHIN LOTS 8, 9, 10, 11, 17, 18, 19, 20, 25, 26, 27, 28, 29, 30, 31, 32, 33, 34, 35, 36, 37 AND 38, DISTRICT LOT 2013, CARIBOO DISTRICT, PLAN BCP 24365.

Pursuant to Section 99 of the Land Title Act.

B.C.G.S. 93G.086

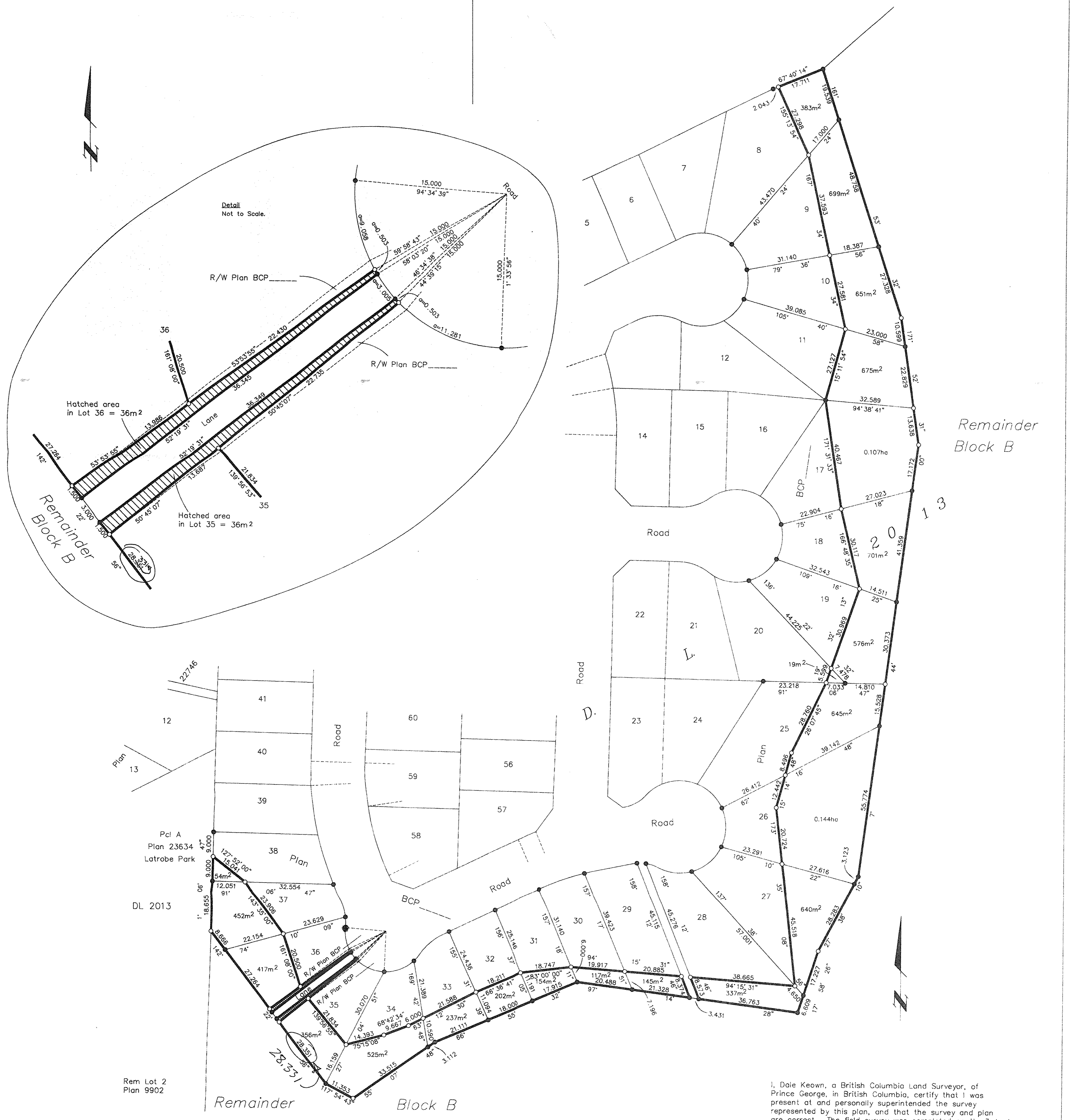
Scale: 1 : 750 (Distances are in metres)



Bearings are astronomic, derived from Plan BCP

LEGEND

- Standard Iron Post Found
- Standard Iron Post Placed



I, Dale Keown, a British Columbia Land Surveyor, of Prince George, in British Columbia, certify that I was present at and personally superintended the survey represented by this plan, and that the survey and plan are correct. The field survey was completed on the 3rd day of May, 2006. The plan was completed and checked, and the checklist filed under #47990, on the 4th day of May, 2006.

*Dale Keown*  
Dale Keown, B.C.L.S.

This plan lies within the Fraser-Fort George Regional District.

KILBRIDE LAND SURVEYING LTD. British Columbia Land Surveyors Prince George, B.C. Ph: (250) 562-1196 Fax: 562-3656		
F.B.- XQ 03	D.L.- 2013	File No. - 040318C1