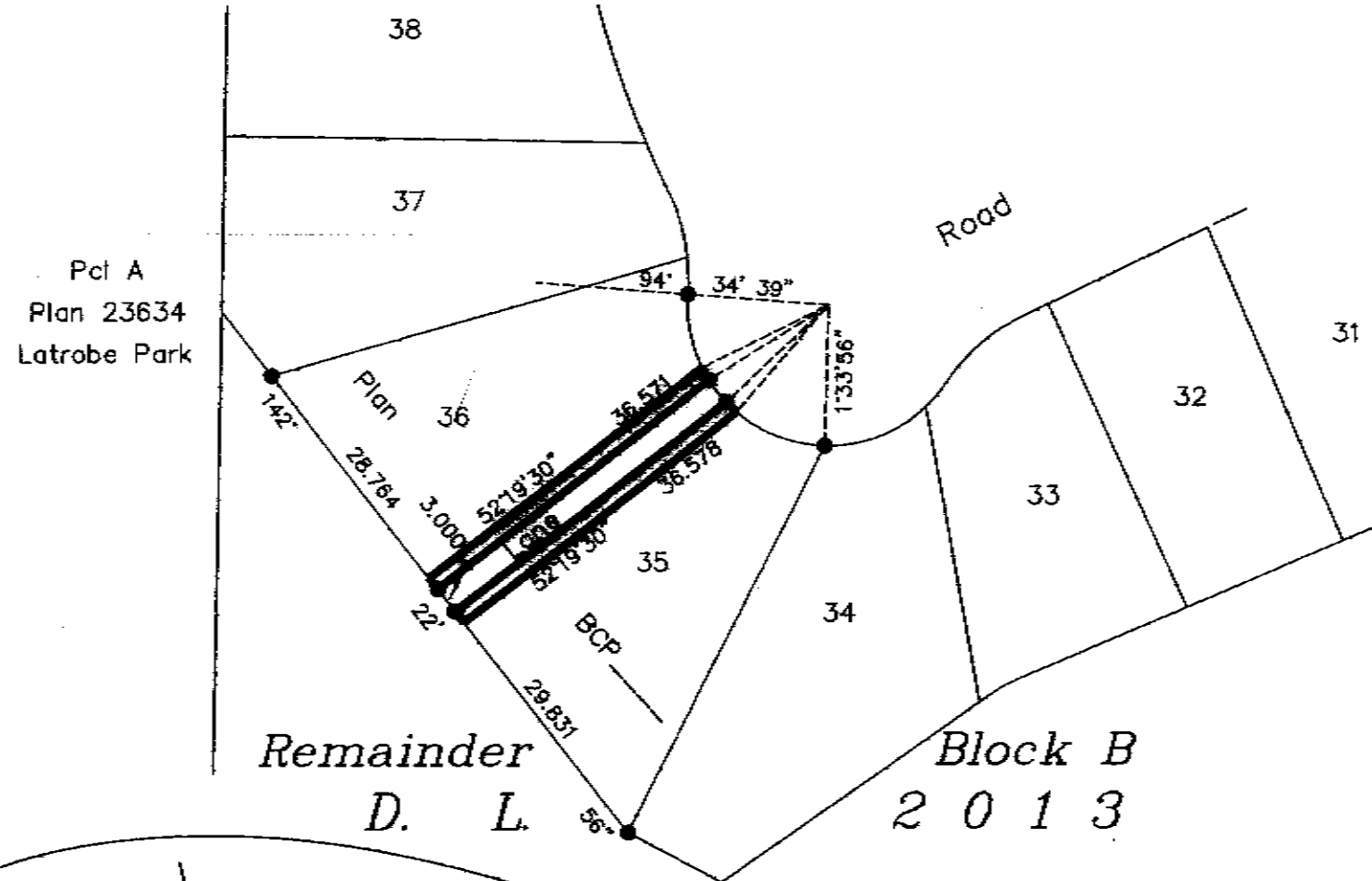


PLAN NO. BCP 24366

Deposited in the Land Title Office at New Westminster this 15 day of JUNE 2006.

BA106404
REGISTRAR



REFERENCE PLAN OF STATUTORY RIGHT OF WAY OVER PART OF LOTS 35 AND 36, DISTRICT LOT 2013, CARIBOO DISTRICT, PLAN BCP_____.

Pursuant to Section 113 of the Land Title Act.

B.C.G.S. 93G.086

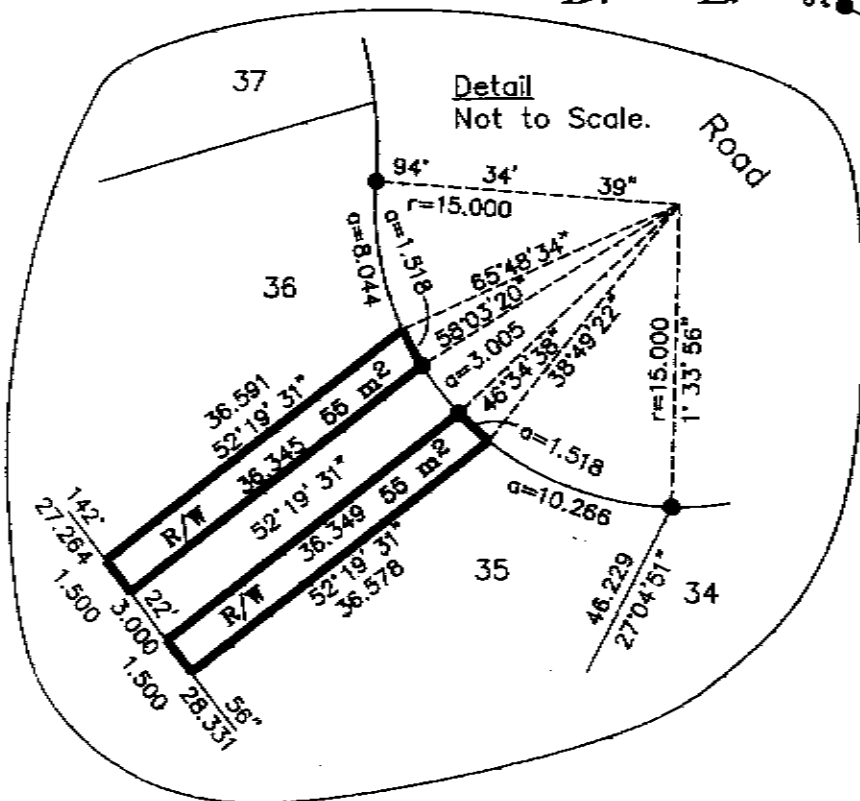
Scale: 1 : 750 (Distances are in metres)



LEGEND

● Standard Iron Post Found

BOOK OF REFERENCE	
DESCRIPTION	AREA
Lot 35, D.L. 2013, Cariboo District, Plan BCP_____	55 m ²
Lot 36, D.L. 2013, Cariboo District, Plan BCP_____	55 m ²



I, Gordon Kilbride, a British Columbia Land Surveyor, of Prince George, in British Columbia, certify that I was present at and personally superintended the survey represented by this plan, and that the survey and plan are correct. The field survey was completed on the 16th day of January, 2006. The plan was completed and checked, and the checklist filed under #43936, on the 1st day of February, 2006.

Gordon Kilbride

Gordon Kilbride, B.C.L.S.

This plan lies within the Fraser-Fort George Regional District.

KILBRIDE LAND SURVEYING LTD.
British Columbia Land Surveyors
Prince George, B.C.
Ph: (250) 562-1196 Fax: 562-3656

F.B.- XQ 04 | D.L.- 2013 | File No. -040318E