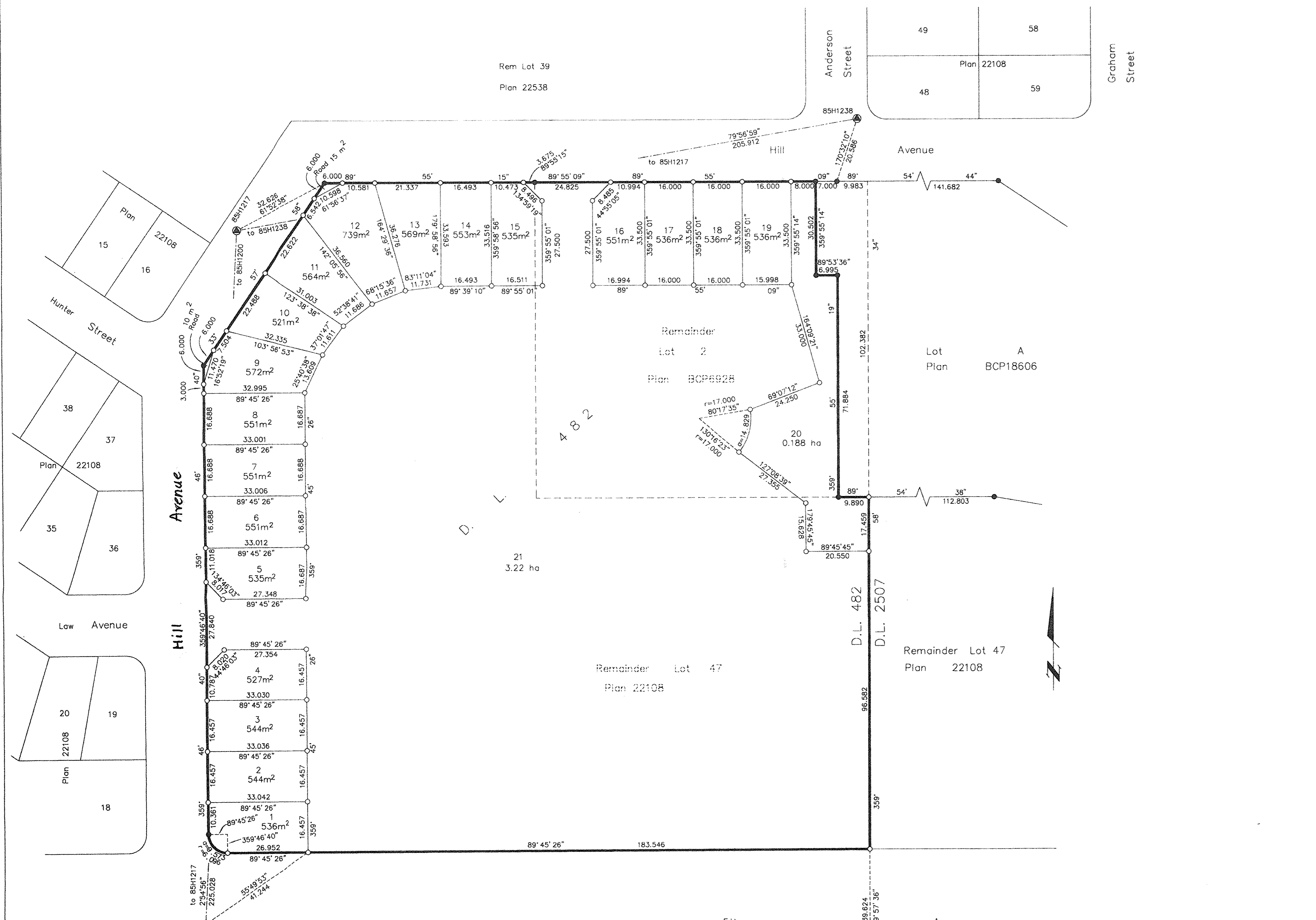


Deposited in the Land Title Office at New Westminster this 15th day of MAY 2006

REGISTRAR
REF. # BA 499707



SUBDIVISION PLAN OF PART OF LOT 47, EXCEPT PART SUBDIVIDED BY PLAN BCP6928, DISTRICT LOTS 482 AND 2507, CARIBOO DISTRICT, PLAN 22108 AND OF LOT 2, EXCEPT PART IN PLAN BCP18606, DISTRICT LOT 482, CARIBOO DISTRICT, PLAN BCP6928.

B.C.G.S. 93G.097
Scale: 1 : 750 (Distances are in metres)

Grid bearings are derived from observations between control monuments 85H1217 and 85H1238, integrated survey area number 39, City of Prince George, B.C. NAD83(CSRS)

Note: This plan shows ground level measured distances. Prior to computation of U.T.M. co-ordinates multiply by the combined factor 0.9995092

- LEGEND
- ⊙ Standard Concrete Post Found
 - Standard Iron Post Found
 - Standard Iron Post Placed
 - ⊗ Control Monument Found

Owner: Mayor Hooper Ltd. City of Prince George
 Authorized Signatory: [Signature]
 Print Name: Colin Kinsley
 Authorized Signatory: [Signature]
 Print Name: John Redloff
 Witness to both: Judy Dix
 Print Name: JUDY DIX
 Address: City Hall
Prince George, BC, V2L3V9
 Occupation: Executive Assistant

I, Dale Keown, a British Columbia Land Surveyor, of Prince George, in British Columbia, certify that I was present at and personally superintended the survey represented by this plan, and that the survey and plan are correct. The field survey was completed on the 27th day of October, 2005. The plan was completed and checked, and the checklist filed under # 39394, on the 27th day of October, 2005.

[Signature]
Dale Keown, B.C.L.S.

This plan lies within the Fraser-Fort George Regional District.

Approved under the Land Title Act this 3rd day of May 2006
[Signature]
 Approving Officer
 City of Prince George

KILBRIDE LAND SURVEYING LTD.
 British Columbia Land Surveyors
 Prince George, B.C.
 Ph: (250) 562-1196 Fax: 562-3656