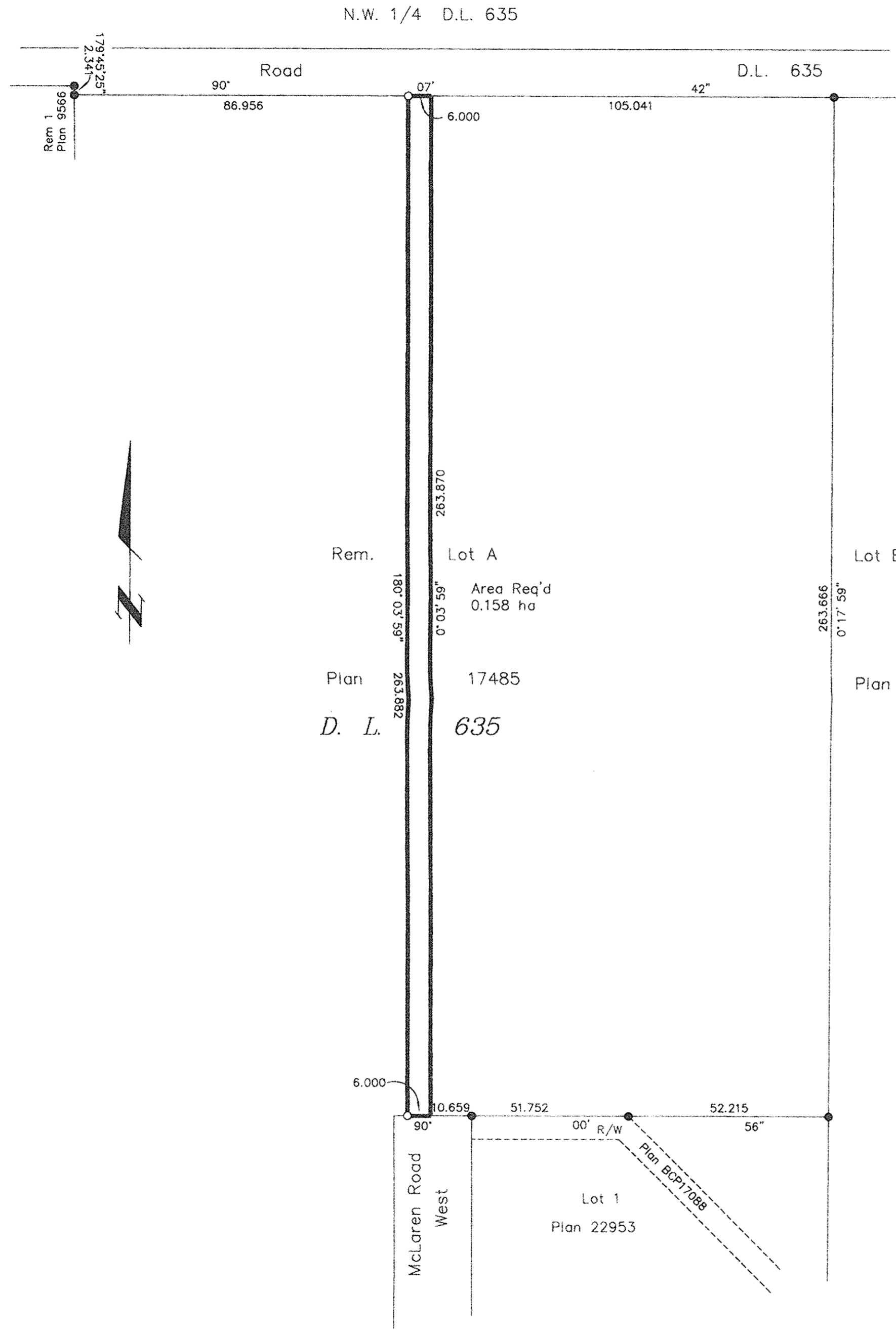


Deposited in the Land Title Office at New Westminster this 4 day of APRIL 2006

BA 275920

Deputy REGISTRAR IAN MACDONALD LG



REFERENCE PLAN OF STATUTORY RIGHT OF WAY OVER PART OF LOT A, DISTRICT LOT 635, CARIBOO DISTRICT PLAN 17485, EXCEPT PLANS 22296 & 22953. Pursuant to Section 113 of the Land Title Act. B.C.G.S. 93G.097

Scale: 1 : 1000 (Distances are in metres)

Bearings are astronomic, derived from Plan BCP17088 - 90°00'56"

LEGEND

- Standard Iron Post Found
- Standard Iron Post Placed

I, Gordon Kilbride, a British Columbia Land Surveyor, of Prince George, in British Columbia, certify that I was present at and personally superintended the survey represented by this plan, and that the survey and plan are correct. The field survey was completed on the 15th day of December, 2005. The plan was completed and checked, and the checklist filed under #42519, on the 16 day of December, 2005.

*Gordon Kilbride*  
Gordon Kilbride, B.C.L.S.

Pursuant to section 43 of the General Survey Instruction Rules, this survey need not be integrated with survey control.

*J. S. [Signature]*  
Surveyor General, Victoria, B.C.  
This 20 day of March, 2006

This plan lies within the Fraser-Fort George Regional District.

KILBRIDE LAND SURVEYING LTD.  
British Columbia Land Surveyors  
Prince George, B.C.  
Ph: (250) 562-1196 Fax: 562-3656

F.B.- XE 55	D.L.- 635	File No. - 040154-2
-------------	-----------	---------------------