

REFERENCE PLAN OF PARCEL A (PLAN 23973),
 DISTRICT LOT 905, CARIBOO DISTRICT, PLAN 1223,
 EXCEPT PLANS 24588 AND 27329.
 Pursuant to Section 100(1)(a) of the Land Title Act.
 B.C.G.S. 93G.086

PLAN NO. BCP 22408

Deposited in the Land Title Office at New
 Westminster this 27th day of Feb 2006.

REGISTRAR BA68824

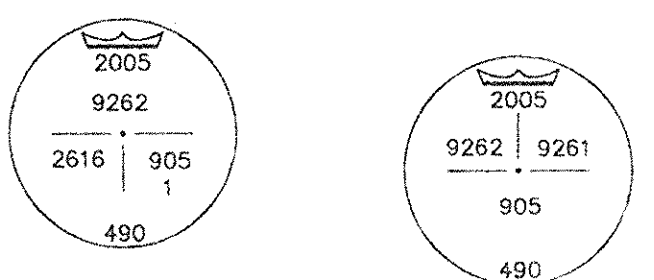
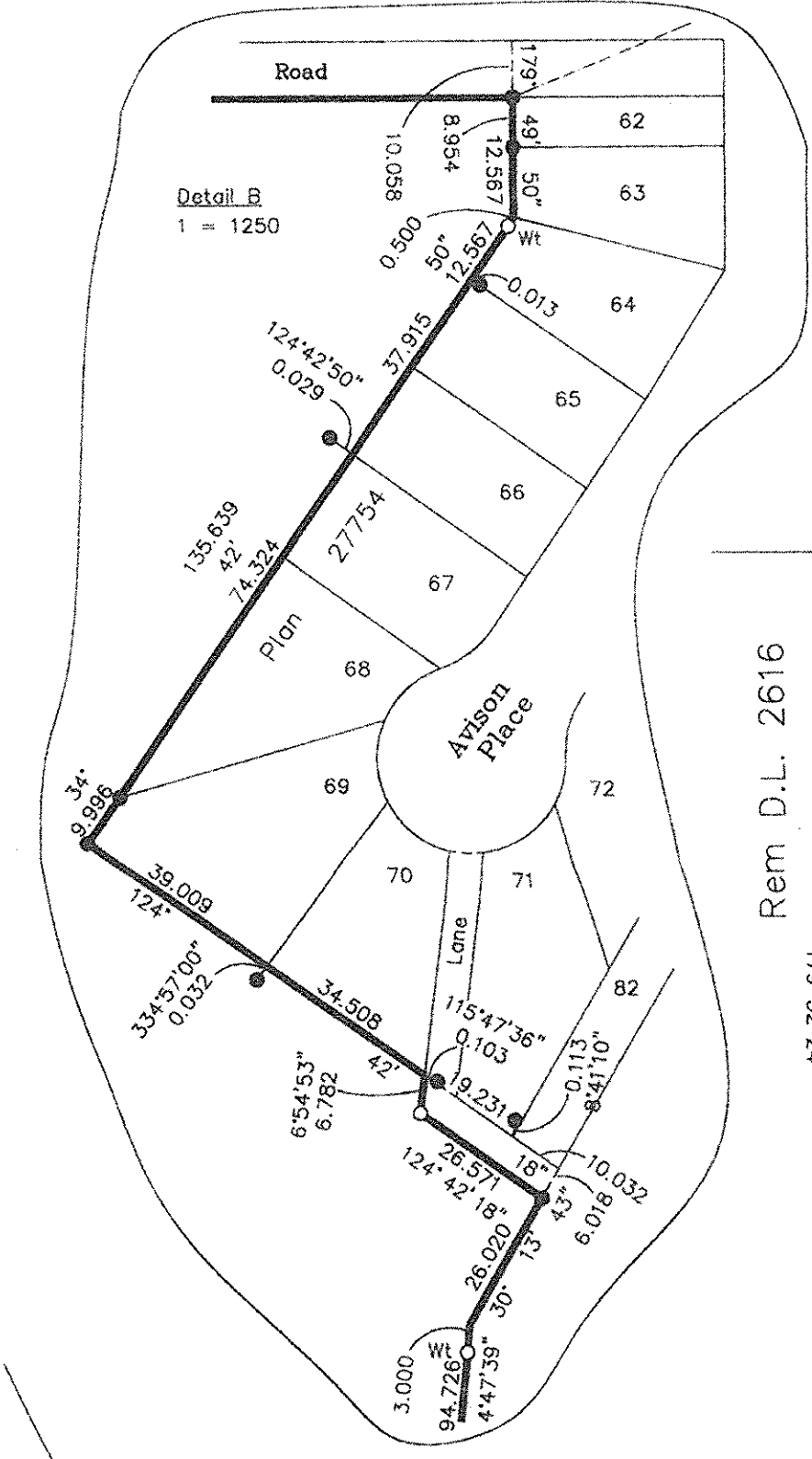
Scale: 1 : 2500 (Distances are in metres)



Grid bearings are derived from observations between
 control monuments 86H1544 and 86H1817, integrated
 survey area number 39, City of Prince George, B.C.
 NAD83(CSRS)

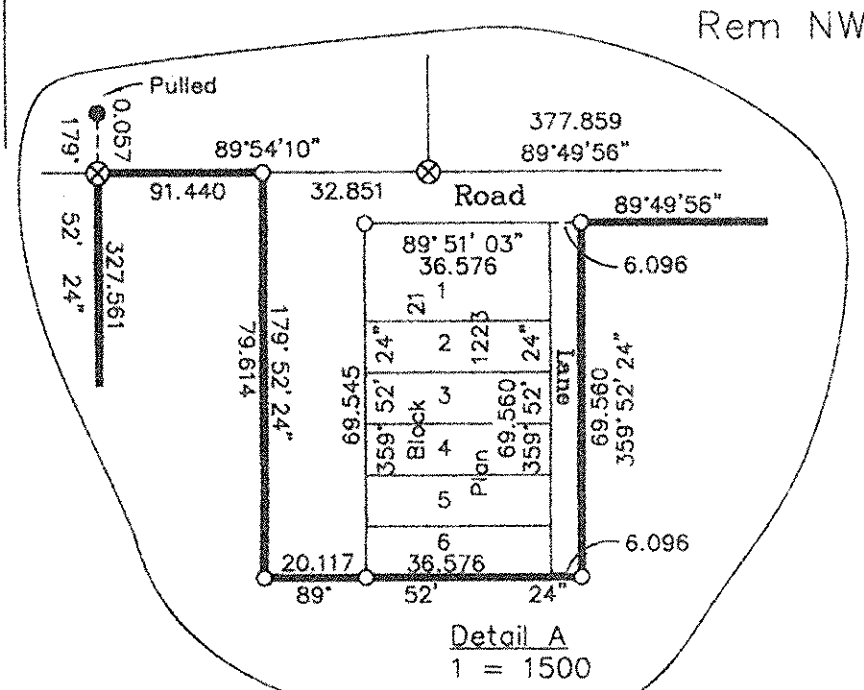
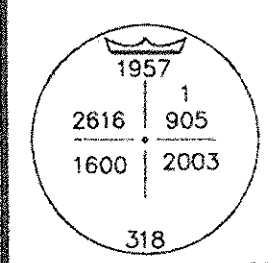
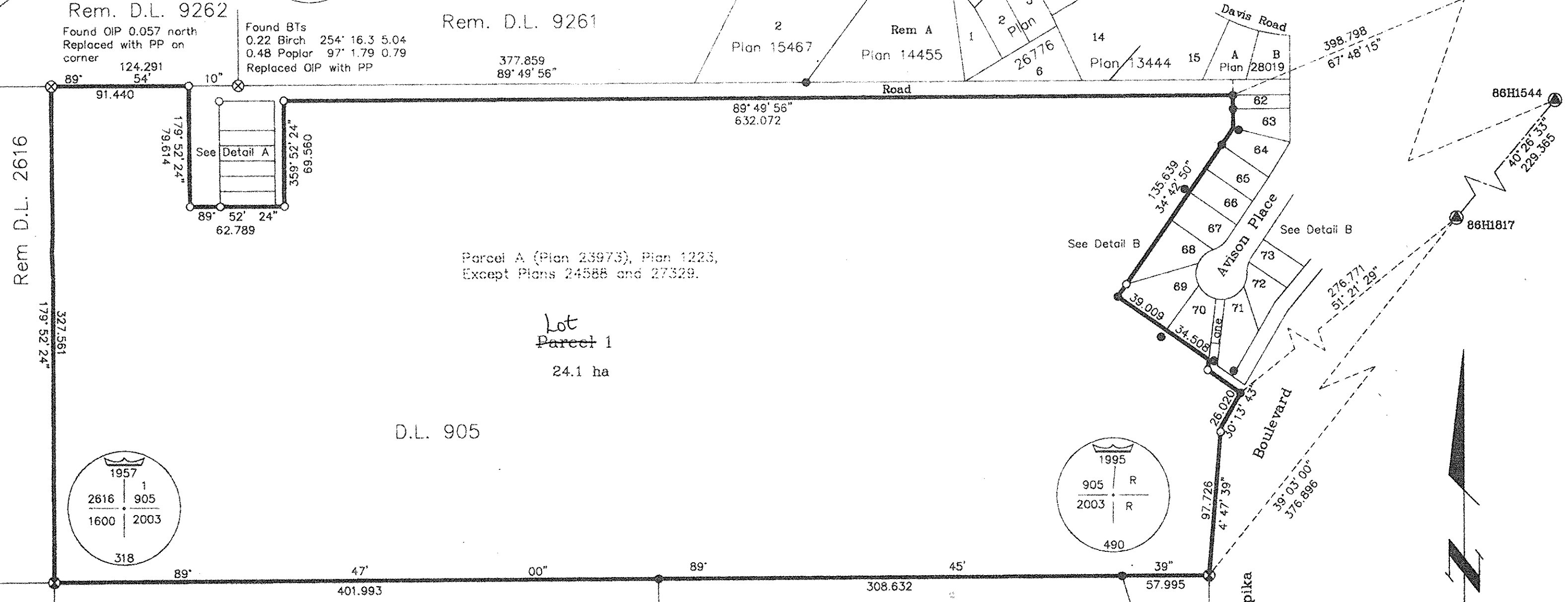
Note: This plan shows ground level measured
 distances. Prior to computation of U.T.M.
 co-ordinates multiply by the combined
 factor 0.9995022

- LEGEND**
- ⊗ Standard Capped Post Found
 - ⊗ Standard Capped Post Placed
 - Standard Iron Post Found
 - Standard Iron Post Placed
 - ⊙ Control Monument Found
- Bearings to BTs are magnetic



Rem. D.L. 9262
 Found OIP 0.057 north
 Replaced with PP on
 corner 124.291
 89° 54' 10"

Found BTs
 Replaced with PP
 0.22 Birch 254' 16.3 5.04
 0.48 Poplar 97' 1.79 0.79



I, Gordon Kilbride, a British Columbia Land Surveyor, of
 Prince George, in British Columbia, certify that I was
 present at and personally superintended the survey
 represented by this plan, and that the survey and plan
 are correct. The field survey was completed on the 11 day
 of January, 2006. The plan was completed and
 checked, and the checklist filed under #43713, on the
 27 day of January, 2006.

Gordon Kilbride
 Gordon Kilbride, B.C.L.S.

I hereby certify that this is the
 Official Plan of the lands shown
 outlined hereon.

ORIGINAL SIGNED BY
JEFF BEDDOES
 Surveyor General
 Victoria, B.C. FEB 20 2006

Tyler Boulevard
 Plan PGP3992

This plan lies within the Fraser-Fort
 George Regional District.

KILBRIDE LAND SURVEYING LTD.
 British Columbia Land Surveyors
 Prince George, B.C.
 Ph: (250) 562-1196 Fax: 562-3656

F.B.- FF4/11 | D.L.- 905 | File No. - 050513

File 0363669