

PLAN NO. BCP 22033

Deposited in the Land Title Office at New Westminster this 3 day of JAN 2006.

REGISTRAR

BA 353747

REFERENCE PLAN OF DEDICATION AS ROAD OF LOTS 13 AND 14, BLOCK 29, DISTRICT LOT 933, CARIBOO DISTRICT, PLAN 727, EXCEPT PLAN 18489.

Pursuant to Section 107 of the Land Title Act.
B.C.G.S. 93G.087

Scale: 1 : 750 (Distances are in metres)



LEGEND

- Standard Iron Post Found
- Standard Iron Post Placed
- ⊙ Control Monument Found

Grid bearings are derived from observations between control monuments 85H1317 and 85H1343, integrated survey area number 39, City of Prince George, B.C. NAD83(CSRS)

Note: This plan shows ground level measured distances. Prior to computation of U.T.M. co-ordinates multiply by the combined factor 0.9995140

This plan lies within the Fraser-Fort George Regional District.

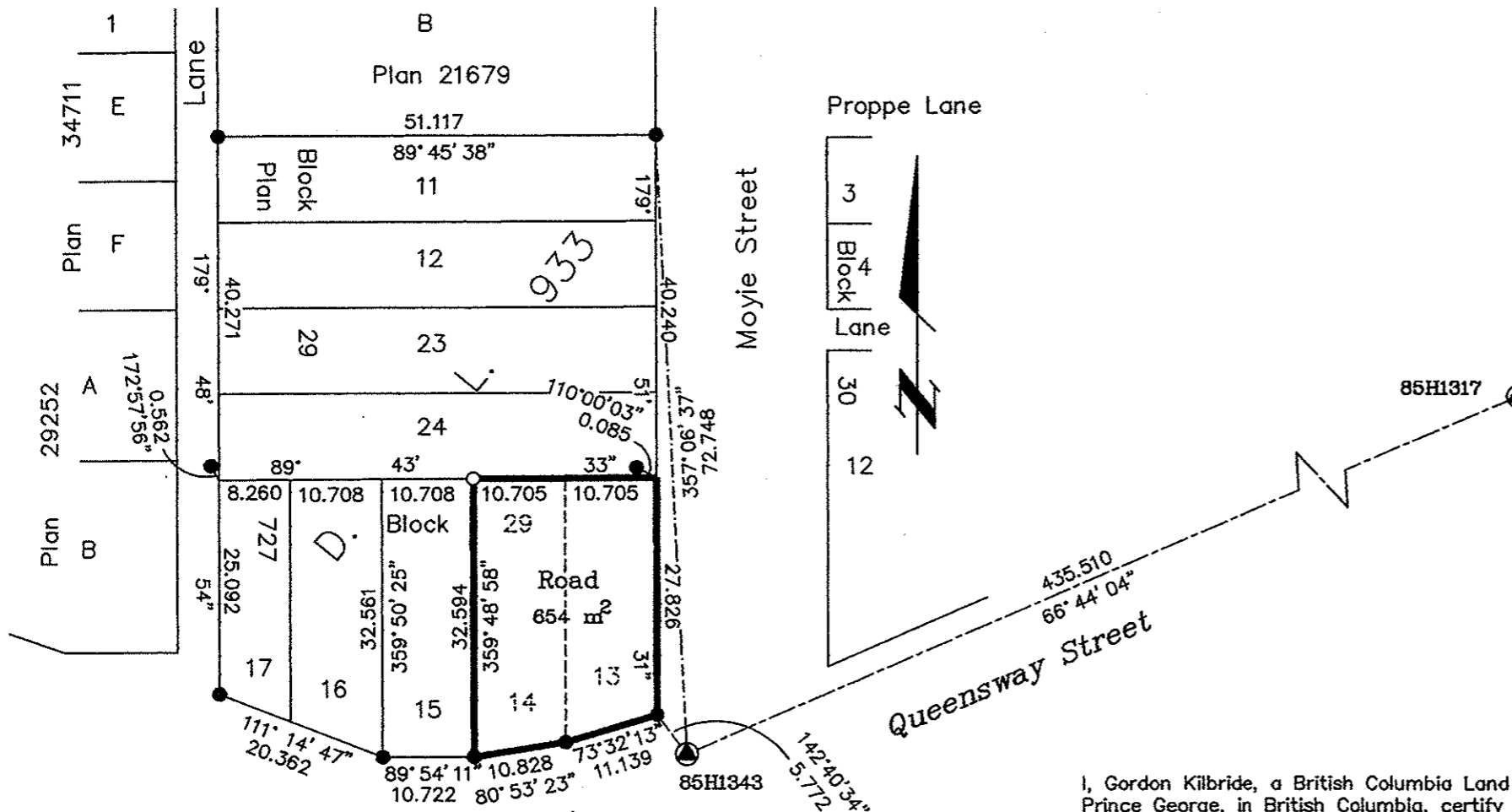
KILBRIDE LAND SURVEYING LTD.
British Columbia Land Surveyors
Prince George, B.C.

Ph: (250) 562-1196 Fax: 562-3656

F.B.- X069

D.L.- 933

File No. - 050476



I, Gordon Kilbride, a British Columbia Land Surveyor, of Prince George, in British Columbia, certify that I was present at and personally superintended the survey represented by this plan, and that the survey and plan are correct. The field survey was completed on the 25 day of November, 2005. The plan was completed and checked, and the checklist filed under #41357, on the 2nd day of December, 2005.

Gordon Kilbride
Gordon Kilbride, B.C.L.S.

Approved under the Land Title Act this 19 day of December, 2005

M. G. B.
Approving Officer
Ministry of Transportation

File No. PS701766

Owner:

John Keith Larson
John Keith Larson

Sandra Lynne Larson
Sandra Lynne Larson

G. C. Woolcott
Witness to both

GREG WOOLCOTT
Print Name

213-1011 FOURTH AVE.
Address

PRINCE GEORGE, BC V2L 3H9
Postal Code

REGISTERED PROFESSIONAL FORESTER
Occupation