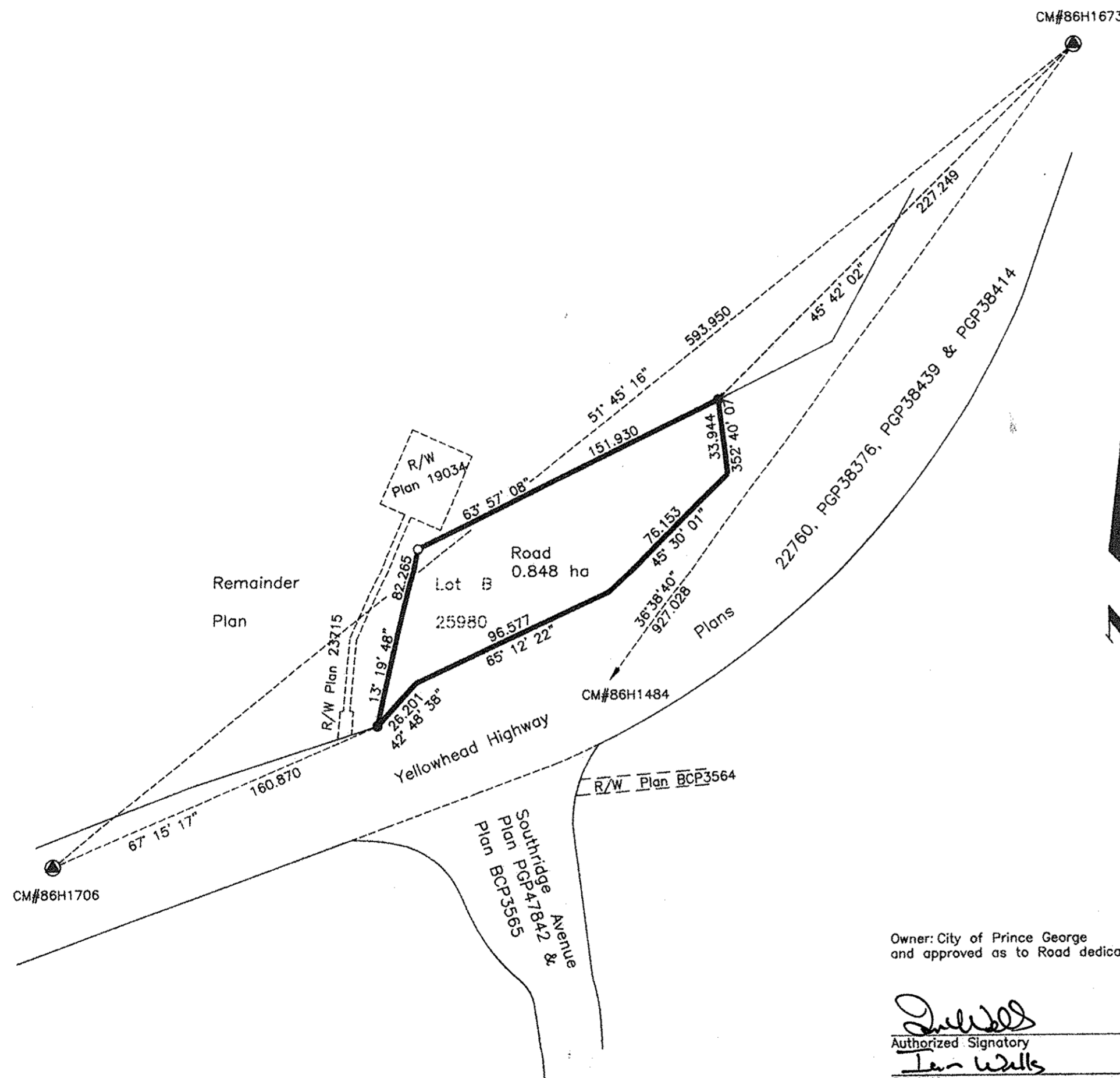


REGISTRAR



REFERENCE PLAN OF ROAD DEDICATION WITHIN LOT B, PLAN 25980, EXCEPT PLANS 28774, PGP38376 AND PGP39628, DISTRICT LOT 2003, CARIBOO DISTRICT.

PREPARED PURSUANT TO SECTION 107 OF THE LAND TITLE ACT.

B.C.G.S. 93G.097

Scale: 1 : 2000 (Distances are in metres)



LEGEND

- Standard Iron Post Found
- Standard Iron Post Placed
- ⊙ Control Monument

Grid bearings are derived from observations between control monuments 86H1484 and 86H1673, integrated survey area number 39, City of Prince George, B.C. NAD83(CSRS)

Note: This plan shows ground level measured distances. Prior to computation of U.T.M. co-ordinates multiply by the combined factor 0.9995006.

Owner: City of Prince George and approved as to Road dedication.

[Signature]
 Authorized Signatory
 Jan Wells
 Print Name

[Signature]
 Authorized Signatory
 Print Name

[Signature]
 Witness *[Signature]*
 Don Schaffer
 Print Name
 1100 Patricia Boulevard
 Address
 Prince George, BC V8N6G9
 Postal Code
 City Clerk
 Occupation

I, Gordon Kilbride, a British Columbia Land Surveyor, of Prince George, in British Columbia, certify that I was present at and personally superintended the survey represented by this plan, and that the survey and plan are correct. The survey was completed on the 13th day of March, 2003.

[Signature]
 Gordon Kilbride, B.C.L.S.

This plan lies within the Fraser-George Regional District.

KILBRIDE LAND SURVEYING LTD. British Columbia Land Surveyors Prince George, B.C. Ph: (250) 562-1196 Fax: 562-3656		
F.B.- RA	D.L.- 2003	FILE No.- 020167RD

Approved under the Land Title Act this 23 day of December, 2005.

[Signature]
 Approving Officer
 City of Prince George

Approved under the Land Title Act this 1st day of November, 2005.

[Signature]
 Approving Officer
 Ministry of Transportation