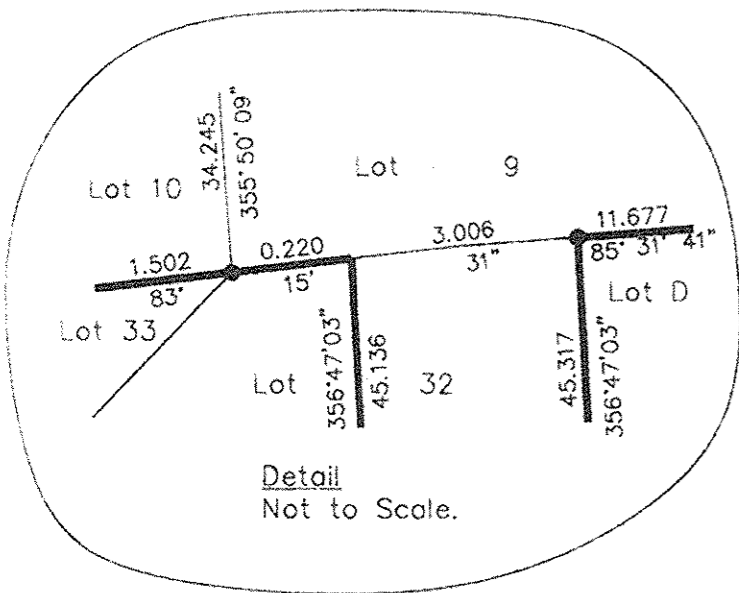
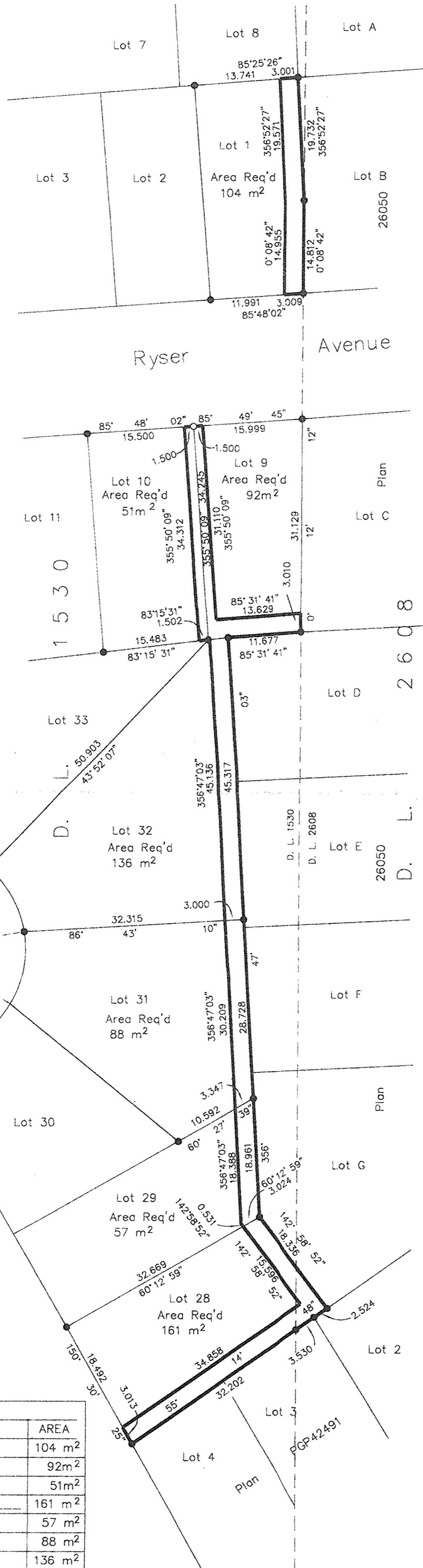


Deposited in the Land Title Office at New Westminster this day of 200

REGISTRAR



REFERENCE PLAN FOR EASEMENT OVER PART OF LOTS 1, 9, 10, 29, 31 AND 32, DISTRICT 1530 AND PART OF LOT 28, DISTRICT LOTS 1530 AND 2608 ALL OF CARIBOO DISTRICT, PLAN BCP _____.

Pursuant to Section 99 of the Land Title Act.

B.C.G.S. 93G.096

Scale: 1 : 500 (Distances are in metres)



Bearings are astronomic, derived from Plan BCP _____.

LEGEND

- Standard iron Post Found

I, Dale Keown, a British Columbia Land Surveyor, of Prince George, in British Columbia, certify that I was present at and personally superintended the survey represented by this plan, and that the survey and plan are correct. The field survey was completed on the 26th day of October, 2005. The plan was completed and checked, and the checklist filed under # 36644, on the 1st day of September, 2005.

Dale Keown
Dale Keown, B.C.L.S.

DESCRIPTION	AREA
Lot 1, D.L. 1530, Cariboo District, Plan BCP _____	104 m ²
Lot 9, D.L. 1530, Cariboo District, Plan BCP _____	92 m ²
Lot 10, D.L. 1530, Cariboo District, Plan BCP _____	51 m ²
Lot 28, D.L. 1530 & 2608, Cariboo District, Plan BCP _____	161 m ²
Lot 29, D.L. 1530, Cariboo District, Plan BCP _____	57 m ²
Lot 31, D.L. 1530, Cariboo District, Plan BCP _____	88 m ²
Lot 32, D.L. 1530, Cariboo District, Plan BCP _____	136 m ²

This plan lies within the Fraser-Fort George Regional District.

KILBRIDE LAND SURVEYING LTD. British Columbia Land Surveyors Prince George, B.C. Ph: (250) 562-1196 Fax: 562-3656		
F.B.- XH25	D.L.- 1530	File No. - 050247E