

REFERENCE PLAN OF
 CONSOLIDATION OF LOTS 23,
 24 AND ASSIGNED LOT A
 (53178M), BLOCK 67,
 DISTRICT LOT 937, CARIBOO
 DISTRICT, PLAN 752.

PLAN NO. BCP 21230

Deposited in the Land Title Office at New
 Westminster this 6 day of Dec 2005.

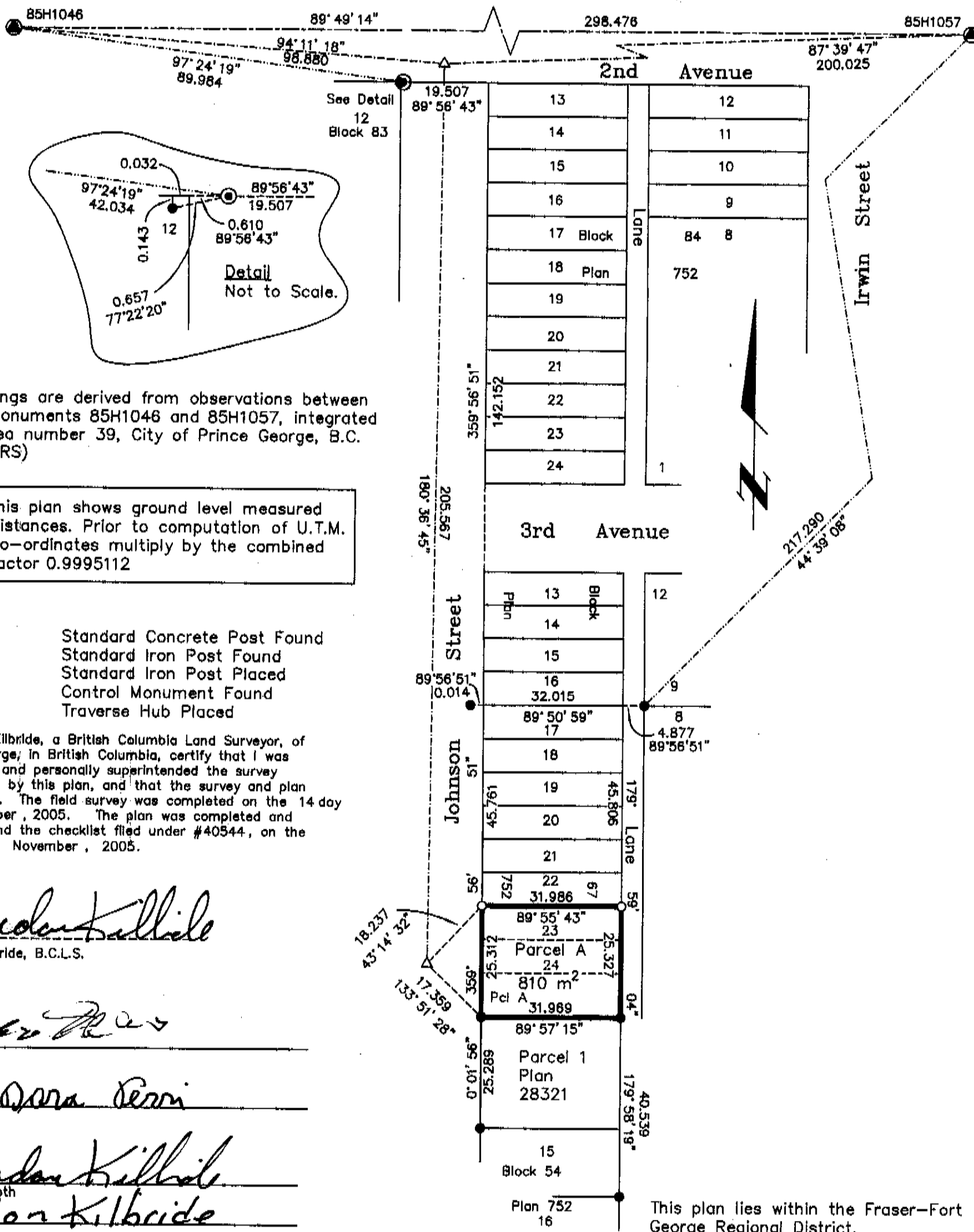
Pursuant to Section 100
 of the Land Title Act.

B.C.G.S. 93G.097

Scale: 1 : 1000 (Distances are in metres)

REGISTRAR

BY 21/6/07



Grid bearings are derived from observations between control monuments 85H1046 and 85H1057, integrated survey area number 39, City of Prince George, B.C. NAD83(CSRS)

Note: This plan shows ground level measured distances. Prior to computation of U.T.M. co-ordinates multiply by the combined factor 0.9995112

LEGEND

- ⊙ Standard Concrete Post Found
- Standard Iron Post Found
- Standard Iron Post Placed
- ⊕ Control Monument Found
- △ Traverse Hub Placed

I, Gordon Kilbride, a British Columbia Land Surveyor, of Prince George, in British Columbia, certify that I was present at and personally superintended the survey represented by this plan, and that the survey and plan are correct. The field survey was completed on the 14 day of November, 2005. The plan was completed and checked, and the checklist filed under #40544, on the 18 day of November, 2005.

Gordon Kilbride
 Gordon Kilbride, B.C.L.S.

Owner:

Giulio Perri
 Giulio Perri

Dora Perri
 Dora Perri

Gordon Kilbride
 Witness to both

Gordon Kilbride
 Print Name

185 Quebec St
 Address

Prince George B.C. V2L 1W1W
 Postal Code

BC Land Surveyor
 Occupation

This plan lies within the Fraser-Fort George Regional District.

KILBRIDE LAND SURVEYING LTD.
 British Columbia Land Surveyors
 Prince George, B.C.
 Ph: (250) 562-1196 Fax: 562-3656

F.B.- XN29 D.L.- 937 File No. -050477