

REFERENCE PLAN OF STATUTORY RIGHT OF WAY ON PART OF LOT 18, DISTRICT LOT 2003, CARIBOO DISTRICT, PLAN 28774. Pursuant to Section 113 of the Land Title Act. B.C.G.S. 93G.096

REGISTRAR

REF.# BX 293929

Scale: 1 : 500 (Distances are in metres)

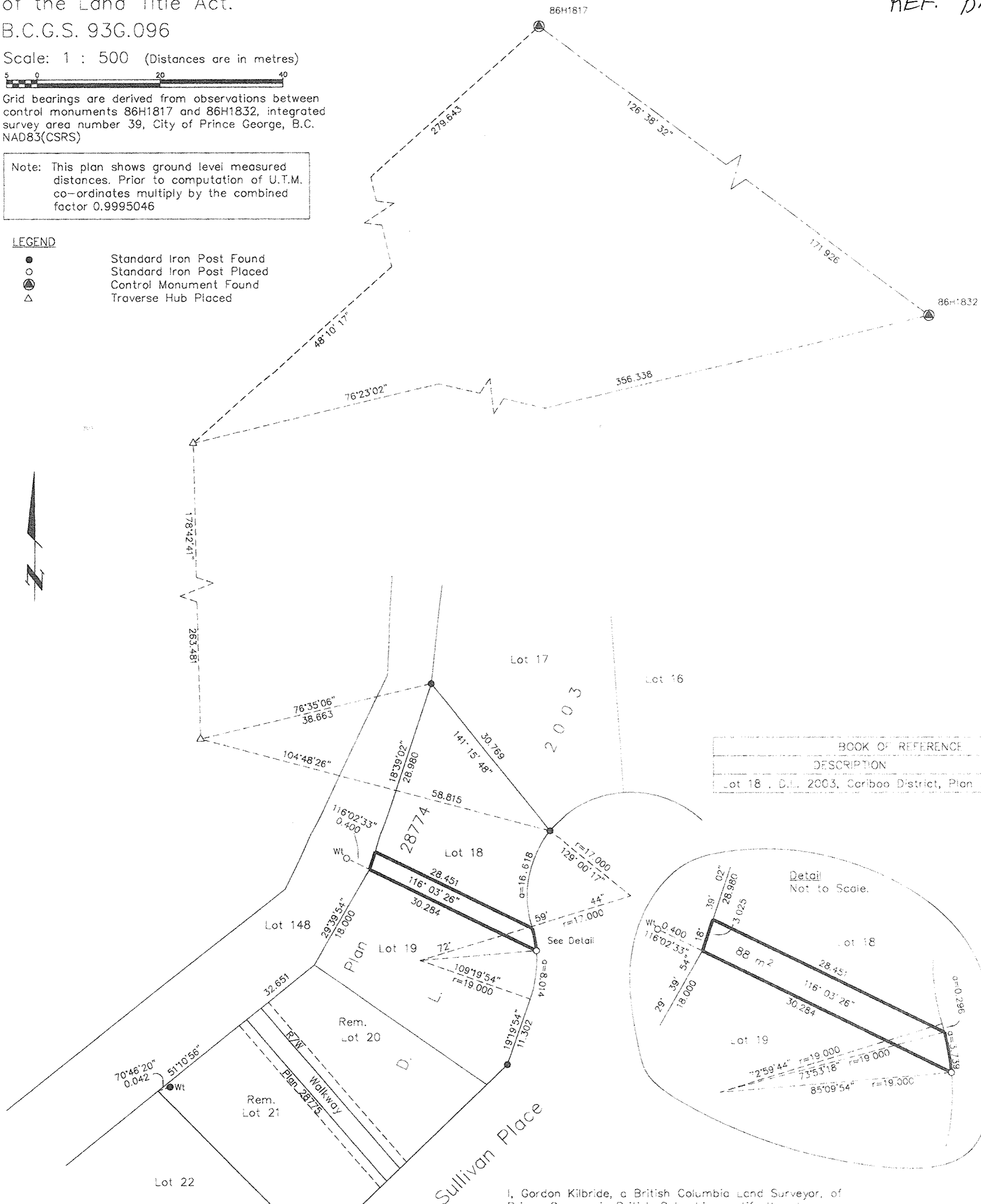


Grid bearings are derived from observations between control monuments 86H1817 and 86H1832, integrated survey area number 39, City of Prince George, B.C. NAD83(CSRS)

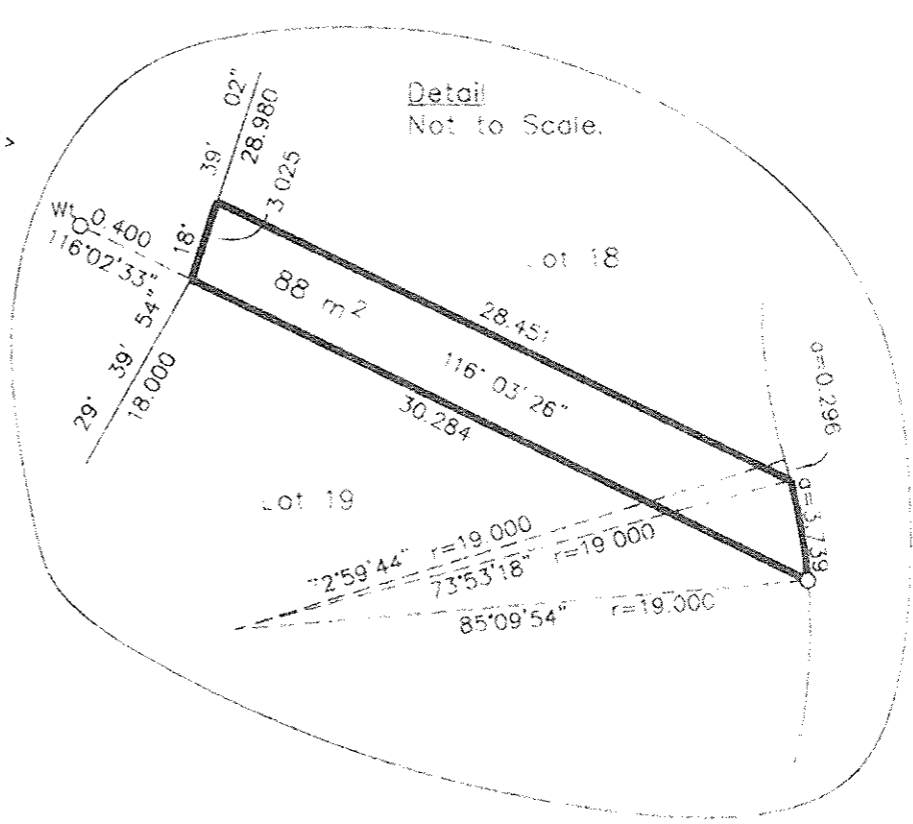
Note: This plan shows ground level measured distances. Prior to computation of U.T.M. co-ordinates multiply by the combined factor 0.9995046

LEGEND

- Standard Iron Post Found
- Standard Iron Post Placed
- ⊙ Control Monument Found
- △ Traverse Hub Placed



BOOK OF REFERENCE	
DESCRIPTION	AREA
Lot 18 - D.L. 2003, Cariboo District, Plan 28774	88 m ²



I, Gordon Kilbride, a British Columbia Land Surveyor, of Prince George, in British Columbia, certify that I was present at and personally supervised the survey represented by this plan, and that the survey and plan are correct. The field survey was completed on the 2 day of November, 2005. The plan was completed and checked, and the checklist filed under #40344, on the 15 day of November, 2005.

Gordon Kilbride
Gordon Kilbride, B.C.L.S.

This plan lies within the Fraser-Fort George Regional District.

KILBRIDE LAND SURVEYING LTD.
British Columbia Land Surveyors
Prince George, B.C.
Ph: (250) 562-1196 Fax: 562-3656