

SUBDIVISION PLAN OF PART OF BLOCK A,  
EXCEPT PLANS PGP43880, PGP43968 AND  
BCP18897, DISTRICT LOTS 4041, 4377 AND  
7644, CARIBOO DISTRICT.  
B.C.G.S. 93G.097

Scale: 1 : 2500 (Distances are in metres)



PLAN NO. BCP 20570.

Deposited in the Land Title Office at New  
Westminster this 28 day of Oct 2005.

REGISTRAR

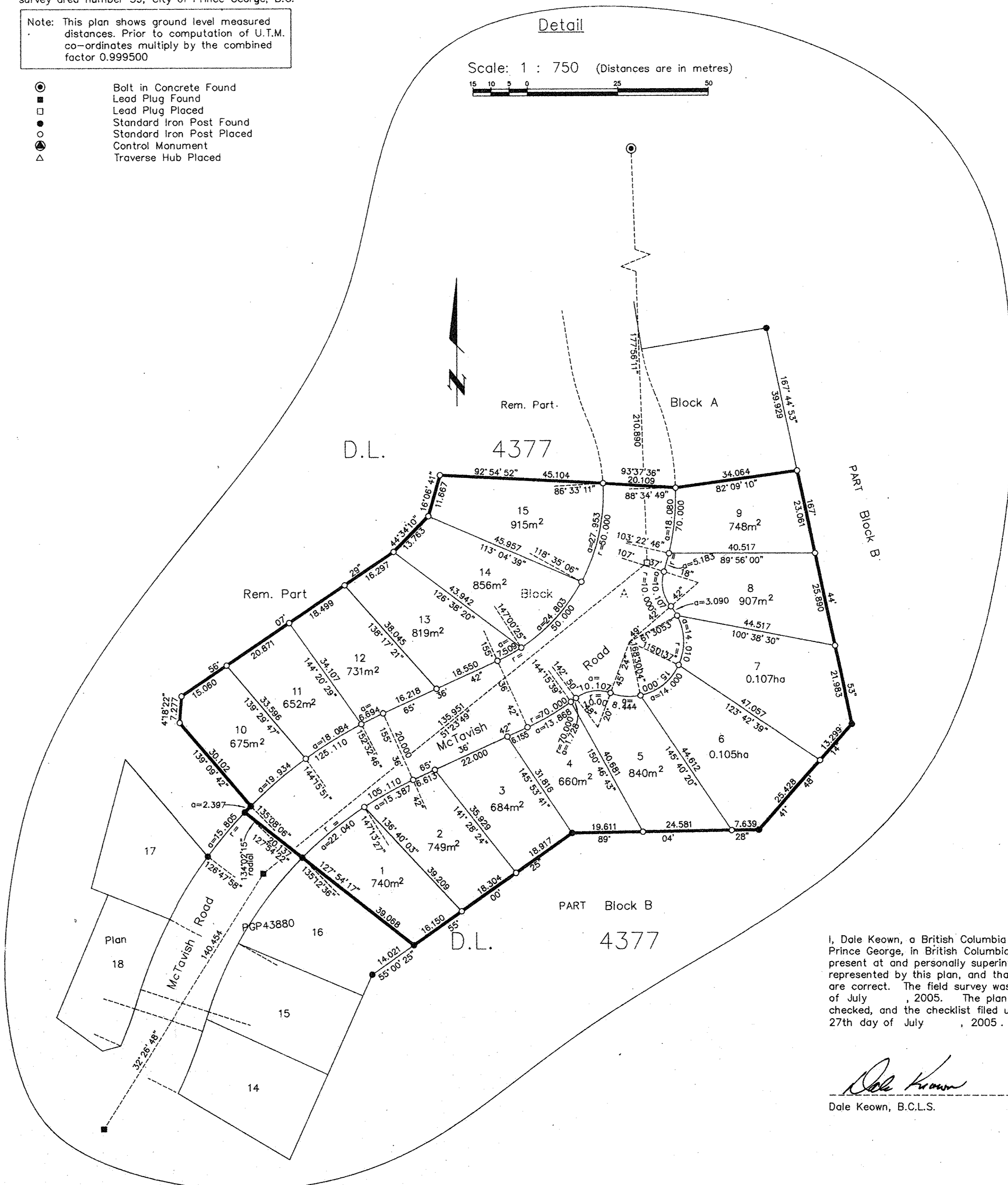
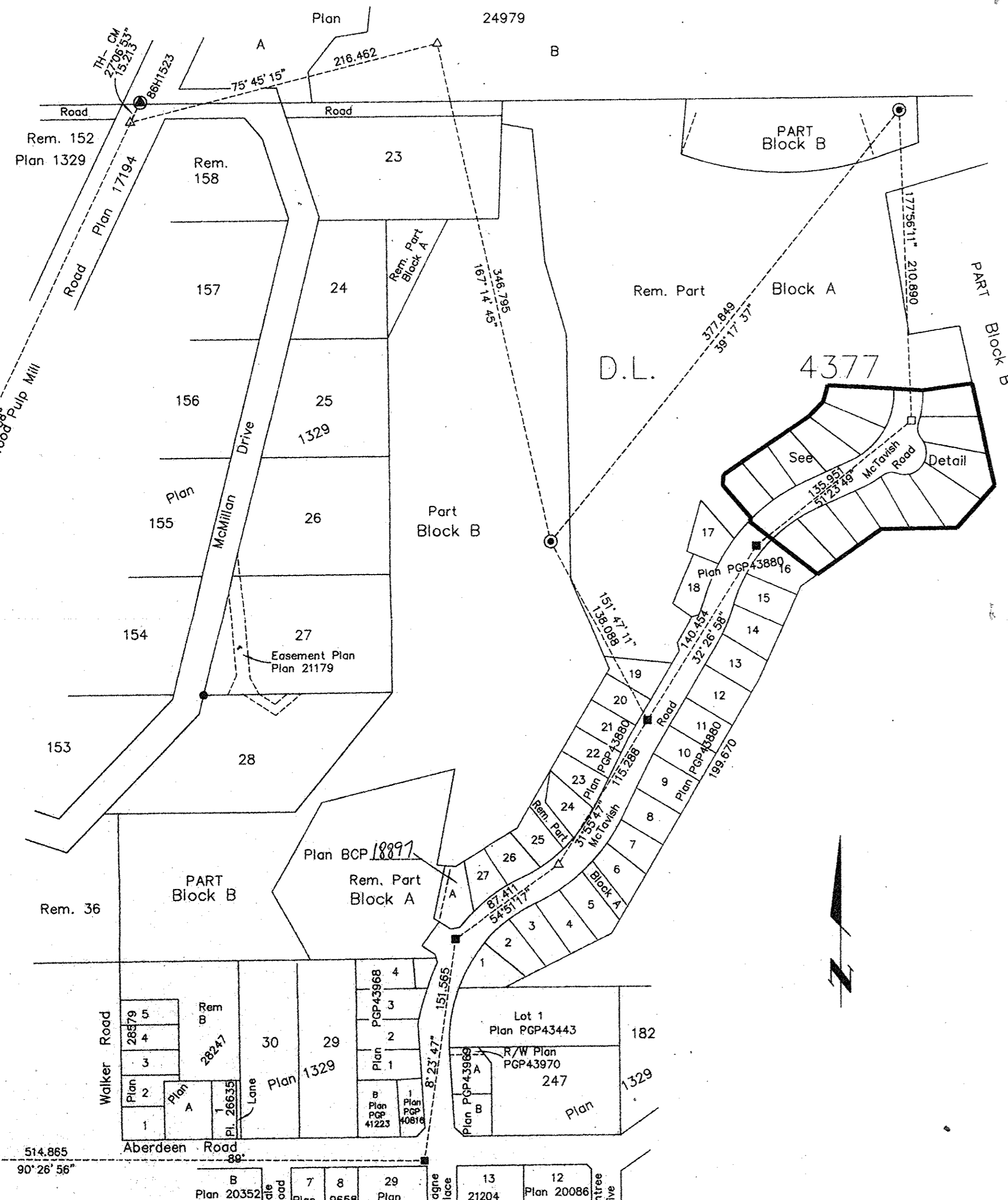
Bx 499633

LEGEND

Grid bearings are derived from observations between  
control monuments 86H1523 and 86H1553, integrated  
survey area number 39, City of Prince George, B.C.

Note: This plan shows ground level measured  
distances. Prior to computation of U.T.M.  
co-ordinates multiply by the combined  
factor 0.999500

- Bolt in Concrete Found
- Lead Plug Found
- Lead Plug Placed
- Standard Iron Post Found
- Standard Iron Post Placed
- △ Control Monument
- △ Traverse Hub Placed



Scale: 1 : 750 (Distances are in metres)



I, Dale Keown, a British Columbia Land Surveyor, of  
Prince George, in British Columbia, certify that I was  
present at and personally superintended the survey  
represented by this plan, and that the survey and plan  
are correct. The field survey was completed on the 27th day  
of July, 2005. The plan was completed and  
checked, and the checklist filed under #34937, on the  
27th day of July, 2005.

*Dale Keown*  
Dale Keown, B.C.L.S.

Owner: Aberdeen Glen Developments Ltd.  
Inc. No. 487368  
Authorized Signatory:  
*Craig Church*  
Print Name: *Craig Church*  
Witness:  
*Dale Keown*  
Print Name: Dale Keown  
Address: 96 105 Quebec Street  
Prince George, B.C. V2L 1W1  
Postal Code: B.C. Land Surveyor  
Occupation:

Approved under the Land Title Act this 25 day of  
October, 2005.  
*[Signature]*  
Approving Officer  
City of Prince George

This plan lies within the Fraser-Fort  
George Regional District.  
KILBRIDE LAND SURVEYING LTD.  
British Columbia Land Surveyors  
Prince George, B.C.  
Ph: (250) 562-1196 Fax: 562-3656  
F.B.- RA | D.L.- 4377 | File No. -040167S