

REFERENCE PLAN OF EASEMENT
OVER PART OF LOTS C, D AND E,
DISTRICT LOTS 1599 AND 1605,
PLAN BCP 20479. AND PART OF PARCEL H
(J7605), BLOCK 8, DISTRICT LOT 1605,
PLAN 1065, CARIBOO DISTRICT.

PLAN NO. BCP 20481

Deposited in the Land Title Office at New
Westminster this 24th day of October 2005.

REGISTRAR

BX 60987

Pursuant to Section 99
of the Land Title Act.
B.C.G.S. 93G.086

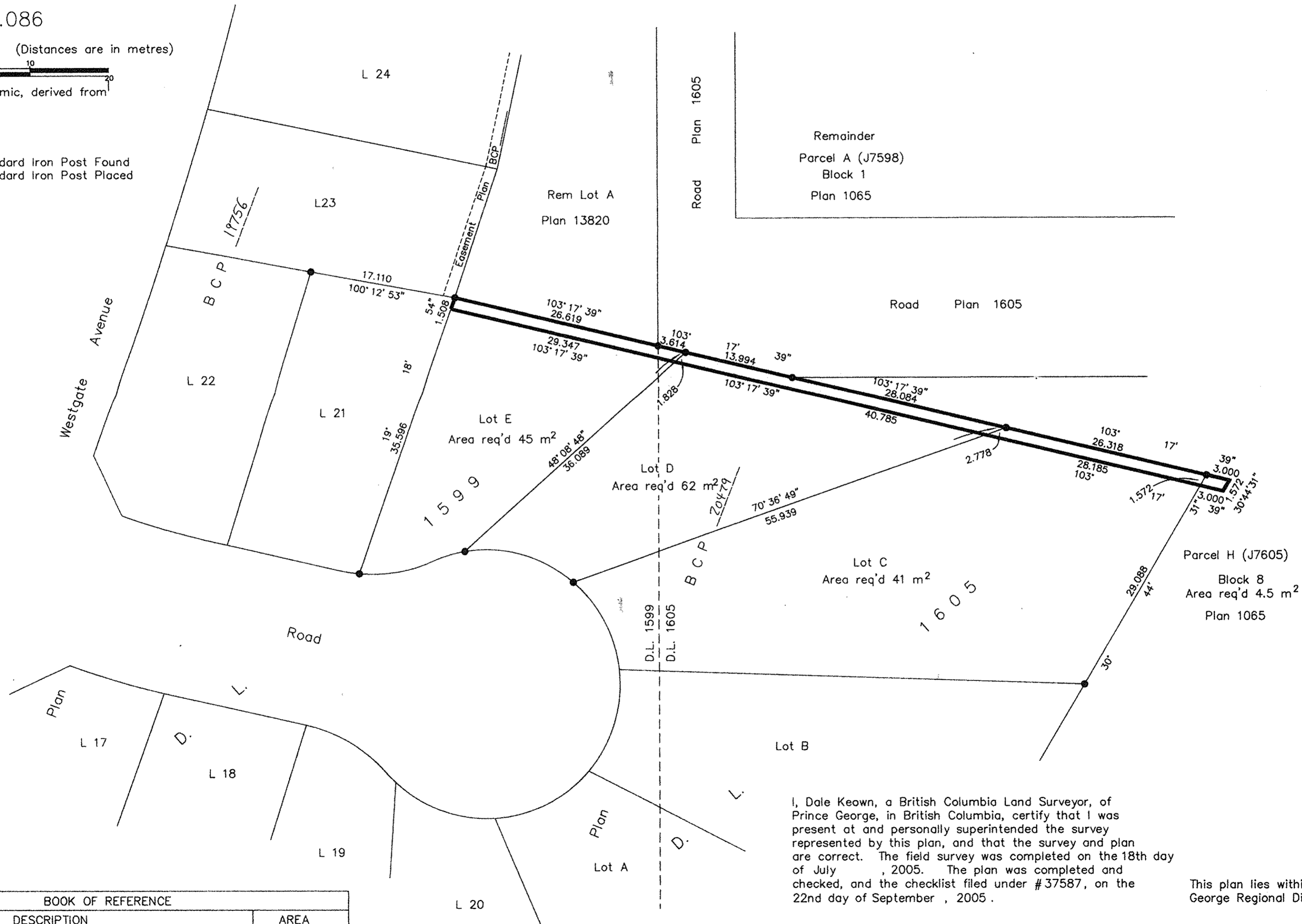
Scale: 1 : 400 (Distances are in metres)



Bearings are astronomic, derived from
Plan BCP 20479.

LEGEND

- Standard Iron Post Found
- Standard Iron Post Placed



I, Dale Keown, a British Columbia Land Surveyor, of
Prince George, in British Columbia, certify that I was
present at and personally supervised the survey
represented by this plan, and that the survey and plan
are correct. The field survey was completed on the 18th day
of July, 2005. The plan was completed and
checked, and the checklist filed under #37587, on the
22nd day of September, 2005.

This plan lies within the Fraser-Fort
George Regional District.

BOOK OF REFERENCE	
DESCRIPTION	AREA
Lot C, DL's 1599 & 1605, Cariboo District, Plan BCP 20479	41 m ²
Lot D, DL's 1599 & 1605, Cariboo District, Plan BCP 20479	62 m ²
Lot E, DL's 1599 & 1605, Cariboo District, Plan BCP 20479	45 m ²
Lot H (J7605), Blk 8, DL 1605, Cariboo District, Plan 1065	4.5 m ²

Dale Keown

Dale Keown, B.C.L.S.

KILBRIDE LAND SURVEYING LTD.
British Columbia Land Surveyors
Prince George, B.C.

Ph: (250) 562-1196 Fax: 562-3656

F.B.- HH3-24 D.L.- 1599 File No. - 050232E