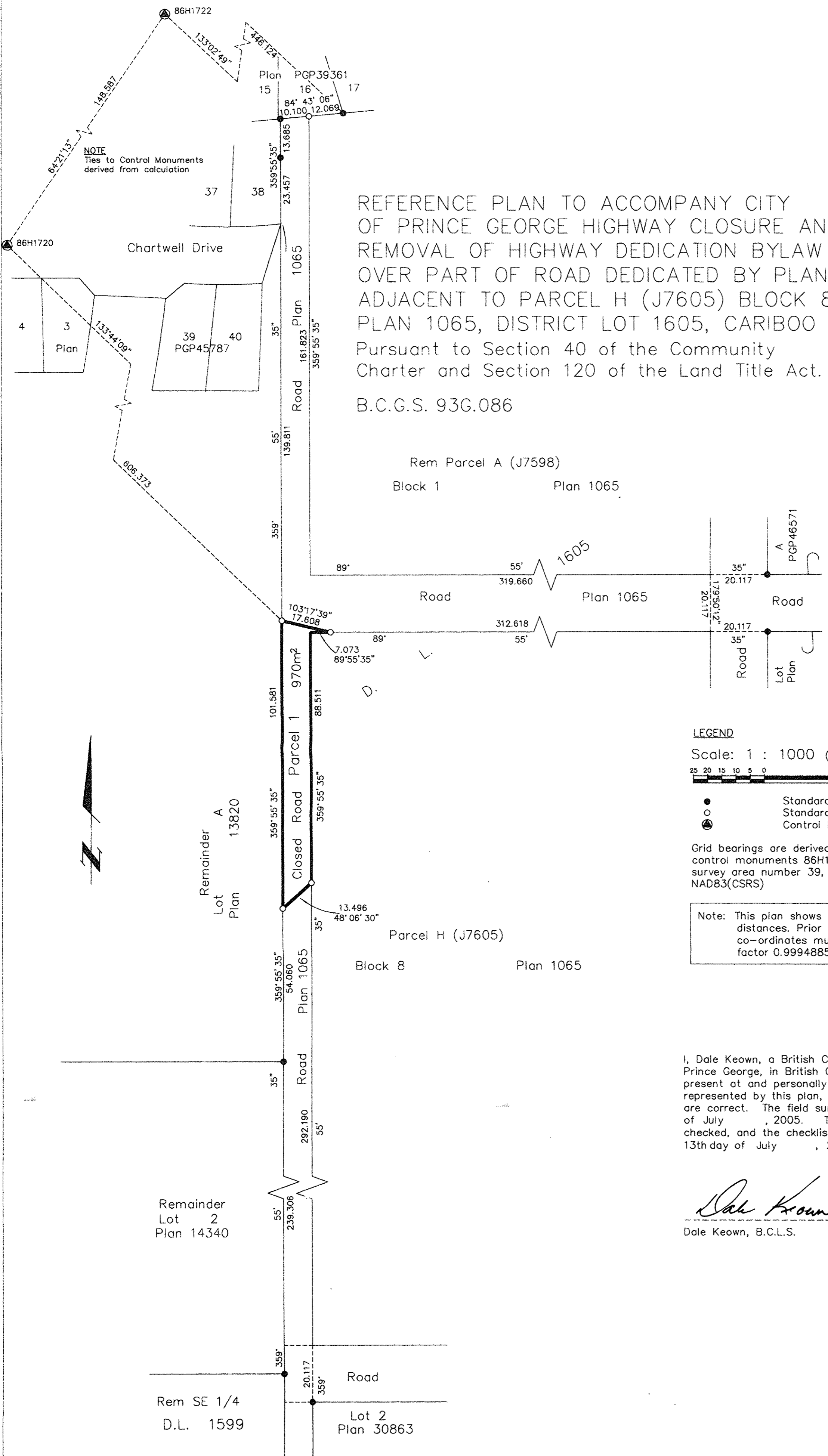


Deposited in the Land Title Office at New Westminster this 24<sup>th</sup> day of October 2005.

REGISTRAR

Bx 60975

REFERENCE PLAN TO ACCOMPANY CITY OF PRINCE GEORGE HIGHWAY CLOSURE AND REMOVAL OF HIGHWAY DEDICATION BYLAW 7772, OVER PART OF ROAD DEDICATED BY PLAN 1065 ADJACENT TO PARCEL H (J7605) BLOCK 8, PLAN 1065, DISTRICT LOT 1605, CARIBOO DISTRICT. Pursuant to Section 40 of the Community Charter and Section 120 of the Land Title Act. B.C.G.S. 93G.086



LEGEND

Scale: 1 : 1000 (Distances are in metres)

- Standard Iron Post Found
- Standard Iron Post Placed
- ⊙ Control Monument Found

Grid bearings are derived from observations between control monuments 86H1720 and 86H1722, integrated survey area number 39, City of Prince George, B.C. NAD83(CSRS)

Note: This plan shows ground level measured distances. Prior to computation of U.T.M. co-ordinates multiply by the combined factor 0.9994885

I, Dale Keown, a British Columbia Land Surveyor, of Prince George, in British Columbia, certify that I was present at and personally superintended the survey represented by this plan, and that the survey and plan are correct. The field survey was completed on the 13th day of July, 2005. The plan was completed and checked, and the checklist filed under #34115, on the 13th day of July, 2005.

*Dale Keown*

Dale Keown, B.C.L.S.

This plan lies within the Fraser-Fort George Regional District.

**KILBRIDE LAND SURVEYING LTD.**  
British Columbia Land Surveyors  
Prince George, B.C.  
Ph: (250) 562-1196 Fax: 562-3656

F.B.- HH3-24 D.L.- 1605 File No. - 050232BL