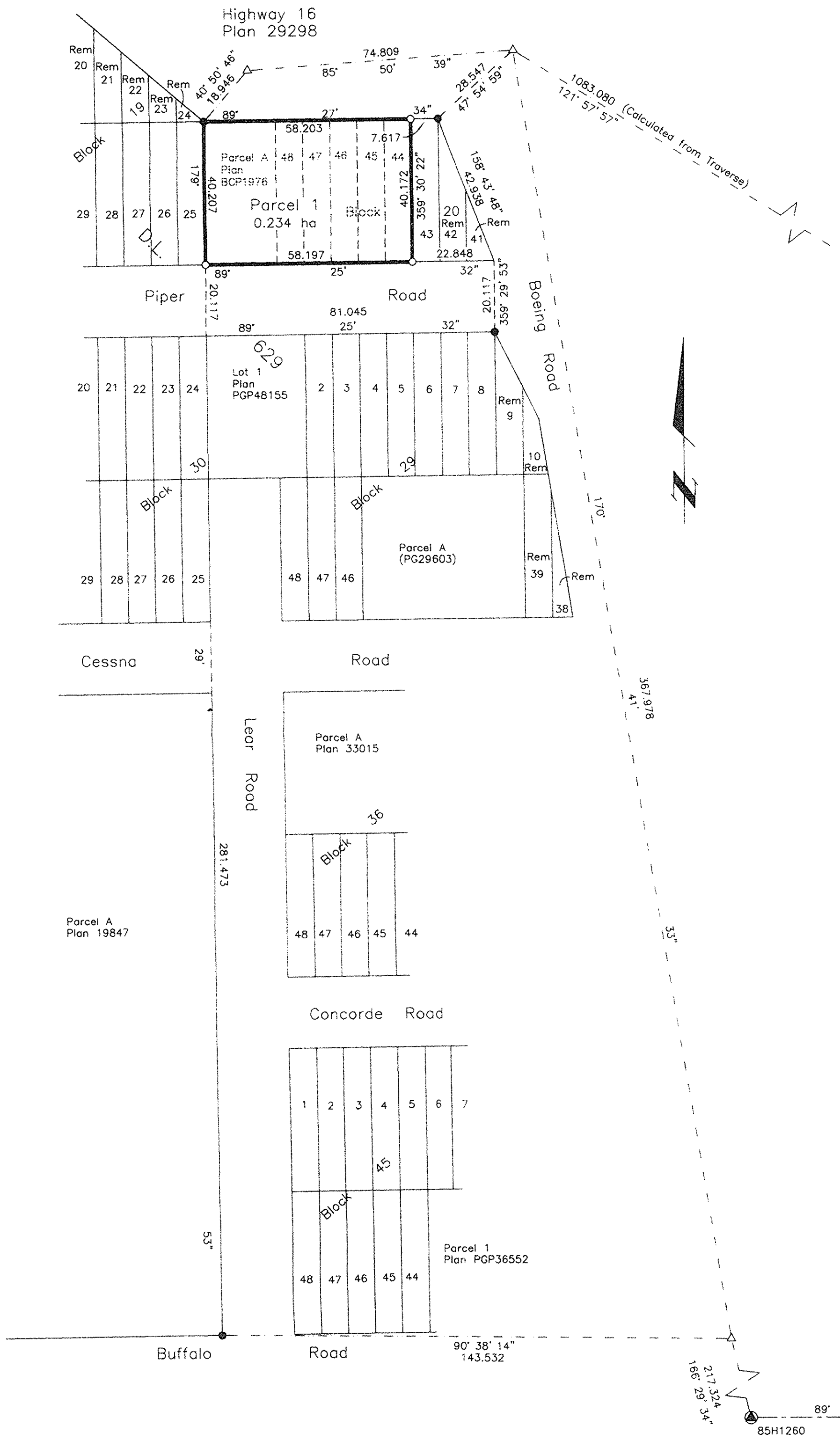


REGISTRAR

REF. # Bx 380425



REFERENCE PLAN OF CONSOLIDATION OF PARCEL A, PLAN BCP1976 AND LOTS 44 TO 48, BLOCK 20, PLAN 902, DISTRICT LOT 629, CARIBOO DISTRICT. Pursuant to Section 100(1)(b) of the Land Title Act. B.C.G.S. 93G.097

Scale: 1 : 1000 (Distances are in metres)

Grid bearings are derived from observations between control monuments 85H1260 and 85H1257, integrated survey area number 39, City of Prince George, B.C. NAD83(CSRS)

Note: This plan shows ground level measured distances. Prior to computation of U.T.M. co-ordinates multiply by the combined factor 0.9995004

LEGEND

- Standard iron Post Found
- Standard iron Post Placed
- ⊙ Control Monument Found
- △ Traverse Hub Placed

I, Gordon Kilbride, a British Columbia Land Surveyor, of Prince George, in British Columbia, certify that I was present at and personally supervised the survey represented by this plan, and that the survey and plan are correct. The field survey was completed on the 2 day of July, 2003. The plan was completed and checked, and the checklist filed under # 3007, on the 7 day of July, 2003.

Gordon Kilbride
Gordon Kilbride, B.C.L.S.

Owner:

J. Ploeger
Jurjen Ploeger
E. Ploeger
Evelyn Violet Ploeger

Barbara Sieben
Witness (to joint)
Print Name: Barbara Sieben
Address: 1100 Patricia Blvd.
Prince George, BC V2L 3V9
Postal Code
Occupation: Property Administrator

This plan lies within the Fraser-Fort George Regional District.

KILBRIDE LAND SURVEYING LTD. British Columbia Land Surveyors Prince George, B.C. Ph: (250) 562-1196 Fax: 562-3656		
F.B.- WS65	D.L.- 629	File No. - 020126C