

Deposited in the Land Title Office at New Westminster this 30 day of SEPT. 2005.

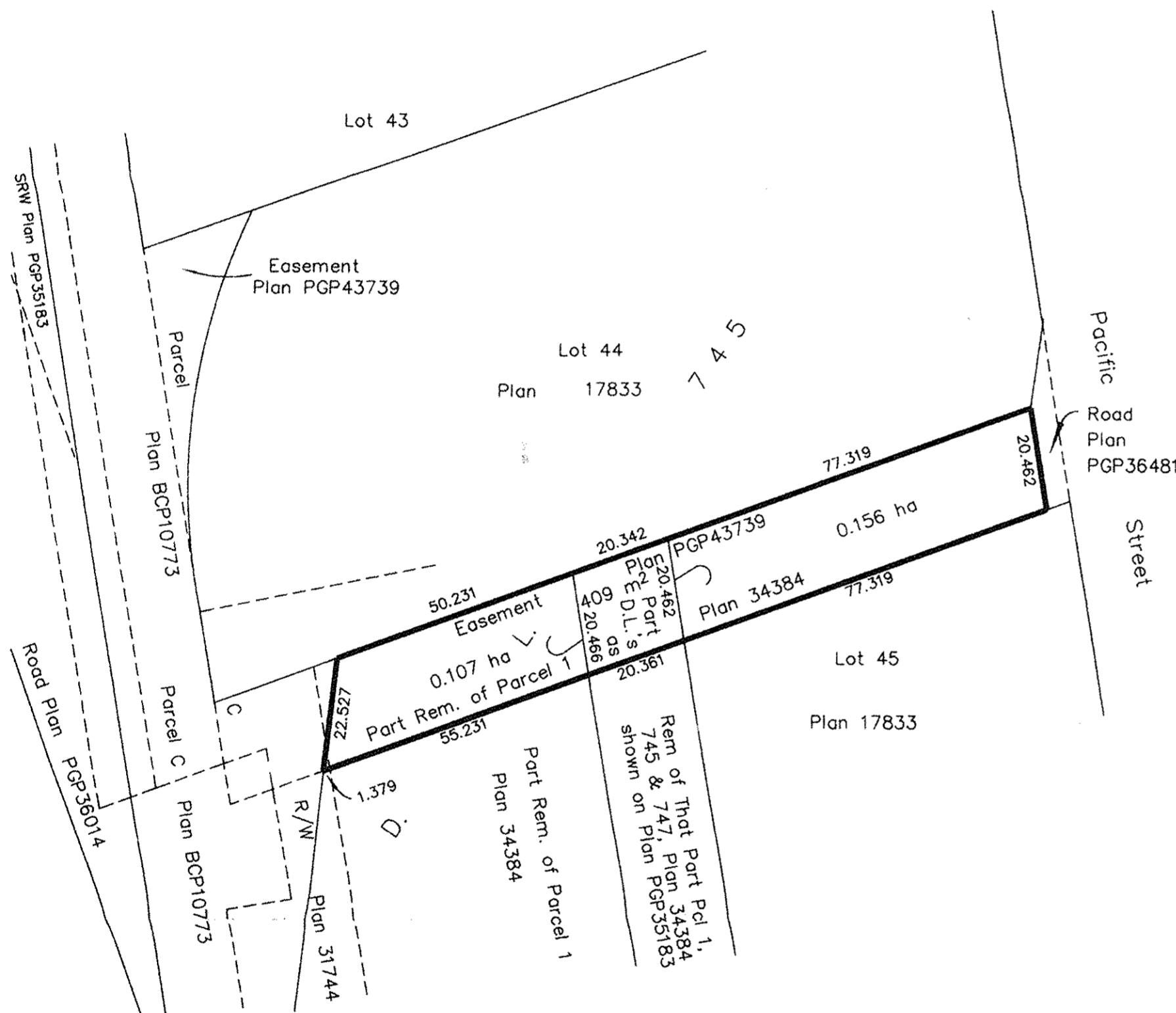
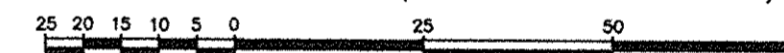
REGISTRAR

REF. # BX 48976

EXPLANATORY PLAN FOR EASEMENT OF PART OF PARCEL 1, DISTRICT LOTS 745 AND 747, CARIBOO DISTRICT, PLAN 34384, EXCEPT PLANS PGP35183, PGP36014, PGP36015, PGP36075, PGP36481, PGP42972, PGP44172 AND PGP45387 AND PART OF THAT PART OF PARCEL 1, DISTRICT LOTS 745 AND 747, CARIBOO DISTRICT, PLAN 34384 AS SHOWN ON PLAN PGP35183, EXCEPT PLANS PGP36014, PGP36015 AND BCP10773.

Pursuant to Section 99 of the Land Title Act. B.C.G.S. 93G.087

Scale: 1 : 1000 (Distances are in metres)



BOOK OF REFERENCE	
DESCRIPTION	AREA
Pcl 1, DL's 745 & 747, Cariboo District, Plan 34384, except Plans PGP35183, PGP36014, PGP36015, PGP3481, PGP42972, PGP44172, PGP45387, PGP36075	0.263 ha
That Part of Pcl 1, DL's 745 & 747, Cariboo District, Plan 34384 as shown on Plan PGP35183, except Plans PGP36014, PGP36015 & BCP10773.	409 m ²

Certified Correct, according to Land Title Office Records. This 26th day of September, 2005. The plan was completed and checked, and the checklist filed under #37832, on the 27th day of September, 2005.

Dale Keown
Dale Keown, B.C.L.S.

This plan lies within the Fraser-Fort George Regional District.

KILBRIDE LAND SURVEYING LTD. British Columbia Land Surveyors Prince George, B.C. Ph: (250) 562-1196 Fax: 562-3656		
F.B.-	D.L.- 745	File No. - 050394